



Facilities & Services

**TRANSPORTATION CLOSURE FORM**

(Streets, Sidewalks, Bike Paths & Bike Parking)

Date Submitted: 11/8/24

Street(s), Sidewalks, Bike Path or Parking to be Closed: Sidewalk segments west of Illini Union North Building, as illustrated in attachment

Intersecting Streets which are affected or define limits of closure: N/A

Reason for Closure: loading material for setting scaffolding

Project On-Site Contact Person: Mike Wise
U of I Project Manager (PM): Mark Roessler

Phone Number: 217-722-2952
U of I PM Phone Number: 217-333-2814

Date of Closure: 11/14/24

Expected Time of Closure: 6:30AM

Date of Re-opening: 9/11/26

Expected Time of Re-opening: 5:00 PM

Work Order No. (if used):

CDB Contract No.:

Is Traffic re-routing necessary? Pedestrian only

If so, who should be involved? Illini Union Personnel

Will Pedestrian/bicycle traffic be affected? Yes, only pedestrian

If so, will the sidewalk be closed? Yes

Will ADA audible/visual warnings and barriers be provided? No

Will pedestrian traffic be routed safely? Yes

Are additional safety precautions needed? Refer to attached logistics plan.

Please provide a diagram noting signage, re-routing, safety features, etc. with related explanations. Diagram required.

Yes No

Is barricading required? If so, indicate the barricade locations on the diagram.

Will Facility & Services staff place the barricades?
If the barricades will be placed by others, give the name of person responsible and the telephone number: Mike Wise 217.722.2952

Will police be necessary to direct the traffic? If so, name jurisdiction times, dates and location of each officer needed:

Will this street closure affect University of Illinois parking meters on the street or in the parking lots in this area?
If so, you MUST contact the Parking Department at 333-3530 as there may be a fee assessed.

Will MTD, DRES or other bus route re-locations be necessary? If so, coordinate with affected agency.
Record name and date of discussion with agency representative:

Will deliveries be permitted? If so, how will access be controlled? Deliveries to the Illini Union are at the loading dock east of the building, which is not in the area we are currently working.

Note - Signs are to be metal 24" x 36" signs with aptos font, mounted on stands as shown below.

Sarthak Prasad

Date approved: 11/8/2024 Approved By: Sarthak Prasad on behalf of Stacey DeLorenzo

Transportation Demand Management (TDM) Coordinator: Stacey DeLorenzo · Phone: (217) 300-1750 · fundscampustdm@illinois.edu

Sign: 'Alma Mater Access Only. Sidewalk Closed Ahead.'

Sign: 'Sidewalk Closed. Use Green Street sidewalk to access Illini Union.' (ADA accessible)

Sign: 'Sidewalk Closed. Bike Parking only.'

Sign: 'Illini Union Entrance'

Sign: 'Sidewalk Closed. Use Green Street sidewalk to access Alma Mater.' ADA accessible

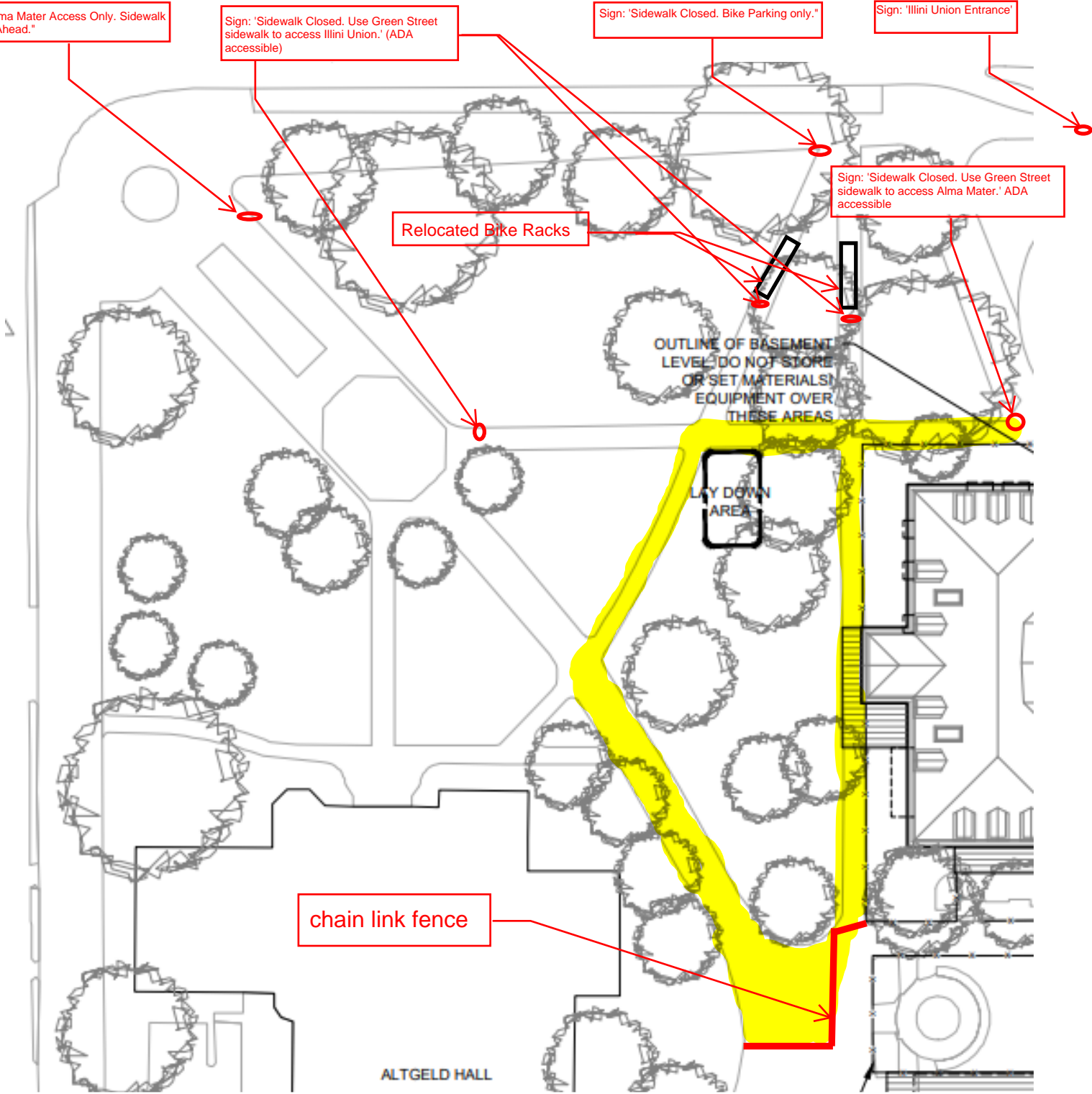
Relocated Bike Racks

OUTLINE OF BASEMENT LEVEL DO NOT STORE OR SET MATERIALS/EQUIPMENT OVER THESE AREAS

LAY DOWN AREA

chain link fence

ALTGELD HALL





Sign 6: 'Sidewalk closed ahead. Access Illini Union west entrance only. ADA accessible

**ALMA MATER ACCESS ONLY**  
**SIDEWALK CLOSED AHEAD**

**SIDEWALK CLOSED**

**USE GREEN STREET SIDEWALK  
TO ACCESS ILLINI UNION (ADA  
ACCESSIBLE)**

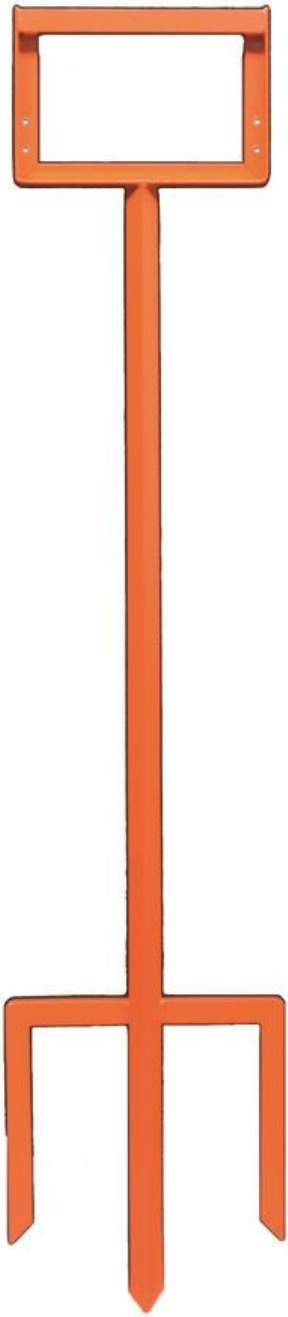
**SIDWALK CLOSED**

**BIKE PARKING ONLY**

**ILLINI UNION ENTRANCE**

**SIDEWALK CLOSED**  
**USE GREEN STREET SIDEWALK**  
**TO ACCESS ALMA MATER**  
**(ADA ACCESSIBLE)**

**SIDEWALK CLOSED AHEAD  
ACCESS TO ILLINI UNION WEST  
ENTRANCE ONLY  
(ADA ACCESSIBLE)**



Sign Stand