

BUILDING EMERGENCY ACTION PLAN

Physical Plant Services Building u0198 / 1501 South Oak Street, Champaign, IL

In any emergency situation you have a choice: **RUN**, **HIDE**, or **FIGHT**.

Only proceed if safe to do so.

RUN

Evacuation Assembly Areas¹

1. Good Weather: Grass Lot East of PPSB
2. Bad Weather: Central Receiving Warehouse (South End)

HIDE

Storm Refuge Areas²

1. Primary: Offices with interior walls and rooms without windows (custodial closets, restrooms, locker rooms, interior basement hallway)
2. Interior hallways with fire doors closed

Active Threat¹

1. Secure classroom.
2. Secure your office.

FIGHT

RUN

If you can safely leave the building, **RUN**.

HIDE

If you cannot safely leave, find a safe place to **HIDE**.

FIGHT

If you cannot RUN away safely or cannot HIDE, be prepared to **FIGHT** for your life.

NEED HELP?

Areas of Rescue Assistance²

There are no designated Areas of Rescue Assistance in this building. In a fire emergency move to the nearest exit on your floor without blocking the flow of

¹ Contact Emergency Management at 217-333-1216 to identify appropriate locations.

² Contact Code Compliance & Fire Safety at 217-265-5268 to identify appropriate locations.

BUILDING EMERGENCY ACTION PLAN

Physical Plant Services Building u0198 / 1501 South Oak Street, Champaign, IL

traffic. If conditions deteriorate, move into the stair landing behind the closed door, and await help.

More Info: <http://police.illinois.edu/run-hide-fight/>

Emergency Response Recommendations

The Department of Homeland Security and the University of Illinois at Urbana-Champaign Office of Campus Emergency Management recommend the following three responses to any emergency on campus: **RUN > HIDE > FIGHT**

Only follow these actions if safe to do so. When in doubt, follow your instincts—you are your own best advocate!

RUN

Action taken to leave an area for personal safety.

- Take the time now to learn the different ways to leave your building **before** there is an emergency.
- Evacuations are mandatory for fire alarms and when directed by authorities. **No exceptions!**
- Evacuate immediately. Pull manual fire alarm to prompt a response for others to evacuate.
- Take critical personal items only (keys, purse, and outerwear) and close doors behind you.
- Assist those who need help, but carefully consider whether you may put yourself at risk.
- Look for **EXIT** signs indicating potential egress/escape routes.
- If you are not able to evacuate, go to an Area of Rescue Assistance.
- Evacuate to Evacuation Assembly Area and remain until additional instructions are given.
- Alert authorities to those who may need assistance.
- Do not re-enter building until informed by emergency response personnel that it is safe to return.

ACTIVE THREAT:

- If it is safe to do so run out of the building. Get as far away as possible. Do not go to the Evacuation Assembly Area.
-

HIDE

Action taken to seek immediate shelter indoors when emergency conditions do not warrant or allow evacuation, such as for severe weather.

- Take the time now to learn the different ways to seek shelter within your building **before** there is an emergency.
- If you are outside, proceed to the nearest protective building.
- If sheltering-in-place due to severe weather, proceed to the identified Storm Refuge Area or to the lowest, most interior area of the building away from windows or hazardous equipment or materials.

ACTIVE THREAT:

- Lock or barricade your area.
 - Get to a place where the threat cannot see you.
 - Place cell phones on **silent**.
 - Do not make any noise.
 - Do not come out until you receive an Illini-Alert advising you it is safe.
-

FIGHT

Action taken as a last resort to increase your odds for survival.

ACTIVE THREAT:

BUILDING EMERGENCY ACTION PLAN

Physical Plant Services Building u0198 / 1501 South Oak Street, Champaign, IL

- If you cannot run away safely or cannot hide, **be prepared to fight with anything available to increase your odds for survival.**

Emergency Notification Systems

University Notifications — The University of Illinois at Urbana-Champaign **MAY** utilize any of the following mechanisms to notify the campus community of an emergency situation:

- **Illini-Alert Emergency Text Notification System** — Illini-Alert is an “opt-in” system designed to deliver text messages to those who have registered for the service. Illini-Alert automatically triggers mass mail and Twitter notifications. Sign up at <http://emergency.illinois.edu/>.
- **Public Broadcast Media Outlets** — The campus will utilize all necessary television and radio outlets to provide emergency information to the campus community.
- **NOAA Weather Radios** — The National Weather Service in Lincoln, Illinois, will post an alert message on NOAA weather radios.
- **Cable Channel UI-7** — Comcast Cable channel 7 will provide a scripted message on the bottom of the television screen. This can be utilized either before or after the Emergency Alert System is used.
- **265-UIPD** — An emergency voice message system will be provided via this telephone number to provide emergency information.
- **Telephone Alert System** — A systematic telephone call list or “telephone tree” designed to notify individuals throughout campus.

Access to University Notification mechanisms may be limited for occupants during an emergency. Buildings may need to provide their own Building and Department Internal Emergency Notifications.

Building and Department Internal Emergency Notifications - Individual buildings and departments may utilize their own mechanisms for communicating emergency information (i.e.: bullhorns, telephone trees, public address systems, and face-to-face contact). Ensure the following list is comprehensive enough to provide coverage for all areas. The following emergency notification system(s) and individuals have been identified specifically for your building to provide emergency information:

| Emergency Notification System | Primary Communicator | Backup Communicator |
|---|----------------------|----------------------------|
| All Employee Email | Director of CRC | Manager, Communications |
| Face-to-Face Communication | Floor Coordinators | Backup Coordinators |
| Speaker System (Voice Activated for Fire) | Brian Johnson | Charles Steiner |
| Speaker System for Severe Weather | Jerry Dinnin | Susan Zich & James Scherer |
| | | |
| | | |
| | | |
| | | |

BUILDING EMERGENCY ACTION PLAN

Physical Plant Services Building u0198 / 1501 South Oak Street, Champaign, IL

Floor Coordinators

Individuals responsible for assisting with the orderly evacuation or sheltering-in-place of all personnel within their area of responsibility and physically accounting for those individuals once convened at the evacuation assembly area(s).

Role of Floor Coordinators

- All actions should be done only if it is safe to do so.
- Emergency response personnel (police/fire) have full authority to order an evacuation or shutdown (see Appendix C if applicable). Floor Coordinators and the Building Emergency Management Team can initiate an evacuation and/or shutdown of the building.
- Individuals identified as Floor Coordinators assume the role voluntarily and understand they are not considered emergency responders.
- Floor Coordinators must be physically and emotionally able to perform the necessary functions of providing assistance with notification, evacuation or sheltering-in-place. (This may include assisting persons with functional needs.)
- Floor Coordinators should report observations of persons in need of rescue assistance to emergency responders or Building Emergency Management Team members.
- Floor Coordinators should report observed damage of building systems to emergency responders or Building Emergency Management Team members.

Floor Coordinators and Areas of Responsibility

| Floor Coordinator | Backup Coordinator | Area of Responsibility | Location |
|---|---|--|--|
| Storekeeper (Jim McGuire) | Mill Worker (Brad Ward) | Mill Shop and Storeroom | Zone A - Room 165, 1860 |
| Construction Superintendent (Tom Doud) | Construction Superintendent (Randy Long) | Construction Services Staff Offices | Zone B - Room 1840, 1850 |
| Foreperson, Paint Shop (David Middleton) | Painter (Matt Verplaetse) | Paint, Glass, Sign Shop | Zone C - Room 162, 163 |
| DDC Specialist (Scott Bahr) | DDC Specialist (Paul Foote) | 1800 Area (Retro-Commissioning, Systems & Controls, Energy Command Center) | Zone D - Conference Room 1810, C-1800, 1820 |
| Foreperson, Carpenter Shop (Robert Weeks) | Foreperson, Roofer (Shane Carr) | Roofing Shop, Carpenter Shop, and Furniture Restorer Shop | Zone E - Room 159, 164, and 160 |
| DDC Specialist (Ravi Ramrattan) | DDC Specialist (Bob Polett) | Computer Center | Zone F - Room 168 |
| AP Manager (Deborah Caparoon)A | Accounting Specialist (Deborah Tolbert) | Procurement Services | Zone G - Room 158 |
| Foreperson, Sheet Metal (Randy Reinhart) | Subforeperson, Sheet Metal (Mike Bishop) | Sheet Metal Shop | Zone H - Room 154 |
| Coordinator of Special Programs-Building Maintenance (Patrick Wood) | Facility Operations Specialist (Tom Auth) | Maintenance Support Staff, Fire Extinguisher Tech, Insulation Shop | Zone I - Room 157 |
| Subforeperson, Pipefitter (Alan Holt) | Foreperson, Plumber (Doug Winkler) | Pipe Trade Shops | Zone J - Room 153 |

BUILDING EMERGENCY ACTION PLAN

Physical Plant Services Building u0198 / 1501 South Oak Street, Champaign, IL

| | | | |
|--|--|---|--|
| Foreperson, Labor Shop (Robert (Rube) King) | Foreperson, Brick Mason Foreperson, Cement Finisher (Craig Harris) | Mason, Labor, Cement Finisher Shop | Zone K - Room 156 |
| Subforeperson, Steam Distribution (Al York) | Steam Distribution Operator (Daniel Hudson) | Steam Distr. & High Voltage Shop 25 | Zone L - Rooms 146 A-D |
| Foreperson, Ironworkers (Todd Hawkins) | Foreperson, Machinists (Stuart DeHaro) | Ironworker, Machine Shop, Tool Room | Zone M - Room 112, Tool Room 155 |
| Environmental Compliance Coordinator (Bill Walsh) | Office Support Associate (James Scherer) | Capital Programs Annex, CRC, and Safety and Compliance | Zone N - Suites 141, 147, and 145 |
| Chief Clerk (Lance Oliver) | Human Resources Coordinator (Anna Ratcheva-Staneva) | Employee Relations, Human Resources, Administration | Zone O - Suites 135 and 136 |
| Grounds Foreperson (Isaac Williams) | Grounds Subforeperson (Beau Renshaw) | Truck Bay (West side) – Grounds and Window Washers/Floor Crew | Zone P - Room 101, 105 |
| Building Service Foreperson (Joe Perkins) | Moving Crew Upgrade (Michael Hauserman) | BSW, Moving Crew | Zone Q - Room 103 |
| Supervisor of Building Craftsmen (Greg Moen) | Supervisor of Building Craftsmen (Rick Turner) | Truck Bay (East side) | Zone R - Room 107, 107A&B, 106 |
| Locksmith (Kelly Hutcherson) | Foreperson, Locksmith (Jon Vinton) | Key Distribution Shop | Zone S - Room 110 |
| Foreperson, Electrician (Todd Nicholas) | Foreperson, Electrician (Todd Woods) | Shop 03 | Zone T - Room 111C, 111D, 111 |
| Foreperson, Elevator Shop (Vince Schaub) | Elevator Mechanic (Eric Koester) | Elevator Shop | Zone U - Room 111A |
| Accountant (Anthony Ewing) | Office Administrator (Stacey Mitsdarffer) | Energy Services Business Operations | Zone V - Room 147D, 148A |
| Chief Engineering Draftsman II (Brian Kearney) | Facilities Information Management Coordinator (Beth Leitz) | F&S Administration Office, Engineering, Commissioning & Inspection, Facilities Information Resources, and South Hallway | Zone W - Suites 131-133A, 148, 117, FIR Vault, Suites 121A, 123, 125, Conference Rooms 127, 127B, 128 and Lobby |
| Associate Director, Cap Project Planning (Jon Hasselbring) | Architect, Cap. Planning (Tony Battaglia) | Capital Planning and Capital Construction | Zone X - Suite 115 |
| Manager Data Services (Patrick Duda) | Payroll Manager (Laresha Exum) | North and south side of basement | Zone Z1 - All IT Offices, Financial and Accounting Offices, Payroll |

BUILDING EMERGENCY ACTION PLAN

Physical Plant Services Building u0198 / 1501 South Oak Street, Champaign, IL

The following information has been voluntarily provided by those who have self-identified themselves as having a functional need. This information, since it is part of the BEAP, will be shared with employees within this building.

Persons with Access & Functional Needs

The following are **self-identified** persons with functional needs who may request evacuation, shelter-in-place or any other types of reasonable assistance during an emergency:

| | Name | Cell | Office Phone | Location |
|--------------|---|------|--------------|----------|
| Person | None identified | | | |
| Buddy | Names not included (Supervisors are required to identify person(s) within their area and make arrangements to provide assistance as necessary). | | | |
| Special Need | | | | |

| | Name | Cell | Office Phone | Location |
|--------------|------|------|--------------|----------|
| Person | | | | |
| Buddy | | | | |
| Special Need | | | | |

| | Name | Cell | Office Phone | Location |
|--------------|------|------|--------------|----------|
| Person | | | | |
| Buddy | | | | |
| Special Need | | | | |

| | Name | Cell | Office Phone | Location |
|--------------|------|------|--------------|----------|
| Person | | | | |
| Buddy | | | | |
| Special Need | | | | |

| | Name | Cell | Office Phone | Location |
|--------------|------|------|--------------|----------|
| Person | | | | |
| Buddy | | | | |
| Special Need | | | | |

| | Name | Cell | Office Phone | Location |
|--------------|------|------|--------------|----------|
| Person | | | | |
| Buddy | | | | |
| Special Need | | | | |

| | Name | Cell | Office Phone | Location |
|--|------|------|--------------|----------|
| | | | | |

BUILDING EMERGENCY ACTION PLAN

Physical Plant Services Building u0198 / 1501 South Oak Street, Champaign, IL

Building Emergency Management Team Contact Information

| Name | Cell | Office Phone | Home Phone | Email |
|--|--------------|--------------|------------|-----------------------|
| Executive Director of Facilities & Services | 416-998-0573 | 217-300-1144 | | ekamarah@illinois.edu |
| Director of Utilities & Energy Services | 217-822-0001 | 217-300-5810 | | roman@illinois.edu |
| Director of Engineering & Construction Services | 773-726-8206 | 217-244-6425 | | jimsims@illinois.edu |
| Director of Building Maintenance & Grounds | 217-721-1698 | 217-244-5902 | | dboehm@illinois.edu |
| Interim Director of Capital Programs | 217-344-0044 | 217-333-2668 | | mbwhite@illinois.edu |
| Director of Shared Administrative Services | 217-454-6816 | 217-244-7501 | | watkinsj@illinois.edu |
| Director of Safety & Compliance | 217-320-1104 | 217-265-6084 | | jneighbo@illinois.edu |
| Director of Human Resources Diversity & Strategy | 815-762-0341 | 217-244-1392 | | eas@illinois.edu |

Attributes of Building Emergency Management Team Members

- May have authority to make overall decisions for the building and/or department.
- Has thorough knowledge of the building's operational needs.
- Able and willing to serve as a liaison to emergency responders and/or University administrators regarding, but not limited to, emergency needs, status reports, communications.
- May distribute information to building occupants or gather information needed for dissemination to the Office of Public Affairs.
- May maintain financial and administrative records.
- Should have understanding of other team member's roles and responsibilities to provide team continuity and support if one or more members are unavailable during emergency.

Roles of Building Emergency Management Team Members

- Planning and Preparedness Actions
 - Assist with identifying Evacuation Assembly Area(s).
 - Assist with identifying Storm Refuge Area(s).
 - Assist with identifying Command Post Location.
 - Assist with identifying Areas of Rescue Assistance.
 - Establish Building and Departmental Internal Emergency Notification list.
 - Identify Floor Coordinators and provide proper training and/or guidance.
 - Solicit the list of **Self-Identified** Persons with Functional Needs.
 - Prepare and submit BEAP to Office of Campus Emergency Planning for approval.
 - Review and update BEAP annually.
 - Create and establish annual training and exercise schedules to test functionality of BEAP.
- Response Actions
 - Initiate Building and Departmental Internal Emergency Notifications to occupants when emergency has been verified.
 - Deploy Floor Coordinators to evacuate or shelter-in-place as required.
 - Building Emergency Management Team Members report to designated Command Post.

BUILDING EMERGENCY ACTION PLAN

Physical Plant Services Building u0198 / 1501 South Oak Street, Champaign, IL

If the emergency requires the **BUILDING EMERGENCY MANAGEMENT TEAM:**

Building Command Post

1. Garage and Carpool (First Floor Conference Room #B3)
2. Stores-Receiving Building Break Room 105 in the Stores section.
3. Plant Services Building Northeast (Room #201)

Phone List

METCAD (Metropolitan Computer-Aided Dispatch) — 911

Primary public safety consolidated dispatch center serving Champaign County for ALL police, fire, and emergency medical service (EMS) response. If you require any type of emergency response, call 911 from a cellular or any landline telephone.

University Police — 217-333-1216

Non-emergency/non-police response number for information on public safety, personal safety, and workplace safety.

Office of Campus Emergency Management — 217-333-1216

Serves as the focal point for emergency management, planning and preparedness questions, issues and activities.

Code Compliance and Fire Safety — 217-265-5268

Coordinates fire and life safety programs and the building and fire code compliance functions for the campus.

Facilities and Services — 217-333-0340

Provides maintenance and repair, utility services, construction, engineering, facilities planning and custodial services for University-owned buildings/facilities.

Division of Research Safety — 217-333-2755

Assists campus units in identifying and managing biological, chemical and radiological hazards within the campus environment.

Office of Public Affairs — 217-333-5010

Determines what information to disseminate to the media before, during, and after an emergency. The Office of Public Affairs will determine, at the time of the incident, who within the building is authorized to disseminate information to the media.

BUILDING EMERGENCY ACTION PLAN

Physical Plant Services Building u0198 / 1501 South Oak Street, Champaign, IL

Definitions

Area of Rescue Assistance — An area where people, including those with functional needs, can go to await assistance if they are not able to evacuate or get to another area of safety.

Building Command Post — A physical or virtual Command Post utilized by Building Emergency Management Team members to proactively manage an emergency or disaster.

Building Emergency Action Plan (BEAP) — A document that consists of emergency procedures to help facilitate and organize building occupant actions during an emergency.

Building Evacuation — Action taken to leave an area for personal safety.

Emergency Responders — Individuals specifically trained for emergency response, including police, fire, ambulance, public health and public works personnel.

Evacuation Assembly Area — The location where all evacuees will convene once an order to evacuate is given.

Floor Coordinators — Individuals responsible for assisting with the orderly evacuation or sheltering-in-place of all personnel within their area of responsibility and physically accounting for those individuals once convened at the evacuation assembly area(s).

Functional Needs — The needs of an individual who under usual circumstances is able to function on their own or with support systems. However, during an emergency, their level of independence may be challenged.

Shelter-in-Place — Action taken to seek immediate shelter indoors when emergency conditions do not warrant or allow evacuation.

Storm Refuge Area — Specific locations within University buildings/facilities that provide reasonable protection from severe weather. Not all University buildings/facilities have Storm Refuge Areas.

BUILDING EMERGENCY ACTION PLAN

Physical Plant Services Building u0198 / 1501 South Oak Street, Champaign, IL

Preparedness

Emergency preparedness is ultimately the responsibility of every faculty, staff, student, and visitor at the University of Illinois at Urbana-Champaign. Every occupant of a building should prepare for emergencies and disasters through the following methods:

- Sign up for the campus' emergency messaging system called "Illini-Alert" at: <http://emergency.illinois.edu/>
- Keep an Emergency Response Guide near your workspace. If you do not have one, request one through Office of Campus Emergency Management (333-1216) or download at: <http://police.illinois.edu>
- Follow Illini-Alert @IlliniAlert, UIPD @UIPD and Illinois Crime Alert @CrimeAlertIL on Twitter.
- Take the time to visit the Division of Public Safety's website at: <http://police.illinois.edu/> and educate yourself on the resources available to you.
- Make plans and preparations before an incident occurs.
- Use the "buddy system" when planning for emergency response actions.
- Maintain accountability of your personal belongings.
- Keep your work area(s) clean and free of debris and other combustible materials.
- Become familiar with your work area(s) and building. Pay attention to the location of evacuation maps (if available), fire extinguishers, fire alarm pull stations, and other fire and life safety equipment in the building.
- Recognize potential fire hazards and report them immediately.
- Remain aware of your surroundings and immediately call 911 to report suspicious persons or activities.
- Actively participate in safety training, including but not limited to fire extinguisher training, fire evacuation drills, first aid training and self-defense training.
- Annually review the building emergency plan and make recommendations for improvement to your Emergency Management Team Members.
- Create a preparedness kit to keep in or near your workspace. Visit <http://ready.gov/>.

This Building Emergency Action Plan (BEAP) is to be used in conjunction with the Emergency Response Guide (ERG), which provides recommendations for response actions to specific emergency events:

<https://police.illinois.edu/dpsapp/wp-content/uploads/2015/09/ERG.pdf>

Resource List

<http://police.illinois.edu/beap-resources>

BUILDING EMERGENCY ACTION PLAN

Physical Plant Services Building u0198 / 1501 South Oak Street, Champaign, IL

Record of Changes

| Date | Changed By | Description of Change |
|------------|------------------|---|
| 07/01/2015 | Maureen Banks | Creation |
| 08/15/2016 | Jeremy Neighbors | Annual Review |
| 11/13/2017 | Jeremy Neighbors | Annual Review |
| 07/08/2019 | Dana Gillon | Annual Review: update Management Contact List, Appendix B, Floor Coordinators and Emergency Notification System |
| 01/26/2021 | Jeremy Neighbors | Annual Review: update Management Contact List, Appendix B, Floor Coordinators and Emergency Notification System |
| 2/22/2023 | Brenda Houy | Annual Review: update Management Contact List, Appendix B, Floor Coordinators/Titles and Emergency Notification System, Payroll Department addition, eliminated Zone Z2 |
| | | |
| | | |
| | | |

Acknowledgement

The purpose of this BEAP is to establish a directory of key building personnel, provide general emergency response procedures, and promote planning, education and training for employees as required by federal and state law. This BEAP should be reviewed, updated, and exercised annually by all appropriate personnel. In addition, this BEAP should be distributed to all building employees.

The following individuals have reviewed and affirm this document for use by campus building occupants to support the emergency planning functions for the University of Illinois at Urbana-Champaign.

Director of Public Safety *Alice Cary* date: 03-10-23

Assistant Director of Emergency Management *Sherry A. Wooten* date: 03/10/2023

Campus Code Compliance & Fire Safety Authority *Mike Brown* date: 03-10-23

Senior Administrator(s) *B. Houy* date: 03/24/2023

_____ date: _____

_____ date _____

Revised: 02/27/2023

Prepared By: Brenda Houy

BUILDING EMERGENCY ACTION PLAN

Physical Plant Services Building u0198 / 1501 South Oak Street, Champaign, IL

Appendix A — Building Maps

Legend:

Evacuation
Assembly

Evacuation Assembly Area — The location where all evacuees will convene once an order to evacuate is given.

EXIT

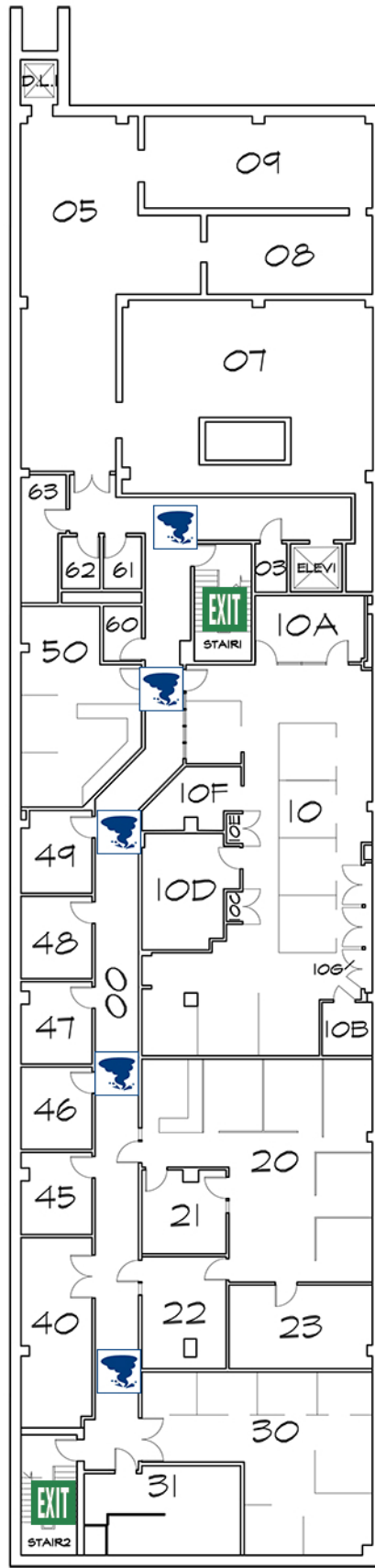
Exit — Designated route out of the building.



Area of Rescue Assistance — An area where people, including those with functional needs, can go to await assistance if they are not able to evacuate or get to another area of safety.



Storm Refuge Area — Specific locations within University buildings/facilities that provide reasonable protection from severe weather. Not all University buildings/facilities have Storm Refuge Areas.



Physical Plant Services Building

#0198 — 2020/02/19

Basement Floor Plan

Evacuation Assembly Areas:

1. Grass Lot east of PPSB
2. Central Receiving Warehouse

RUN

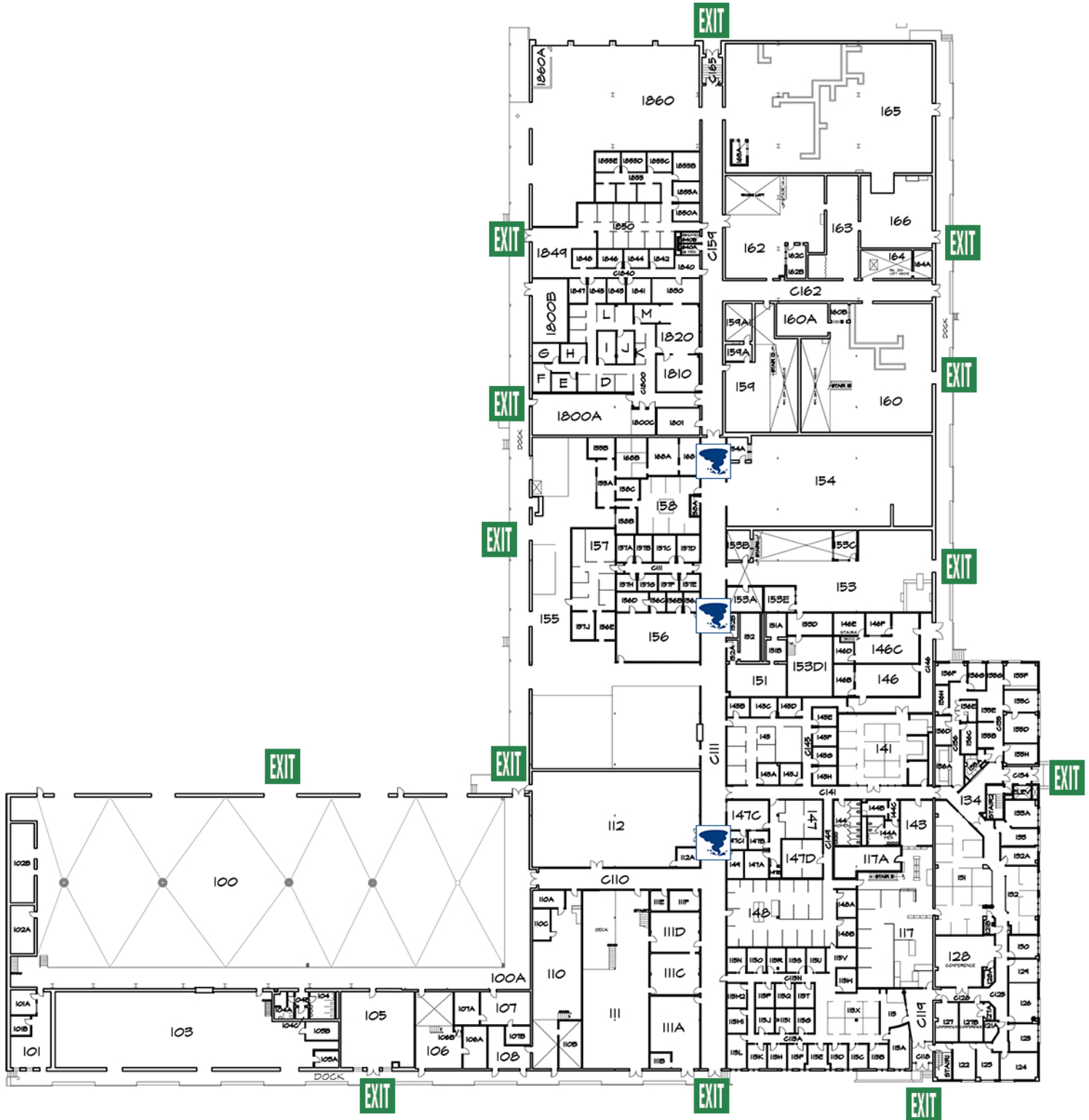
Leaving the area quickly is the best option if it is safe to do so

HIDE

When you can't or don't want to run, take shelter indoors.

FIGHT

As a last resort, you may need to fight to increase your chances of survival



Physical Plant Services Building

#0198 — 2020/02/19

First Floor Plan

Evacuation Assembly Areas:

1. Grass Lot east of PPSB
2. Central Receiving Warehouse

RUN

Leaving the area quickly is the best option if it is safe to do so

HIDE

When you can't or don't want to run, take shelter indoors.

FIGHT

As a last resort, you may need to fight to increase your chances of survival

BUILDING EMERGENCY ACTION PLAN

Physical Plant Services Building u0198 / 1501 South Oak Street, Champaign, IL

Appendix B — Employee Evacuation Accountability Form

- 1) Identified Floor Coordinators will check their area(s) of responsibility to ensure their employees have safely evacuated and/or sheltered-in-place.
- 2) Identified Floor Coordinators will bring their updated monthly list of PPSB employees to the designated Evacuation Assembly Area(s) and account for their respective employees.

BUILDING EMERGENCY ACTION PLAN

Physical Plant Services Building u0198 / 1501 South Oak Street, Champaign, IL

| Badge Id | Last Name | First Name | Dept | Shops |
|----------|------------------|---------------|--------------------------------|-------|
| 4542 | Daly | Chad | F&S Administration | |
| 3344 | Walker | Doniquiandria | F&S Administration | |
| 4568 | Ehley | Earl | HSG Admin | |
| 3299 | Alagna-McDade | Melissa | Bldg Maintenance Crafts/Trades | 01 |
| 6292 | Carr | Demetrius | Bldg Maintenance Crafts/Trades | 01 |
| 6354 | Jones | Eddie | Bldg Maintenance Crafts/Trades | 01 |
| 2511 | Moen | Gregory | Bldg Maintenance Crafts/Trades | 01 |
| 1074 | Moore | Matthew | Bldg Maintenance Crafts/Trades | 01 |
| 0975 | Newman Granadino | Christina | Bldg Maintenance Crafts/Trades | 01 |
| 0674 | Reed | Charles | Bldg Maintenance Crafts/Trades | 01 |
| 0387 | Szymanski | Thomas | Bldg Maintenance Crafts/Trades | 01 |
| 0112 | Weisman | David | Bldg Maintenance Crafts/Trades | 01 |
| 3353 | Brummer | Jedidiah | Bldg Maintenance Crafts/Trades | 02 |
| 1038 | Flynn | Richard | Bldg Maintenance Crafts/Trades | 02 |
| 0124 | Fontaine | Jean Marc | Bldg Maintenance Crafts/Trades | 02 |
| 3350 | Green | Darren | Bldg Maintenance Crafts/Trades | 02 |
| 1035 | Harpst | Christopher | Bldg Maintenance Crafts/Trades | 02 |
| 1031 | Harris | Mitchell | Bldg Maintenance Crafts/Trades | 02 |
| 0254 | Hasselbring | Eric | Bldg Maintenance Crafts/Trades | 02 |
| 3360 | Helfrich | Bryan | Bldg Maintenance Crafts/Trades | 02 |
| 0669 | Hicks | Thomas | Bldg Maintenance Crafts/Trades | 02 |
| 0248 | McCurry | Frank | Bldg Maintenance Crafts/Trades | 02 |
| 0269 | Miller | James | Bldg Maintenance Crafts/Trades | 02 |
| 1496 | Ringstrom | Matthew | Bldg Maintenance Crafts/Trades | 02 |
| 3359 | Scott | Marty | Bldg Maintenance Crafts/Trades | 02 |
| 1082 | Somers | Joshua | Bldg Maintenance Crafts/Trades | 02 |
| 3348 | Walsh | Matthew | Bldg Maintenance Crafts/Trades | 02 |
| 2626 | Wayne | Curtis | Bldg Maintenance Crafts/Trades | 02 |
| 0232 | Weeks | Robert | Bldg Maintenance Crafts/Trades | 02 |
| 0268 | Wells | Jerome | Bldg Maintenance Crafts/Trades | 02 |
| 2442 | Williams | Ramey | Bldg Maintenance Crafts/Trades | 02 |
| 2453 | Burton | Lucas | Construction Projects | 02 |
| 3022 | Nunn | Marty | Construction Projects | 02 |
| 2992 | Ritter | Sean | Construction Projects | 02 |
| 0887 | Abrahamson | Timothy | Bldg Maintenance Crafts/Trades | 03 |
| 3254 | Adamson | Nathan | Bldg Maintenance Crafts/Trades | 03 |
| 3799 | Baker | Luther | Bldg Maintenance Crafts/Trades | 03 |
| 0889 | Barbee | Matthew | Bldg Maintenance Crafts/Trades | 03 |
| 0793 | Boyd | Gareth | Bldg Maintenance Crafts/Trades | 03 |
| 3271 | Burge | Michael | Bldg Maintenance Crafts/Trades | 03 |
| 0809 | Burr | Brent | Bldg Maintenance Crafts/Trades | 03 |
| 2514 | Castor | Mark | Bldg Maintenance Crafts/Trades | 03 |

BUILDING EMERGENCY ACTION PLAN

Physical Plant Services Building u0198 / 1501 South Oak Street, Champaign, IL

| | | | | |
|------|-------------|-------------|--------------------------------|----|
| 3202 | Corum | William | Bldg Maintenance Crafts/Trades | 03 |
| 2099 | Dunn | Chad | Bldg Maintenance Crafts/Trades | 03 |
| 3264 | Elson | Samuel | Bldg Maintenance Crafts/Trades | 03 |
| 3028 | Gillespie | Traves | Bldg Maintenance Crafts/Trades | 03 |
| 1465 | Griffis | Matthew | Bldg Maintenance Crafts/Trades | 03 |
| 1471 | Grob | Keith | Bldg Maintenance Crafts/Trades | 03 |
| 3253 | Hubbard | Anthony | Bldg Maintenance Crafts/Trades | 03 |
| 4090 | Hughes | Jacob | Bldg Maintenance Crafts/Trades | 03 |
| 3281 | Jeffers | Arnold | Bldg Maintenance Crafts/Trades | 03 |
| 2200 | Jones | Ryan | Bldg Maintenance Crafts/Trades | 03 |
| 4086 | Kamradt | Kyle | Bldg Maintenance Crafts/Trades | 03 |
| 3263 | Kelm | Bradley | Bldg Maintenance Crafts/Trades | 03 |
| 0344 | Kinder | Benjamin | Bldg Maintenance Crafts/Trades | 03 |
| 2956 | Klein | Mark | Bldg Maintenance Crafts/Trades | 03 |
| 2202 | Lustfeldt | Larry | Bldg Maintenance Crafts/Trades | 03 |
| 2957 | Maxwell | Jason | Bldg Maintenance Crafts/Trades | 03 |
| 3718 | Maxwell | Michael | Bldg Maintenance Crafts/Trades | 03 |
| 3234 | Mingee | John | Bldg Maintenance Crafts/Trades | 03 |
| 3006 | Murray | Travis | Bldg Maintenance Crafts/Trades | 03 |
| 0356 | Nicholas | Lester | Bldg Maintenance Crafts/Trades | 03 |
| 3248 | Nichols | Cody | Bldg Maintenance Crafts/Trades | 03 |
| 0355 | Nichols | Dana | Bldg Maintenance Crafts/Trades | 03 |
| 4091 | Rash | John | Bldg Maintenance Crafts/Trades | 03 |
| 0925 | Reisner | Casey | Bldg Maintenance Crafts/Trades | 03 |
| 0380 | Revell | David | Bldg Maintenance Crafts/Trades | 03 |
| 3219 | Siems | Michael | Bldg Maintenance Crafts/Trades | 03 |
| 3249 | Street | Shane | Bldg Maintenance Crafts/Trades | 03 |
| 3343 | Terven | Thaddeus | Bldg Maintenance Crafts/Trades | 03 |
| 3284 | Wise | Craig | Bldg Maintenance Crafts/Trades | 03 |
| 3265 | Withers | Blake | Bldg Maintenance Crafts/Trades | 03 |
| 3270 | Woods | Todd | Bldg Maintenance Crafts/Trades | 03 |
| 0861 | Zimmerman | Charles | Bldg Maintenance Crafts/Trades | 03 |
| 0444 | Bagwell | Terry | Bldg Maintenance Crafts/Trades | 04 |
| 0678 | Carpenter | Nicholas | Bldg Maintenance Crafts/Trades | 04 |
| 0426 | Etchison | Bradley | Bldg Maintenance Crafts/Trades | 04 |
| 6504 | Faulkner | Matthew | Bldg Maintenance Crafts/Trades | 04 |
| 1492 | Fowler | Robert | Bldg Maintenance Crafts/Trades | 04 |
| 0438 | Grayson | Eric | Bldg Maintenance Crafts/Trades | 04 |
| 1491 | Hale | Joshua | Bldg Maintenance Crafts/Trades | 04 |
| 0439 | Harshbarger | Randall | Bldg Maintenance Crafts/Trades | 04 |
| 0447 | Henning | James | Bldg Maintenance Crafts/Trades | 04 |
| 3094 | Kaeding | Carey | Bldg Maintenance Crafts/Trades | 04 |
| 1490 | Kloepfel | Christopher | Bldg Maintenance Crafts/Trades | 04 |

BUILDING EMERGENCY ACTION PLAN

Physical Plant Services Building u0198 / 1501 South Oak Street, Champaign, IL

| | | | | |
|------|--------------|----------|--------------------------------|----|
| 0443 | Knight | Jerald | Bldg Maintenance Crafts/Trades | 04 |
| 3369 | Milburn | Daniel | Bldg Maintenance Crafts/Trades | 04 |
| 3374 | Paris | Terry | Bldg Maintenance Crafts/Trades | 04 |
| 0413 | Sailor | Craig | Bldg Maintenance Crafts/Trades | 04 |
| 0684 | Wiese | Douglas | Bldg Maintenance Crafts/Trades | 04 |
| 3029 | Rudicil | Joseph | Construction Projects | 04 |
| 4054 | Lewis | Brett | F&S Administration | 04 |
| 0535 | Dubson | Derek | Bldg Maintenance Crafts/Trades | 05 |
| 0564 | Horn | David | Bldg Maintenance Crafts/Trades | 05 |
| 0540 | Lecher | Gaylen | Bldg Maintenance Crafts/Trades | 05 |
| 0506 | Middleton | David | Bldg Maintenance Crafts/Trades | 05 |
| 0514 | Snodgrass | Jeffrey | F&S Glass Shop | 05 |
| 1088 | Verplaetse | Matthew | Bldg Maintenance Crafts/Trades | 05 |
| 0987 | Westray | Kevin | F&S Painters | 05 |
| 4058 | Vincent | Gayle | F&S Administration | 05 |
| 0630 | Bishop | Michael | Bldg Maintenance Crafts/Trades | 06 |
| 2261 | Blixen | William | Bldg Maintenance Crafts/Trades | 06 |
| 2687 | Childress | Jeffery | Bldg Maintenance Crafts/Trades | 06 |
| 0619 | Davis | Gregory | Bldg Maintenance Crafts/Trades | 06 |
| 2251 | George | Joseph | Bldg Maintenance Crafts/Trades | 06 |
| 3046 | McFarland | Donald | Bldg Maintenance Crafts/Trades | 06 |
| 0655 | Morrissey | Leland | Bldg Maintenance Crafts/Trades | 06 |
| 1826 | Nelson | Michael | Bldg Maintenance Crafts/Trades | 06 |
| 2686 | Padilla | Michael | Bldg Maintenance Crafts/Trades | 06 |
| 1833 | Presson | Gregory | Bldg Maintenance Crafts/Trades | 06 |
| 0649 | Rambole | Dawn | Bldg Maintenance Crafts/Trades | 06 |
| 0648 | Reinhart | Randy | Bldg Maintenance Crafts/Trades | 06 |
| 3357 | Terven | Jacob | Bldg Maintenance Crafts/Trades | 06 |
| 4075 | Cler | Tyler | Construction Projects | 06 |
| 4083 | Cochran | Aron | Construction Projects | 06 |
| 4081 | Severin | Brian | Construction Projects | 06 |
| 4564 | Adamson | Nathan | Bldg Maintenance Crafts/Trades | 07 |
| 0747 | Baker | Jonathan | Bldg Maintenance Crafts/Trades | 07 |
| 0022 | Carter | Kenneth | Bldg Maintenance Crafts/Trades | 07 |
| 2974 | Chaney | Justin | Bldg Maintenance Crafts/Trades | 07 |
| 0682 | Daly | Joseph | Bldg Maintenance Crafts/Trades | 07 |
| 0750 | Eichelberger | Austin | Bldg Maintenance Crafts/Trades | 07 |
| 0766 | Eichelberger | Bradley | Bldg Maintenance Crafts/Trades | 07 |
| 0751 | King | Robert | Bldg Maintenance Crafts/Trades | 07 |
| 0673 | Rushing | Joshua | Bldg Maintenance Crafts/Trades | 07 |
| 0764 | Schalk | Teresa | Bldg Maintenance Crafts/Trades | 07 |
| 0765 | Vasquez | Victor | Bldg Maintenance Crafts/Trades | 07 |
| 0676 | Walker | Chad | Bldg Maintenance Crafts/Trades | 07 |

BUILDING EMERGENCY ACTION PLAN

Physical Plant Services Building u0198 / 1501 South Oak Street, Champaign, IL

| | | | | |
|------|------------------|-------------|--------------------------------|----|
| 3379 | English | Shane | Construction Projects | 07 |
| 0710 | Griswold | Steven | Construction Projects | 07 |
| 0722 | Klaudt | Reece | Construction Projects | 07 |
| 4138 | Morton | Christopher | Construction Projects | 07 |
| 4140 | Rodriguez Diaz | Jesus | Construction Projects | 07 |
| 2234 | Tempel | Eric | Construction Projects | 07 |
| 3375 | Thorne | Ethan | Construction Projects | 07 |
| 4137 | Wilson | Shannon | Construction Projects | 07 |
| 4139 | Wood | Sarah | Construction Projects | 07 |
| 4163 | Jones | Riley | F&S Administration | 07 |
| 4161 | Munoz | Alonzo | F&S Administration | 07 |
| 0827 | Brown | Derick | Bldg Maintenance Crafts/Trades | 08 |
| 0807 | Cosat | Chad | Bldg Maintenance Crafts/Trades | 08 |
| 0386 | Donaldson | Jerry | Bldg Maintenance Crafts/Trades | 08 |
| 0078 | Harpst | Andrew | Bldg Maintenance Crafts/Trades | 08 |
| 0770 | De Haro | Stuart | F&S Administration | 08 |
| 3331 | Mendoza Bautista | Jose | F&S Administration | 08 |
| 2991 | Coy | Timothy | Bldg Maintenance Crafts/Trades | 10 |
| 1004 | Flemons | Atiba | Bldg Maintenance Crafts/Trades | 10 |
| 1017 | Quinley | Eric | Bldg Maintenance Crafts/Trades | 10 |
| 3048 | Edwards | Shaun | Building Operation | 12 |
| 3489 | Tucker | Dylan | Building Operation | 12 |
| 3779 | Anderson | Jaquaveon | F&S Administration | 12 |
| 0882 | Brunner | William | F&S Administration | 12 |
| 4141 | Deters | Justin | F&S Administration | 12 |
| 3293 | Harper | Dillion | F&S Administration | 12 |
| 3452 | Horton | Jeremy | F&S Administration | 12 |
| 3598 | Mullens | Richard | F&S Administration | 12 |
| 3647 | Leshoure | Elmore | F&S Fleet Operations | 12 |
| 4078 | Marty | Neil | F&S Fleet Operations | 12 |
| 4579 | Wilsey | Derek | Facilities and Services | 12 |
| 4546 | Bialeschki | Terrance | Grounds | 12 |
| 3485 | Brown | Deon | Grounds | 12 |
| 1291 | Brown | Ronald | Grounds | 12 |
| 2673 | Burden | Demarco | Grounds | 12 |
| 2360 | Carlson | Gregory | Grounds | 12 |
| 3480 | Coleman | Reed | Grounds | 12 |
| 1075 | Drewes | Schuyler | Grounds | 12 |
| 4156 | Elam | Nevin | Grounds | 12 |
| 4587 | Flowers | Adrian | Grounds | 12 |
| 0031 | Garrett | Chad | Grounds | 12 |
| 3689 | Hadler | Dalton | Grounds | 12 |
| 1221 | Harper | James | Grounds | 12 |

BUILDING EMERGENCY ACTION PLAN

Physical Plant Services Building u0198 / 1501 South Oak Street, Champaign, IL

| | | | | |
|------|------------|-------------|--------------------------------|----|
| 4142 | Hewerdine | Kristoffer | Grounds | 12 |
| 0880 | Isaksen | Zachary | Grounds | 12 |
| 0870 | Kates | Mark | Grounds | 12 |
| 0864 | Kellogg | Thomas | Grounds | 12 |
| 1073 | Kerr | Kenneth | Grounds | 12 |
| 2078 | Kinney | Stacey | Grounds | 12 |
| 4592 | LaReau | Darren | Grounds | 12 |
| 0883 | Mayfield | Dustin | Grounds | 12 |
| 4095 | Mayfield | Kolby | Grounds | 12 |
| 4552 | McGee | Christopher | Grounds | 12 |
| 0877 | McPhee | Mitchell | Grounds | 12 |
| 0879 | Pannbacker | Joshua | Grounds | 12 |
| 2221 | Paul | Stanley | Grounds | 12 |
| 2947 | Randle | Ray | Grounds | 12 |
| 4590 | Reifsteck | Dustin | Grounds | 12 |
| 4514 | Renshaw | Beau | Grounds | 12 |
| 3477 | Rosnett | Justin | Grounds | 12 |
| 3672 | Sexton | John | Grounds | 12 |
| 6399 | Smith | Jacob | Grounds | 12 |
| 0292 | Strohl | Nicholas | Grounds | 12 |
| 4589 | Tillman | Lathan | Grounds | 12 |
| 4562 | Vaughn | Billy | Grounds | 12 |
| 1072 | Waller | Jason | Grounds | 12 |
| 2680 | Washington | Duane | Grounds | 12 |
| 3951 | Weinstein | Alan | Grounds | 12 |
| 2038 | Welch | Ryan | Grounds | 12 |
| 2358 | Wells | Harry | Grounds | 12 |
| 3987 | Williams | Isaac | Grounds | 12 |
| 4802 | Winn | Carol | Grounds | 12 |
| 4501 | Wood | Rodney | Grounds | 12 |
| 0872 | Worley | Trent | Grounds | 12 |
| 2357 | Zech | Charles | Grounds | 12 |
| 2946 | Alsip | Matthew | Bldg Maintenance Crafts/Trades | 23 |
| 3615 | Brock | Jordyn | Bldg Maintenance Crafts/Trades | 23 |
| 2994 | Budde | Zachary | Bldg Maintenance Crafts/Trades | 23 |
| 2354 | Clifton | Timothy | Bldg Maintenance Crafts/Trades | 23 |
| 1472 | Coleman | James | Bldg Maintenance Crafts/Trades | 23 |
| 3727 | Fitzgerald | Benjamin | Bldg Maintenance Crafts/Trades | 23 |
| 3356 | Flesner | Christopher | Bldg Maintenance Crafts/Trades | 23 |
| 3351 | Goff | James | Bldg Maintenance Crafts/Trades | 23 |
| 3468 | Greene | Brian | Bldg Maintenance Crafts/Trades | 23 |
| 3301 | Hayes | Geoffrey | Bldg Maintenance Crafts/Trades | 23 |
| 3136 | Hembrey | Bryan | Bldg Maintenance Crafts/Trades | 23 |

BUILDING EMERGENCY ACTION PLAN

Physical Plant Services Building u0198 / 1501 South Oak Street, Champaign, IL

| | | | | |
|------|-----------|-------------|---------------------------------|----|
| 3550 | Hester | Scott | Bldg Maintenance Crafts/Trades | 23 |
| 0470 | Knight | Brian | Bldg Maintenance Crafts/Trades | 23 |
| 4036 | Michel | Luis | Bldg Maintenance Crafts/Trades | 23 |
| 2098 | Mills | Robert | Bldg Maintenance Crafts/Trades | 23 |
| 2949 | Moore | Lance | Bldg Maintenance Crafts/Trades | 23 |
| 3470 | Nowman | Dennis | Bldg Maintenance Crafts/Trades | 23 |
| 3787 | Rodriguez | Jonas | Bldg Maintenance Crafts/Trades | 23 |
| 0755 | Siefert | Leslie | Bldg Maintenance Crafts/Trades | 23 |
| 1045 | Smith | Anthony | Bldg Maintenance Crafts/Trades | 23 |
| 2097 | Smithenry | David | Bldg Maintenance Crafts/Trades | 23 |
| 0768 | Summers | Quint | Bldg Maintenance Crafts/Trades | 23 |
| 2800 | Terando | Monica | Bldg Maintenance Crafts/Trades | 23 |
| 7400 | Turner | John | Bldg Maintenance Crafts/Trades | 23 |
| 0471 | Winkler | Douglas | Bldg Maintenance Crafts/Trades | 23 |
| 3349 | Lewis | Troy | F&S Administration | 23 |
| 3300 | Haymon | Leslie | Utilities - UIUC | 23 |
| 2659 | Burton | Jeffrey | Bldg Maintenance Crafts/Trades | 24 |
| 3117 | Clayborn | Christopher | Bldg Maintenance Crafts/Trades | 24 |
| 3364 | Cooper | Kevin | Bldg Maintenance Crafts/Trades | 24 |
| 2450 | Corzine | Christopher | Bldg Maintenance Crafts/Trades | 24 |
| 2934 | Eads | Christopher | Bldg Maintenance Crafts/Trades | 24 |
| 3354 | Glascoock | Steven | Bldg Maintenance Crafts/Trades | 24 |
| 2936 | Gramlich | Jason | Bldg Maintenance Crafts/Trades | 24 |
| 3626 | Griest | Justin | Bldg Maintenance Crafts/Trades | 24 |
| 1643 | Hudson | Daniel | Bldg Maintenance Crafts/Trades | 24 |
| 0477 | Kappes | Cory | Bldg Maintenance Crafts/Trades | 24 |
| 2423 | Karnes | Kevin | Bldg Maintenance Crafts/Trades | 24 |
| 2406 | Ligocki | Michael | Bldg Maintenance Crafts/Trades | 24 |
| 3713 | Likens | Brett | Bldg Maintenance Crafts/Trades | 24 |
| 1488 | Nguyen | Khoi | Bldg Maintenance Crafts/Trades | 24 |
| 3716 | Park | Robert | Bldg Maintenance Crafts/Trades | 24 |
| 2666 | Peacock | Andrew | Bldg Maintenance Crafts/Trades | 24 |
| 2935 | Redmon | Joseph | Bldg Maintenance Crafts/Trades | 24 |
| 3045 | Schmidt | Justin | Bldg Maintenance Crafts/Trades | 24 |
| 2374 | Smith | John | Bldg Maintenance Crafts/Trades | 24 |
| 2413 | Smith | Kenneth | Bldg Maintenance Crafts/Trades | 24 |
| 0828 | Spencer | John | Bldg Maintenance Crafts/Trades | 24 |
| 3628 | Thompson | Jeffrey | Bldg Maintenance Crafts/Trades | 24 |
| 2375 | York | Albert | Bldg Maintenance Crafts/Trades | 24 |
| 3235 | Bolser | Chad | Electric Distribution Ext Maint | 25 |
| 3135 | Dietz | Christopher | Electric Distribution Ext Maint | 25 |
| 2526 | Ford | Byron | Electric Distribution Ext Maint | 25 |
| 0971 | Friedman | Michael | Electric Distribution Ext Maint | 25 |

BUILDING EMERGENCY ACTION PLAN

Physical Plant Services Building u0198 / 1501 South Oak Street, Champaign, IL

| | | | | |
|------|------------|-------------|---------------------------------|----|
| 0938 | Hays | Larry | Electric Distribution Ext Maint | 25 |
| 2507 | Isaacs | Jeffrey | Electric Distribution Ext Maint | 25 |
| 3258 | Johnson | Brian | Electric Distribution Ext Maint | 25 |
| 0330 | Karlson | Jon | Electric Distribution Ext Maint | 25 |
| 3377 | Shilts | Brett | Electric Distribution Ext Maint | 25 |
| 2533 | Stiner | Charles | Electric Distribution Ext Maint | 25 |
| 3031 | Warren | Matthew | Electric Distribution Ext Maint | 25 |
| 1097 | Watson | John | Electric Distribution Ext Maint | 25 |
| 3732 | Burnett | Cynthia | Bldg Maintenance Crafts/Trades | 29 |
| 2913 | Granadino | Greg | Bldg Maintenance Crafts/Trades | 29 |
| 2915 | Hutcherson | Kelly | Bldg Maintenance Crafts/Trades | 29 |
| 2901 | Lacy | Richard | Bldg Maintenance Crafts/Trades | 29 |
| 0754 | Vesely | David | Bldg Maintenance Crafts/Trades | 29 |
| 2914 | Vinton | John | Bldg Maintenance Crafts/Trades | 29 |
| 6117 | Burnett | Andrew | Bldg Maintenance Crafts/Trades | 31 |
| 2437 | Merkle | Alexander | Bldg Maintenance Crafts/Trades | 31 |
| 2067 | Ritter | Ryan | Bldg Maintenance Crafts/Trades | 31 |
| 3114 | Schmidt | John | Bldg Maintenance Crafts/Trades | 31 |
| 3041 | Taylor | Jeremy | Bldg Maintenance Crafts/Trades | 31 |
| 0798 | Tiouririne | Ali | Bldg Maintenance Crafts/Trades | 31 |
| 3116 | Tran | Len | Bldg Maintenance Crafts/Trades | 31 |
| 0283 | Arbogast | Joseph | Bldg Maintenance Crafts/Trades | 33 |
| 3314 | Knapp | Kevin | Bldg Maintenance Crafts/Trades | 33 |
| 3310 | Koester | Eric | Bldg Maintenance Crafts/Trades | 33 |
| 3315 | Perry | Ryan | Bldg Maintenance Crafts/Trades | 33 |
| 0197 | Pryor | Ronald | Bldg Maintenance Crafts/Trades | 33 |
| 4068 | Iovito | Carrie | F&S Administration | 33 |
| 3748 | Sweikar | Daniel | F&S Administration | 33 |
| 3419 | Carr | Shane | Bldg Maintenance Crafts/Trades | 34 |
| 3152 | Harrison | Christopher | Bldg Maintenance Crafts/Trades | 34 |
| 3079 | Houser | Travis | Bldg Maintenance Crafts/Trades | 34 |
| 3401 | Mayhall | Garret | Bldg Maintenance Crafts/Trades | 34 |
| 4147 | Dickison | Shane | F&S Administration | 34 |
| 3765 | Gallagher | Robert | F&S Administration | 34 |
| 0965 | McCullough | Gabriel | F&S Administration | 34 |
| 3081 | Ramsey | Jonathan | F&S Administration | 34 |
| 4132 | Sandefer | Andrew | F&S Administration | 34 |
| 3731 | Abbott | Laura | Bldg Maintenance Crafts/Trades | 35 |
| 3458 | Chesnut | Mark | Bldg Maintenance Crafts/Trades | 35 |
| 0990 | Davis | Zachariah | Bldg Maintenance Crafts/Trades | 35 |
| 1272 | Egolf | Kody | Bldg Maintenance Crafts/Trades | 35 |
| 3535 | Fiedler | Jeffrey | Bldg Maintenance Crafts/Trades | 35 |
| 3355 | Gadbury | Michael | Bldg Maintenance Crafts/Trades | 35 |

BUILDING EMERGENCY ACTION PLAN

Physical Plant Services Building u0198 / 1501 South Oak Street, Champaign, IL

| | | | | |
|------|------------|-----------|--------------------------------|----|
| 3057 | Glasa | Robert | Bldg Maintenance Crafts/Trades | 35 |
| 3547 | Grooms | Jason | Bldg Maintenance Crafts/Trades | 35 |
| 2955 | Hagan | Ronald | Bldg Maintenance Crafts/Trades | 35 |
| 3037 | Hemphill | Prentiss | Bldg Maintenance Crafts/Trades | 35 |
| 3530 | Holt | Alan | Bldg Maintenance Crafts/Trades | 35 |
| 2969 | Jones | Kelly | Bldg Maintenance Crafts/Trades | 35 |
| 2958 | Marriott | Levi | Bldg Maintenance Crafts/Trades | 35 |
| 3472 | Rhodes | Dustin | Bldg Maintenance Crafts/Trades | 35 |
| 1026 | Roseman | Cory | Bldg Maintenance Crafts/Trades | 35 |
| 3537 | Silver | Neal | Bldg Maintenance Crafts/Trades | 35 |
| 2878 | Smith | James | Bldg Maintenance Crafts/Trades | 35 |
| 3469 | Warren | Clarence | Bldg Maintenance Crafts/Trades | 35 |
| 3533 | White | Kevin | Bldg Maintenance Crafts/Trades | 35 |
| 4056 | Roberts | Bradley | Construction Projects | 35 |
| 4067 | Sallee | David | Construction Projects | 35 |
| 4000 | Buchholz | Leonard | F&S Crafts and Trades | 35 |
| 3789 | Schlueter | August | F&S Crafts and Trades | 35 |
| 3711 | Amabeli | Stephanie | Bldg Maintenance Crafts/Trades | 37 |
| 1287 | Moore | Andrew | Bldg Maintenance Crafts/Trades | 37 |
| 1257 | Stine | Mark | Bldg Maintenance Crafts/Trades | 37 |
| 4505 | Adams | William | Waste Management | 37 |
| 0293 | Hadler | Shawn | Waste Management | 37 |
| 3794 | Matlock | Austin | Bldg Maintenance Crafts/Trades | 41 |
| 4125 | Clawson | Mark | EMS Controls | 41 |
| 4112 | Gorman | Kyler | EMS Controls | 41 |
| 4113 | Huls | Travis | EMS Controls | 41 |
| 4123 | McDowell | David | EMS Controls | 41 |
| 3611 | Ayers | Zachariah | F&S Administration | 41 |
| 0892 | Harris | Craig | Bldg Maintenance Crafts/Trades | 49 |
| 4906 | Iliff | Travis | Bldg Maintenance Crafts/Trades | 49 |
| 4905 | Richardson | David | Bldg Maintenance Crafts/Trades | 49 |
| 4907 | Zindars | Bruce | Bldg Maintenance Crafts/Trades | 49 |
| 3039 | Davis | Erik | Bldg Maintenance Crafts/Trades | 50 |
| 0563 | Gilpin | Gary | Bldg Maintenance Crafts/Trades | 50 |
| 0566 | Hawkins | Todd | Bldg Maintenance Crafts/Trades | 50 |
| 3352 | Paris | Michael | Bldg Maintenance Crafts/Trades | 50 |
| 4059 | Algiene | Rene | F&S Administration | 50 |
| 3686 | Balsamello | Brett | F&S Administration | 50 |
| 0695 | Ketchum | Aaron | Bldg Maintenance Crafts/Trades | 52 |
| 0700 | McGraw | Clint | Bldg Maintenance Crafts/Trades | 52 |
| 0070 | Merritt | Anthony | Bldg Maintenance Crafts/Trades | 52 |
| 0943 | Buesing | William | Bldg Maintenance Crafts/Trades | 55 |
| 3278 | Dahl | Stephen | Bldg Maintenance Crafts/Trades | 55 |

BUILDING EMERGENCY ACTION PLAN

Physical Plant Services Building u0198 / 1501 South Oak Street, Champaign, IL

| | | | | |
|------|--------------|--------------|--------------------------------|----|
| 3336 | Dalton | Jacob | Bldg Maintenance Crafts/Trades | 55 |
| 3132 | King | James | Bldg Maintenance Crafts/Trades | 55 |
| 0578 | Albert | Marcus | EMS Controls | 55 |
| 3226 | Burgin | Theodore | EMS Controls | 55 |
| 0328 | Cook | Christopher | EMS Controls | 55 |
| 3274 | Ellison | Brandon | EMS Controls | 55 |
| 3247 | Ferpotto | Timothy | EMS Controls | 55 |
| 3241 | Gehrt | Brian | EMS Controls | 55 |
| 3283 | Hettinger | Robert | EMS Controls | 55 |
| 2059 | Lansford | David | EMS Controls | 55 |
| 0493 | Mueller | Norman | EMS Controls | 55 |
| 1367 | Pierson | Dustin | EMS Controls | 55 |
| 1093 | Revell | Jeffrey | EMS Controls | 55 |
| 0343 | Reynolds | Eric | EMS Controls | 55 |
| 1270 | Tharp | Derick | EMS Controls | 55 |
| 0978 | Witte | Daryl | EMS Controls | 55 |
| 3714 | Logsdon | Ryan | F&S Administration | 55 |
| 2754 | Alsip | Michael | F&S Business Operations | AC |
| 1081 | Funk | Daren | F&S Business Operations | AC |
| 2187 | Garcia | Hilda | F&S Business Operations | AC |
| 3089 | Gones | Lucas | F&S Business Operations | AC |
| 3088 | Lee | Soonjin | F&S Business Operations | AC |
| 3092 | Springfield | Tucker | F&S Business Operations | AC |
| 1481 | Sweid | Ziad | F&S Business Operations | AC |
| 1885 | Watkins | Jennifer | F&S Business Operations | AC |
| 3481 | Kamarah | Ehab | Capital Planning | AS |
| 2993 | Arshad | Syed | F&S HR & Employee Relations | AS |
| 0760 | Auth | Thomas | Bldg Maintenance Crafts/Trades | BL |
| 6111 | Barcus | Mark | Bldg Maintenance Crafts/Trades | BL |
| 2469 | Boehm | David | Bldg Maintenance Crafts/Trades | BL |
| 1883 | Emmert | Robert | Bldg Maintenance Crafts/Trades | BL |
| 2370 | Snyder | Kirsten | Bldg Maintenance Crafts/Trades | BL |
| 1486 | Walsh | Richard | Bldg Maintenance Crafts/Trades | BL |
| 4079 | Alimchandani | Muskaan | Center Innov in Teach Learn | BL |
| 2227 | Mininger | Timothy | Construction Projects | BL |
| 3261 | Bainbridge | Steven | F&S Administration | BL |
| 2937 | Wood | Patrick | F&S Safety & Compl-OSH | BL |
| 3772 | Merchant | Aafreen Amin | Physics | BL |
| 3365 | Drish | David | Building Operation | BW |
| 3125 | Hauserman | Michael | Building Operation | BW |
| 3122 | Head | James | Building Operation | BW |
| 0690 | Ketteman | Delbert | Building Operation | BW |
| 3340 | Larkin | Rodney | Building Operation | BW |

BUILDING EMERGENCY ACTION PLAN

Physical Plant Services Building u0198 / 1501 South Oak Street, Champaign, IL

| | | | | |
|------|-------------|-------------|-------------------------------------|----|
| 6302 | Mokaphan | Saensuk | Building Operation | BW |
| 6149 | Morris | John | Building Operation | BW |
| 3441 | Peacock | Turhan | Building Operation | BW |
| 0737 | Perkins | Joseph | Building Operation | BW |
| 3457 | Wheatley | Ashley | F&S Building Services | BW |
| 0776 | Sims | James | Capital Planning | CA |
| 4038 | Sperl | Katie | F&S Administration | CF |
| 3595 | Brown | Michael | F&S Code Compliance & Fire Safety | CF |
| 4102 | Bachert | Randall | F&S Comm & Inspection Services | CI |
| 3675 | Barrett | Teresa | F&S Comm & Inspection Services | CI |
| 6885 | Cope | Cynthia | F&S Comm & Inspection Services | CI |
| 0642 | Elliott | Bryan | F&S Comm & Inspection Services | CI |
| 0247 | Huckstep | Brian | F&S Comm & Inspection Services | CI |
| 3899 | Jakobsson | Jonathan | F&S Comm & Inspection Services | CI |
| 3252 | Lancaster | David | F&S Comm & Inspection Services | CI |
| 3033 | Pellum | Joshua | F&S Comm & Inspection Services | CI |
| 2543 | Spencer | Jessica | Construction Admin | CO |
| 3342 | Billam | Dale | Construction Improvements | CO |
| 3133 | Reynolds | Jason | Construction Improvements | CO |
| 1040 | Rubin | Joshua | Construction Improvements | CO |
| 3130 | Woliung | Russell | Construction Improvements | CO |
| 1500 | Dillingham | Richard | Construction Projects | CO |
| 7504 | Doud | Thomas | Construction Projects | CO |
| 0252 | Dowler | David | Construction Projects | CO |
| 2100 | Gallivan | Richard | Construction Projects | CO |
| 1039 | Holt | Robert | Construction Projects | CO |
| 4066 | Lamb | Jeremy | Construction Projects | CO |
| 3280 | Long | Randy | Construction Projects | CO |
| 2759 | Battaglia | Anthony | Capital Planning | CP |
| 2265 | Craig | Dennis | Capital Planning | CP |
| 3562 | Lee | Erika | Capital Planning | CP |
| 2266 | Lewis | Brent | Capital Planning | CP |
| 3725 | Binder | Maranna | F&S Administration | CP |
| 2426 | Klein | Bradley | F&S Deferred Maintenance Program | CP |
| 1094 | Anzelmo | Christopher | F&S Engineering Services | CP |
| 3687 | Fesemyer | Jenna | Counseling Center | CR |
| 3073 | Bigelow | Rebecca | Customer Relations & Communications | CR |
| 0976 | Breitwieser | Steven | Customer Relations & Communications | CR |
| 3080 | Carlson | Cynthia | Customer Relations & Communications | CR |
| 3146 | Tate | Travis | Customer Relations & Communications | CR |

BUILDING EMERGENCY ACTION PLAN

Physical Plant Services Building u0198 / 1501 South Oak Street, Champaign, IL

| | | | | |
|------|--------------|-------------|--------------------------------|----|
| 4063 | Balch | Katherine | F&S Administration | CR |
| 3141 | Gordon | Malikah | F&S Administration | CR |
| 3857 | Barber | John | F&S IT Svcs | CS |
| 1280 | Brandt | James | F&S IT Svcs | CS |
| 4149 | Duda | Nikkole | F&S IT Svcs | CS |
| 2362 | Duda | Patrick | F&S IT Svcs | CS |
| 3371 | Fancher | Matthew | F&S IT Svcs | CS |
| 2552 | Fradkin | Andres | F&S IT Svcs | CS |
| 3454 | Hasty | Dustin | F&S IT Svcs | CS |
| 1278 | Krumins | George | F&S IT Svcs | CS |
| 1275 | Lewis | Brian | F&S IT Svcs | CS |
| 2630 | Meyer | Benjamin | F&S IT Svcs | CS |
| 2774 | Nelligan | Steven | F&S IT Svcs | CS |
| 3341 | Roberts | Miakel | F&S IT Svcs | CS |
| 4148 | Satyam | Sangeetha | F&S IT Svcs | CS |
| 3479 | Smith | Christopher | F&S IT Svcs | CS |
| 1296 | Thompson | Clarence | F&S IT Svcs | CS |
| 2982 | Trankina | Bradlee | F&S IT Svcs | CS |
| 0825 | Winterbottom | Russell | F&S IT Svcs | CS |
| 4143 | Weber | Jamison | F&S Administration | CS |
| 3157 | Peacock | Lisa | Construction Improvements | DR |
| 2487 | Finet | Brian | EMS Controls | DR |
| 3668 | Johnson | Jaden | F&S Administration | DR |
| 2461 | Keller | Thomas | F&S Engineering Services | DR |
| 7527 | Koric | Sanja | F&S Engineering Services | DR |
| 2725 | McClure | Donna | F&S Engineering Services | DR |
| 1065 | Stilger | Michael | Project Management | DR |
| 2091 | Brewster | Kathryn | Energy Services Administration | EA |
| 4106 | Cantrell | James | Energy Services Administration | EA |
| 0556 | Ewing | Anthony | Energy Services Administration | EA |
| 2182 | Green | David | Energy Services Administration | EA |
| 2757 | Landes | Gregory | Energy Services Administration | EA |
| 2136 | Mitsdarffer | Stacey | Energy Services Administration | EA |
| 0193 | Perfetti | Amber | Energy Services Administration | EA |
| 3816 | Reifsteck | Kent | Energy Services Administration | EA |
| 3147 | Williams | April | Energy Services Administration | EA |
| 1458 | Roman | Robert | F&S Administration | EA |
| 2760 | Spurlock | Anthony | F&S Administration | EA |
| 0100 | Richardson | Betsy | F&S Safety & Compl-ECS | EC |
| 3027 | Ruhter | Colleen | F&S Safety & Compl-ECS | EC |
| 3026 | Walsh | William | F&S Safety & Compl-ECS | EC |
| 2768 | Wilcoxon | David | F&S Safety & Compl-ECS | EC |
| 2258 | Duitsman | Christian | Conservation and RcX | ER |

BUILDING EMERGENCY ACTION PLAN

Physical Plant Services Building u0198 / 1501 South Oak Street, Champaign, IL

| | | | | |
|------|------------------|-------------|----------------------------------|----|
| 1384 | Foote | Gerard | Conservation and RcX | ER |
| 7517 | Helmink | Karl | Conservation and RcX | ER |
| 0342 | Johnson | Jeremy | Conservation and RcX | ER |
| 4037 | Kim | Donghwa | Conservation and RcX | ER |
| 4027 | Koric | Amar | Conservation and RcX | ER |
| 2076 | Miller | Justin | Conservation and RcX | ER |
| 7546 | Niebuhr | Kendall | Conservation and RcX | ER |
| 2532 | Pettice | Brian | Conservation and RcX | ER |
| 2252 | York | Christopher | Conservation and RcX | ER |
| 3674 | Biernacki | Allison | Energy Services Administration | ER |
| 3451 | Cummings | Daniel | F&S Eng Svcs Retro Commissioning | ER |
| 2088 | Hoffmann | Kelly | Capital Planning | ES |
| 7526 | Bryant | Robert | F&S Engineering Services | ES |
| 0671 | Cler | Kristi | F&S Engineering Services | ES |
| 7524 | Ellison | Bradley | F&S Engineering Services | ES |
| 2944 | Halm | Michael | F&S Engineering Services | ES |
| 2000 | Kearney | Brian | F&S Engineering Services | ES |
| 7512 | Keaton | Bruce | F&S Engineering Services | ES |
| 3685 | Koon | Jonathan | F&S Engineering Services | ES |
| 7515 | Sweeney | Eva | F&S Engineering Services | ES |
| 4094 | Khetarpal | Prachi | F&S Administration | HR |
| 0688 | McCurry | Shauna | F&S Administration | HR |
| 3739 | Oliver | Lance | F&S Administration | HR |
| 2752 | Boatner | Melvin | F&S HR & Employee Relations | HR |
| 0364 | Exum | Larisha | F&S HR & Employee Relations | HR |
| 0787 | Ratcheva-Staneva | Anna | F&S HR & Employee Relations | HR |
| 3384 | Shouli | Worood | F&S HR & Employee Relations | HR |
| 2948 | Smith | Eric | F&S HR & Employee Relations | HR |
| 0865 | Fijalkovich | Bryan | Facilities and Services | HR |
| 3637 | McCray | Ken | Facilities and Services | HR |
| 4072 | Schlosser | Dallas | Facilities and Services | HR |
| 0065 | Craven | Heather | F&S Administration | OC |
| 3614 | Head | Gina | F&S Safety & Compl-OSH | OC |
| 3616 | Kuhlman | Abinidi | F&S Safety & Compl-OSH | OC |
| 0052 | Neighbors | Jeremy | F&S Safety & Compl-OSH | OC |
| 2635 | Nieves | Angel | F&S Safety & Compl-OSH | OC |
| 3678 | McElvain | Mary | Safety and Compliance | OC |
| 4069 | Hajeissa | Dina | Architecture | PA |
| 3440 | Bicknell | Cheryl | Capital Planning | PG |
| 3363 | Hasselbring | Jonathan | Capital Planning | PG |
| 3597 | Villanti | Joseph | Capital Planning | PG |
| 2459 | Beane | Trent | Construction Projects | PG |
| 2458 | Chalifoux | Kristine | Construction Projects | PG |

BUILDING EMERGENCY ACTION PLAN

Physical Plant Services Building u0198 / 1501 South Oak Street, Champaign, IL

| | | | | |
|------|---------------------|-----------------|--------------------------------|----|
| 3833 | Davis | Alaina | Construction Projects | PG |
| 3056 | Fifield | Corey | Construction Projects | PG |
| 3366 | Liong | Jackson | Construction Projects | PG |
| 0970 | Roessler | Mark | F&S Administration | PG |
| 4028 | Ravipati | Sathish Kumar | Facilities and Services | PG |
| 4159 | Muraleetharan | Amirthavarshini | Illini Union-Oper | PG |
| 2391 | Lamaster | Stanley | Project Management | PG |
| 2576 | Price | Kevin | Project Management | PG |
| 4151 | Roesler | Sandra | Project Management | PG |
| 2764 | Stanev | Nick | Project Management | PG |
| 4152 | Dillavou | Darce | F&S Administration | PO |
| 3777 | Johnson | Karen | F&S Administration | PO |
| 1850 | Caparoon | Deborah | F&S Procurement Services | PO |
| 2670 | Flynn | Dawn | F&S Procurement Services | PO |
| 3600 | Miller | Leslie | F&S Procurement Services | PO |
| 0984 | Thompson | Maria | F&S Procurement Services | PO |
| 2986 | Tolbert | Deborah | F&S Procurement Services | PO |
| 3824 | Walsh | Patricia | F&S Procurement Services | PO |
| 2034 | Wease | Tanya | F&S Procurement Services | PO |
| 3811 | Nava | Elizabeth | Bldg Maintenance Crafts/Trades | PS |
| 3726 | Harmon | Joseph | F&S Administration | RM |
| 3699 | Pinnell | Justin | F&S Administration | RM |
| 4099 | Thompson | Brett | F&S Administration | RM |
| 3755 | Brahme | Sameera | Facilities and Services | RM |
| 2119 | Kupferschmid | Chadwick | Facility Information Resources | RM |
| 7503 | Leitz | Beth | Facility Information Resources | RM |
| 3148 | McLaughlin-Garrison | Kimberly | Facility Information Resources | RM |
| 3771 | Houy | Brenda | F&S Administration | SA |
| 3775 | Ward | William | Bldg Maintenance Crafts/Trades | SJ |
| 7541 | Bahr | Scott | EMS Controls | SJ |
| 2923 | Gupta | Ayush | EMS Controls | SJ |
| 7516 | Hardin | David | EMS Controls | SJ |
| 1825 | Jackson | Shane | EMS Controls | SJ |
| 7505 | Marx | Noah | EMS Controls | SJ |
| 2369 | O'Mahoney | Julie | EMS Controls | SJ |
| 1005 | Pollett | Robert | EMS Controls | SJ |
| 1089 | Ramrattan | Ravi | EMS Controls | SJ |
| 2262 | Voorhees | Michael | EMS Controls | SJ |
| 4044 | Abbott | Zachariah | F&S Administration | SJ |
| 1480 | Edwards | Darien | F&S Administration | SJ |
| 4039 | Wahls | Chad | F&S Administration | SJ |
| 3497 | Collins | Halie | Engineering Undergrad Programs | SP |
| 3435 | Soltis | Sinead | Sustainability | SP |

BUILDING EMERGENCY ACTION PLAN

Physical Plant Services Building u0198 / 1501 South Oak Street, Champaign, IL

| | | | | |
|------|-----------------|----------|------------------------------------|----|
| 2179 | White | Morgan | Sustainability | SP |
| 2021 | McGuire | James | F&S Campus Svcs Stores & Receiving | ST |
| 0177 | Santos Escorcia | Josue | F&S Campus Svcs Stores & Receiving | ST |
| 3160 | Prasad | Sarthak | Construction Projects | TD |
| 0812 | DeLorenzo | Stacey | Transportation Demand Management | TD |
| 2112 | Varney | Peter | F&S Fleet Ops | TS |
| 7535 | Bauer | Robbie | Utility Distribution Engineering | UD |
| 3483 | Colacicco | Frank | Utility Distribution Engineering | UD |
| 3370 | Girini | Sushanth | Utility Distribution Engineering | UD |
| 3795 | Mahajan | Shreya | Bldg Maintenance Crafts/Trades | WA |
| 4077 | Hulse | Daphne | F&S Administration | WA |

BUILDING EMERGENCY ACTION PLAN

Physical Plant Services Building u0198 / 1501 South Oak Street, Champaign, IL

Procedures to be followed by employees who remain to operate critical plant operations before they evacuate;

Employees who may remain to shut down critical operations before evacuating

Certain equipment and processes must be shut down in stages or over time. In other instances it is not possible or practical for equipment or certain process to be shut down under certain emergency situations. This condition, which is not unusual for certain large manufacturers operating complex processes, is not typical of small enterprises that normally can turn off equipment or utilities if necessary and evacuate. However some small enterprises may require designated employees remain behind briefly to operate fire extinguishers or shut down gas and/or electrical systems and other special equipment that could be damaged if left operating or create additional hazards to emergency responders (such as releasing hazardous materials).

Each employer must review their operation and determine whether total and immediate evacuation is possible for various types of emergencies. The preferred approach, and the one most often taken by small enterprises, is immediate evacuation of all their employees when the evacuation alarm is sounded.

If any employees will stay behind, the plan must describe in detail the procedures to be followed by these employees. All employees remaining behind must be capable of recognizing when to abandon the operation or task and evacuate themselves before their egress path is blocked. In small establishments it is common to include in your plan locations where utilities (such as electrical and gas) can be shut down for all or part of the facility either by your own employees or by emergency response personnel.

Staff Required for Shutdown during Evacuation

| Name | Office Phone | Cell | Critical Actions Required |
|------|--------------|------|---------------------------|
| N/A | | | |
| | | | |
| | | | |
| | | | |
| | | | |
| | | | |
| | | | |
| | | | |
| | | | |








u0198 PPSB 03-23

Final Audit Report

2023-03-24

| | |
|------------------------------|--|
| Created: | 2023-03-24 |
| By: | Peyton Childress (peytonc@illinois.edu) |
| Status: | Signed |
| Transaction ID: | CBJCHBCAABAAuRuy0tRxMmzehiqL3XrOHAeUIOJbDXfm |
| Number of Documents: | 1 |
| Document page count: | 30 |
| Number of supporting files: | 0 |
| Supporting files page count: | 0 |

"u0198 PPSB 03-23" History

-  Document created by Peyton Childress (peytonc@illinois.edu)
2023-03-24 - 1:46:48 PM GMT
-  Document emailed to Brenda Houy (bhoy@illinois.edu) for signature
2023-03-24 - 1:47:54 PM GMT
-  Email viewed by Brenda Houy (bhoy@illinois.edu)
2023-03-24 - 2:05:46 PM GMT
-  Agreement viewed by Brenda Houy (bhoy@illinois.edu)
2023-03-24 - 2:07:29 PM GMT
-  Brenda Houy (bhoy@illinois.edu) authenticated with Adobe Acrobat Sign.
2023-03-24 - 2:07:46 PM GMT
-  Document e-signed by Brenda Houy (bhoy@illinois.edu)
Signature Date: 2023-03-24 - 2:07:46 PM GMT - Time Source: server
-  Agreement completed.
2023-03-24 - 2:07:46 PM GMT

Names and email addresses are entered into the Acrobat Sign service by Acrobat Sign users and are unverified unless otherwise noted.

