

# Just Like Starting Over (With ReADY Space)

Presented By: Eric Hougen

 +  +  = IWMS

**AssetWORKS**  
Integrated Workplace Management Systems

















**FOR IMMEDIATE RELEASE**

## **Assetworks LLC Announces HBO Collaboration**

*ReADY Space Featured in Game of Thrones Season 8*

***San Antonio, TX — April 1, 2019*** — Today at the Assetworks Global Headquarters,

Assetworks the appearance of ReADY Space product placement in Game of Thrones Season 8

episodes





# ReADY Space Goals

- Relieve administrative burden through self service
- Crowd source space data
- Awesome space survey
- Best of class technology



# Space Management 101

- Classification of Institutional Space by:
  - Room type
  - Organizational Occupant
  - Space type
  - Employee Occupant
  - Usage
  - Grants
  - Grant Employees
  - Program
- Aggregate views can inform space planning, evaluation of space efficiency, F&A rate proposals

# Space Information Questions

- Where is everyone?
- Where is everything?
- Is there the right amount of the right sort of space to meet institutional goals?



# Space Management Best Practices

- Space committee
- Space policies
- *Current* occupancy data
- Open data
- Shared responsibility for data accuracy

# Municipal Property Management 101

- 000s of properties over a large geographic area
- Real Estate functions like space planning
- Emergency situations like finding City property near an active fire



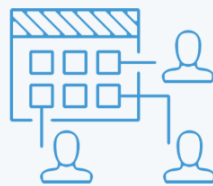
# What is ReADY?

- Configurable request application
- Reach 000's of people
- Low training expectation
- SSO authentication, auto provisioning
- Designed for Mobile
- Workflow and Comment Stream

## Space



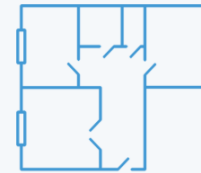
Explore



Space Planning



Search Space Data



Floor Plans

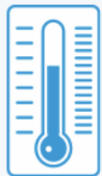


Space Survey

## Facilities Services



Lighting and Power



Temperature



Clean



Appliance



Pest



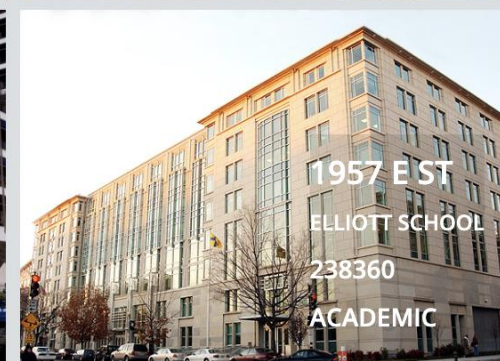
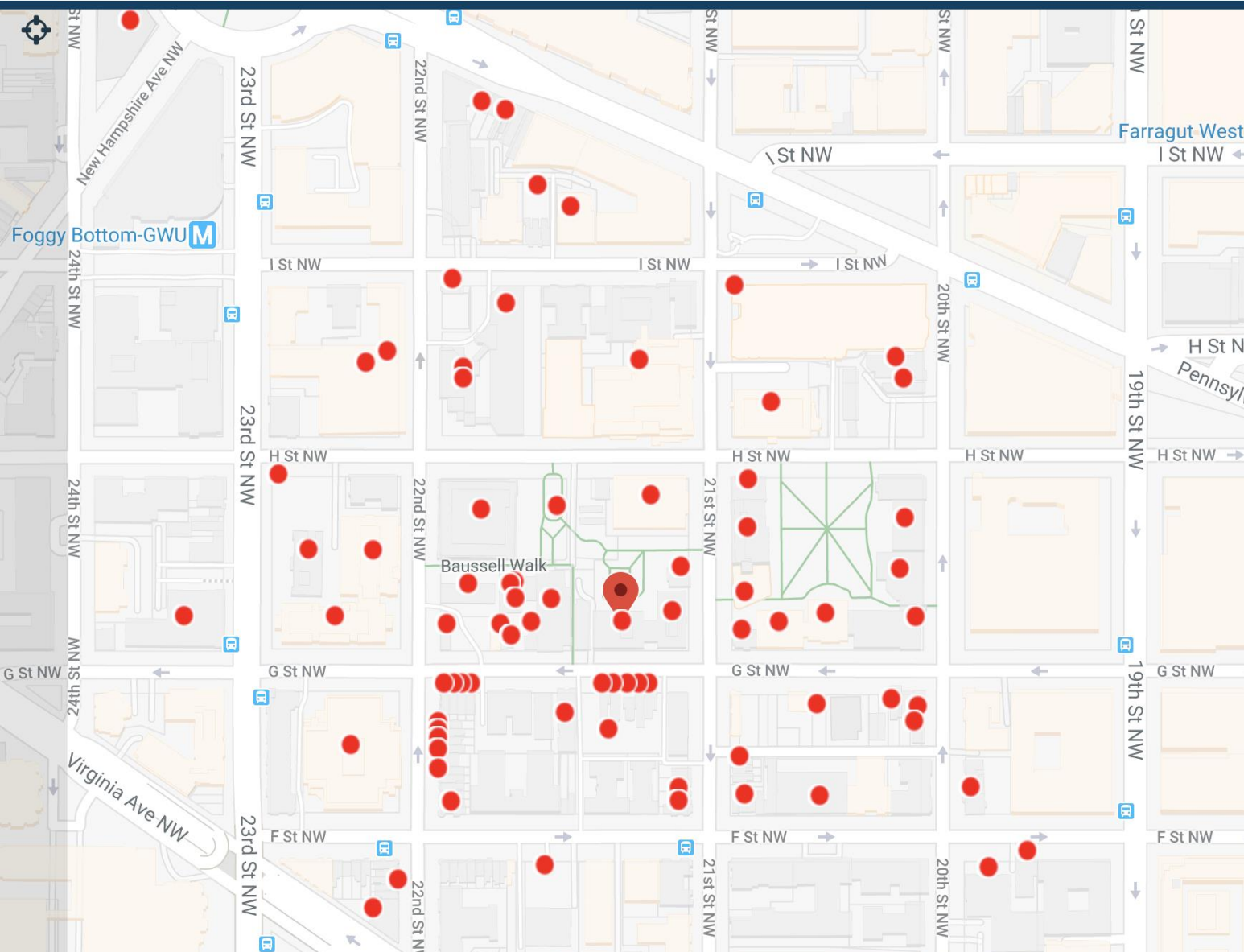
Window, Blinds, Screens



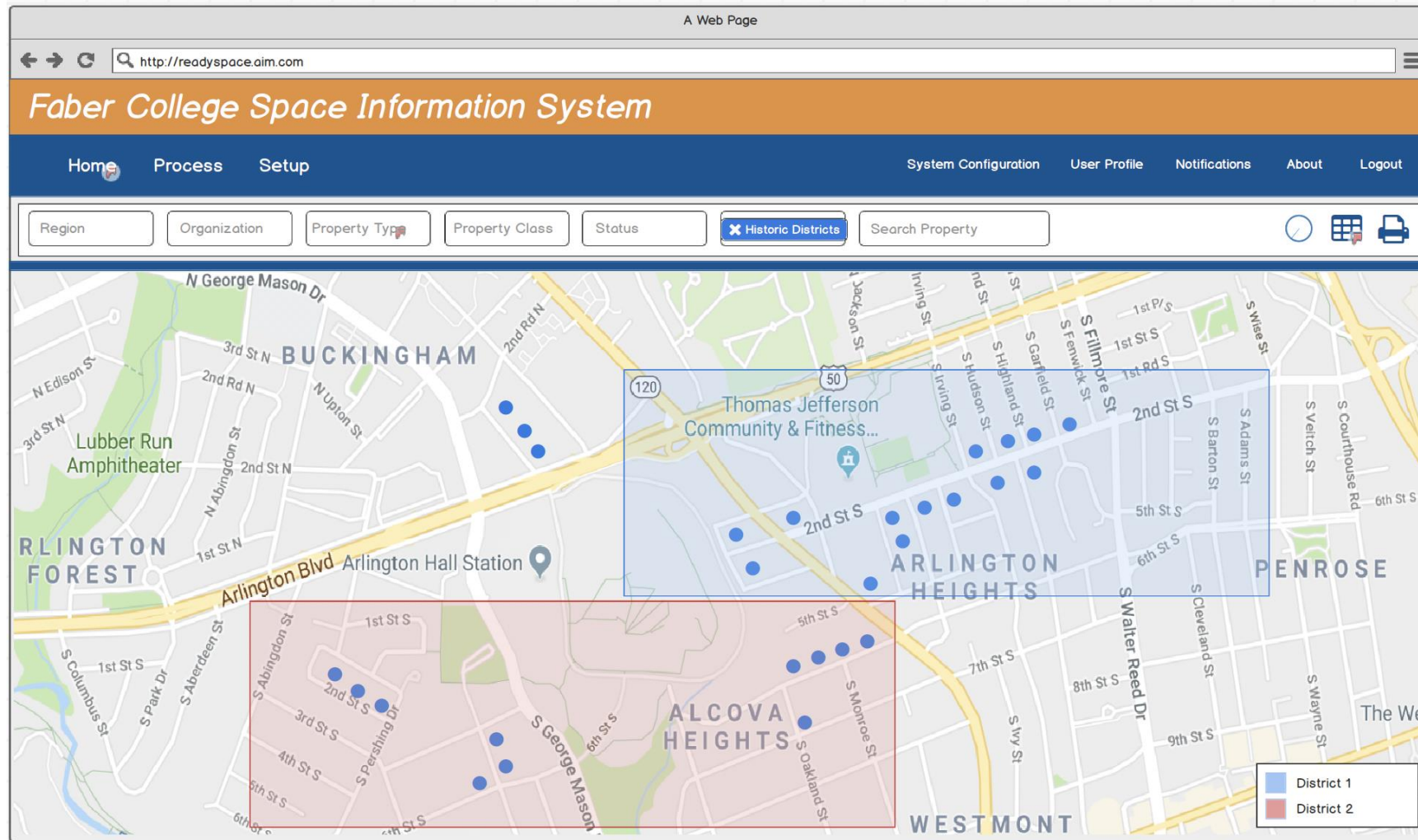
Furniture Repair





[More Filters](#)
[Clear Filters](#)


# GIS data





# Search Space Data

The screenshot shows a web browser window with the URL `http://readyspace.aim.com`. The page title is "Faber College Space Information System". The navigation bar includes links for Home, Process, Setup, System Configuration, User Profile, Notifications, About, and Logout. The main content area features a search interface with three tabs: "Search by Property Name or Code", "Search for Properties" (which is selected and highlighted in orange), and "Search for Locations". Below the tabs is a "More Filters" section with several dropdown menus for Property, Facility, Organization, Property Class, Property Type, and Status. At the bottom of the search area is an "Advanced Search" link and a large orange "Search" button.

Search by Property Name or Code   Search for Properties   Search for Locations

More Filters

Property

Facility

Organization

Property Class

Property Type

Status

Advanced Search

Search



# Faber College Space Information System

[Home](#) [Process](#) [Setup](#)[System Configuration](#)[User Profile](#)[Notifications](#)[About](#)[Logout](#)

## Properties

[Define columns](#) Show  entriesSearch: 


Property	Description	Address	City	State	Type
1900 F ST	Thurston Hall	1900 F ST NW	Washington	D.C.	Academic
1922 F ST	Old Main	2023 G ST NW	Washington	D.C.	Academic
2023 G ST	Bell Hall	1922 F ST NW	Washington	D.C.	Academic
1957 E ST	Elliot School	1957 E ST NW	Washington	D.C.	Academic
1918 F ST	Faculty Club	1918 F ST NW	Washington	D.C.	Academic

Showing 1 to 5 of 5 entries

[Previous](#) [1](#) [2](#) [Next](#)

# Property Detail

A Web Page
http://wmspace.slm.com
Faber College Space Information System
Home Process Setup System Configuration User Profile Notifications About Logout



Thurston Hall - 1900 F ST
Close

Largest freshman residence hall. Thurston Hall houses 1,116 Freshman men and women in doubles, triples, quads, fives and sixes

1900 F ST NW  
Washington, DC 20052

### Building Facts

Date Built	1926
Property Type	Residential
D.C. Historic landmark	Yes
Parking Spots	Parking Spots
LEED Level	Silver
County	LA County
Square Feet	14020
Parcel Number	4416015901
Building Name	Vocant Land
Council District	11
Business Improvement District	None
Area Planning Commission	None
Parcel Square Footage	9468

[>> See More](#)

### Square feet

Assignable Square Feet	###,###
Rentable Square Feet	###,###
Usable Square Feet	###,###
Nonassignable Square Feet	###,###
Gross Square Feet	###,###

### Building Contacts

Property Manager  
John Rolis  
jrolis@gwu.edu  
703-444-4443

Emergency Contact  
Shawn Jackson  
sjacks@gwu.edu  
202-994-4443

### Organizational Occupancy

Organization	Percentage Occupancy
180502 Biology	60%
533022 Chemistry	20%
401501 Physics	20%

### Floors and Rooms

	Floor Plans	Rooms
B Basement	65	65
1 First Floor	65	65
2 Second Floor	65	65
3 Third Floor	65	65
4 Fourth Floor	65	65
5 Fifth Floor	65	65

[>> See More](#)

### Actions

- Key Request
- Event Reservation
- Maintenance Request

### Stack Plan

B	101001	621824	621824	
1	101001	621824	621824	621824
2	101001	621824	621824	
3	101001	621824	621824	
4	101001	621824	621824	
5	101001	621824		

Label Label Label
Label Label Label
Label Label Label
Label Label Label
Label Label Label
Label Label Label

## Location Detail

Employee Occupancy - Who works in this room?			<a href="#">Edit</a>
Employee	Start Date	Percentage Occupancy	
xxxx2841 Jill Smith	##/##/##	60	
xxxx2243 Frank Davis	##/##/##	20'	
xxxx4234 Terrell Johnson	##/##/##	20'	

A Web Page

http://readyspace.sim.com

## Faber College Space Information System

Home Process Setup System Configuration User Profile Notifications About Logout

### Rooming

#### 1900 F ST - Thurston Hall - 101

Square feet	###,###
Location Type	###,###
Space Type	###,###
Status	Active
Capacity	#
UDF01	Text
UDF02	Text
UDF03	Text
UDF04	Text
UDF05	Text

>> See More

#### Org Occupancy - What units are in the room?

Edit

Organization	Start Date	Percentage Occupancy
180502 Biology	##/##/##	60%
53022 Chemistry	##/##/##	20%
401501 Physics	##/##/##	20%

#### Location Contacts

Property Manager  
John Ralls  
jralls@gwu.edu  
703-444-4443

Emergency Contact  
Shawn Jackson  
sjacks@gwu.edu  
202-994-4443

#### Employee Occupancy - Who works in this room?

Edit

Employee	Start Date	Percentage Occupancy
xxxx2241 Jill Smith	##/##/##	60%
xxxx2243 Frank Davis	##/##/##	20%
xxxx4234 Tennel Johnson	##/##/##	20%

#### Usage - What happens in this room?

Edit

##### 180502 - Biology

Usage	Start Date	Percentage Usage
2.0	##/##/##	60%
Sponsored Research		
1.0 Instruction	##/##/##	40%

##### 180502 - Biology

Usage	Start Date	Percentage Usage
2.0	##/##/##	60%
Sponsored Research		

#### Program Occupancy - What Field of Study is in this room?

Edit

Program	Start Date	Percentage Occupancy
03.0205 WATER, WETLANDS, AND MARINE RESOURCES MANAGEMENT	##/##/##	60%
03.0206 LAND USE PLANNING AND MANAGEMENT/DEVELOPMENT	##/##/##	20%
04.0601 LANDSCAPE ARCHITECTURE (BS, BSLA, BLA, MSLA, PLA, PHD)	##/##/##	20%

#### Grants - What sponsored research happens in this room?

Edit

Grant	Start Date	Percentage Occupancy
03.0205 WATER, WETLANDS, AND MARINE RESOURCES MANAGEMENT	##/##/##	60%
03.0206 LAND USE PLANNING AND MANAGEMENT/DEVELOPMENT	##/##/##	20%
04.0601 LANDSCAPE ARCHITECTURE (BS, BSLA, BLA, MSLA, PLA, PHD)	##/##/##	20%

# Search Floor Plans

- Autodesk Forge Viewer
  - 2D CAD and Revit files in a web browser
  - Intelligent to tie room to AiM location and space data
  - Room shading and labeling using AIM location and space data





Jackson Geological Sciences Bldg

Jackson Geological Sciences Bldg. (JGB)

Anim pariatur cliche reprehenderit, enim eiusmod high life accusamus terry richardson ad squid. 3 wolf moon officia aute, non cupidatat skateboard dolor brunch. Food truck quinoa nesciunt laborum eiusmod. Brunch 3 wolf moon tempor, sunt aliqua put a bird on it squid single-origin coffee nulla assumenda shoreditch et. Nihil anim keffiyeh helvetica, craft beer labore wes anderson cred nesciunt sapiente ea proident. Ad vegan excepteur butcher vice lomo. Leggings occaecat craft beer farm-to-table, raw denim aesthetic synth nesciunt you probably

Shade and Label

Requests 8 Work Orders 2 Assets 4

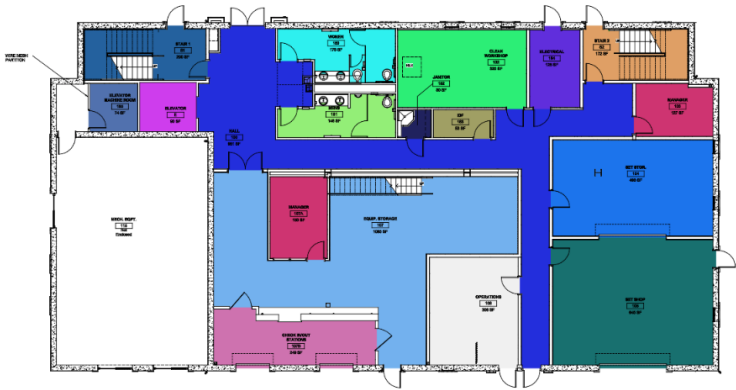
Shade

- ☐ Organization Occupancy - Institution
- ☐ Organization Occupancy - Department
- ☐ Organization Occupancy - Organization
- ☐ Location Type

Label

- ☐ Organization Occupancy - Institution
- ☐ Organization Occupancy - Department
- ☐ Organization Occupancy - Organization
- ☐ Location Type

Floor E1 A01 - First Floor Plan



Settings

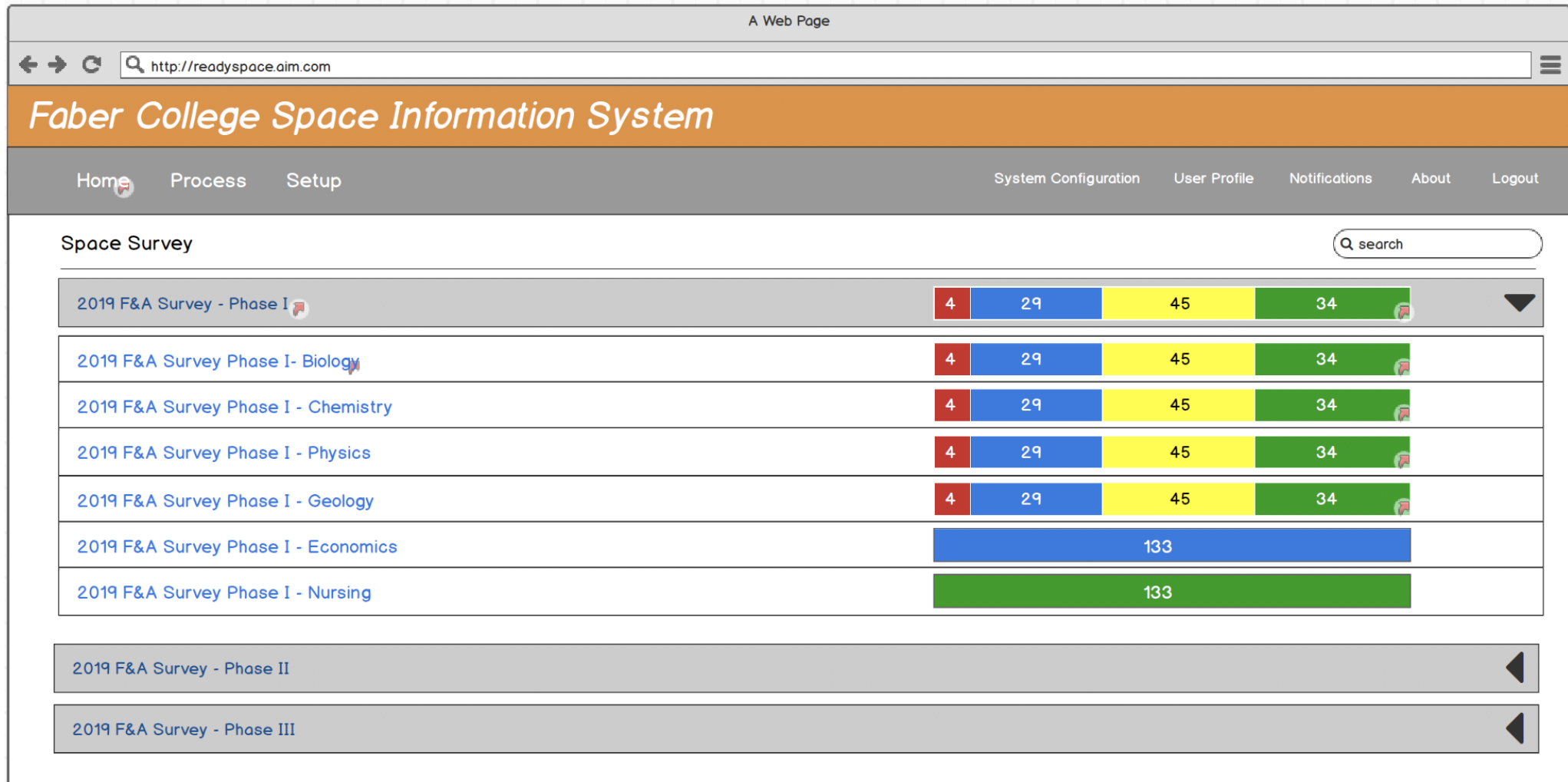
Locations

Legend	Location	Area	
	HALL	951 ft2	Action
	CLEAN WORKSHOP	320 ft2	Action
	MANAGER	127 ft2	Action
	SET STOR.	493 ft2	Action
	SET SHOP	645 ft2	Action
	OPERATIONS	306 ft2	Action
	EQUIP. STORAGE	1085 ft2	Action
	MECH. EQPT.	0 ft2	Action
	WOMEN	175 ft2	Action
	MENS	146 ft2	Action
	JANITOR	30 ft2	Action
	IDF	53 ft2	Action
	ELECTRICAL	125 ft2	Action

# Space Survey

- Why Survey?
  - State BOG report
  - Federal Grants F&A proposal
  - Where is everyone?
  - Where is the unoccupied space?
- Management tools to monitor survey progress
- Configurable survey template to address different survey goals
- Survey generation tools to deploy lots of surveys
- Copy survey entries to multiple rooms

# Space Survey Management View



# Survey Room List

A Web Page

<http://readyspace.aim.com>

Faber College Space Information System

Home
Process
Setup
System Configuration
User Profile
Notifications
About
Logout

Surveys

Status
Property
Location Type
Locked
Organization
PI

Show
10
entries
search

				Building	Room	Location Type
+				1001 - Thurston Hall	101 - OFFICE	310 - OFFICE
+				1001 - Thurston Hall	102 - CONFERENCE ROOM	315 - OFFICE SERVICE
+				1001 - Thurston Hall	103 - OFFICE	310 - OFFICE
+				1001 - Thurston Hall	104 - PANTRY	315 - OFFICE SERVICE
+				1001 - Thurston Hall	105 - OFFICE	310 - OFFICE
+				1002 - Bell Hall	106 - OFFICE	310 - OFFICE
+				1002 - Bell Hall	107 - OFFICE	310 - OFFICE

Showing 1 to 10 of 10 entries
Previous
1
2
Next



# Survey Room Detail

Org Occupancy - What units are in the room?

	Start Date	End Date	Percentage Occupancy
180502 Biology	##/##/##	<div><div></div></div>	<div><div></div>80</div>
533022 Chemistry	##/##/##	<div><div></div></div>	<div><div></div>10</div>
401501 Physics	##/##/##	<div><div></div></div>	<div><div></div>10</div>

+ Add Organization

A Web Page

http://reedyspace.aim.com

Faber College Space Information System

Home Process Setup

System Configuration User Profile Notifications About Logout

Rooms 1 of 20 Submit

1900 F ST - Thurston Hall - 101

Square feet ###,###

Location Type ###,###

Space Type ###,###

Status Active

Capacity #

8088  
265 sf

8090  
157 sf

8092  
157 sf

C8002  
194 sf

8095  
71 sf

Org Occupancy - What units are in the room?

	Start Date	End Date	Percentage Occupancy
180502 Biology	##/##/##	<div><div></div></div>	<div><div></div>80</div>
533022 Chemistry	##/##/##	<div><div></div></div>	<div><div></div>10</div>
401501 Physics	##/##/##	<div><div></div></div>	<div><div></div>10</div>

+ Add Organization

double-click to edit

Employee Occupancy - Who works in this room?

	Start Date	End Date	Percentage Occupancy
xxxx2841 Jill Smith	##/##/##	<div><div></div></div>	<div><div></div>80</div>
xxxx2243 Frank Davis	##/##/##	<div><div></div></div>	<div><div></div>10</div>
xxxx4234 Terrell Johnson	##/##/##	<div><div></div></div>	<div><div></div>10</div>

+ Add Employee

Usage - What happens in this room?

180502 - Biology

Usage	Start Date	Percentage Usage
2.0 Sponsored Research	##/##/##	<div><div></div>80</div>
1.0 Instruction	##/##/##	<div><div></div>10</div>

180502 - Chemistry

Usage	Start Date	Percentage Usage
2.0 Sponsored Research	##/##/##	<div><div></div>10</div>

Principal Investigator - What PI(s) are in the room?

	Start Date	End Date
G10006463 Samuel Simmons	##/##/##	<div><div></div></div>

+ Add Principal Investigator

[www.Assetworks.com/IWMS](http://www.Assetworks.com/IWMS)

© 2018 AssetWorks LLC. Proprietary and Confidential.

AssetWORKS  
IWMS

# Faber College Space Information System

## Space Survey Template

search

Organizational and Employee Occupancy	Copy	Edit	Edit Workflow	<input checked="" type="checkbox"/>
F&A Survey	Copy	Edit	Edit Workflow	<input checked="" type="checkbox"/>

+ Create Template

# Survey Definition

A Web Page

http://readyspace.aim.com

## Faber College Space Information System

Home Process Setup System Configuration User Profile Notifications About Logout

F&A Survey Cancel Done

Survey Type

☐ Department ☐ Organization ☐ Property

Sections Load

Organizational Occupancy	Remove
Employee Occupancy	Remove
Usage	Remove
Principal Investigator	Remove
Grant	Remove
Grant Occupants	Remove
User Defined Fields	Remove

Location Type Scope Load

Location Type	Remove
220 OPEN LABORATORY	
225 OPEN LABORATORY SERVICE	
250 RESEARCH/NONCLASS LABORATORY	
251 COMPUTATIONAL RESEARCH LAB	
255 RESEARCH/NONCLASS LABORATORY SERVICE	
256 COMPUTATIONAL RESEARCH LAB SERVICE	
310 OFFICE	
315 OFFICE SERVICE	

# Survey Section Definition

The screenshot shows a web browser window with the address bar displaying `http://readyspace.aim.com`. The page title is "Faber College Space Information System". The navigation bar includes links for Home, Process, Setup, System Configuration, User Profile, Notifications, About, and Logout. The main content area is titled "Employee Occupancy" and contains a "Survey Instructions" section and an "Options" section.

**Employee Occupancy** [Cancel] [Done]

**Survey Instructions**

**Validating Occupancy Information**

- For space with uses **250 Research/Nonclass Labs** and **255 Research/Nonclass Lab Services**, the room occupancy information needs to be verified and/or completed.
  - Occupant information from the F&A 2012 space survey (except for student help) has been compared against current HR data.
  - Ensure that the list includes ALL personnel who occupied the room on a regular basis during FY2016
    - Faculty
    - Research staff
    - Postdocs
    - Technicians
    - Graduate students • Visiting scientists

**Options** [double-click to edit]

- ☒ Show Start Date
- ☒ Show End Date
- ☒ Show Percentage Allocation
- ☒ Require Percentage Allocation to total 100%
- ☒ Mask Primary Key value



# Survey Generator

A Web Page

← → ↻

http://readyspace.aim.com

☰

Faber College Space Information System

Home Process Setup

System Configuration User Profile Notifications About Logout

System Setup Authentication Users Roles Responsibilities Alert Messages Notiffcations Dynamic Data Workflow Business Rules Space Fields Survey Template Survey Generator

Space Survey Generator

Q search

F&A Survey 2019 - Phase 1	Progress	Copy	Edit
F&A Survey 2019 - Phase 2	Progress	Copy	Edit
F&A Survey 2019 - Phase 3	Generate	Copy	Edit
Corcoran Gallery Occupancy Survey	Generate	Copy	Edit

+ Create Survey

# Survey Generate Definition

A Web Page

http://readyspace.aim.com

## Faber College Space Information System

Home Process Setup System Configuration User Profile Notifications About Logout

**Title** Cancel Done

F&A Survey 2019 - Phase 1

**Survey Template**

Organizational and Employee Occupancy  
F&A Survey 2018

**Survey Active Date**  
/ /

**Survey Close Date**  
/ /

**Survey Period Start Date**  
/ /

**Survey Period End Date**  
/ /

**Property Scope** Load

Property ID	Property Description	Remove
1021	Thurston Hall	
1036	Old Main	
1072	Lisner Hall	
1045	Bell Hall	

# Questions



Eric Hougen

[eric.hougen@assetworks.com](mailto:eric.hougen@assetworks.com)

703-867-2933