



# Takin' Care of Business (With ReADY Vendor)

Presented By: Glenn Adams



# Meet Glenn Adams

AssetWorks Director of Product Management



## About Glenn

Glenn Adams is the Director of Product Management at AssetWorks and is responsible for the gathering and prioritizing of product requirements, defining the vision for the products, and collaborating with other directors of Sales, Engineering, Marketing and Operations to ensure product goals are met. He received his Management of Information Systems degree from Auburn University after a six-year enlistment in the Navy and has worked in enterprise software for 15 years, 6 of those with AssetWorks.

 GLENN.ADAMS@ASSETWORKS.COM

 Phone: 334-750-5018



# AiM

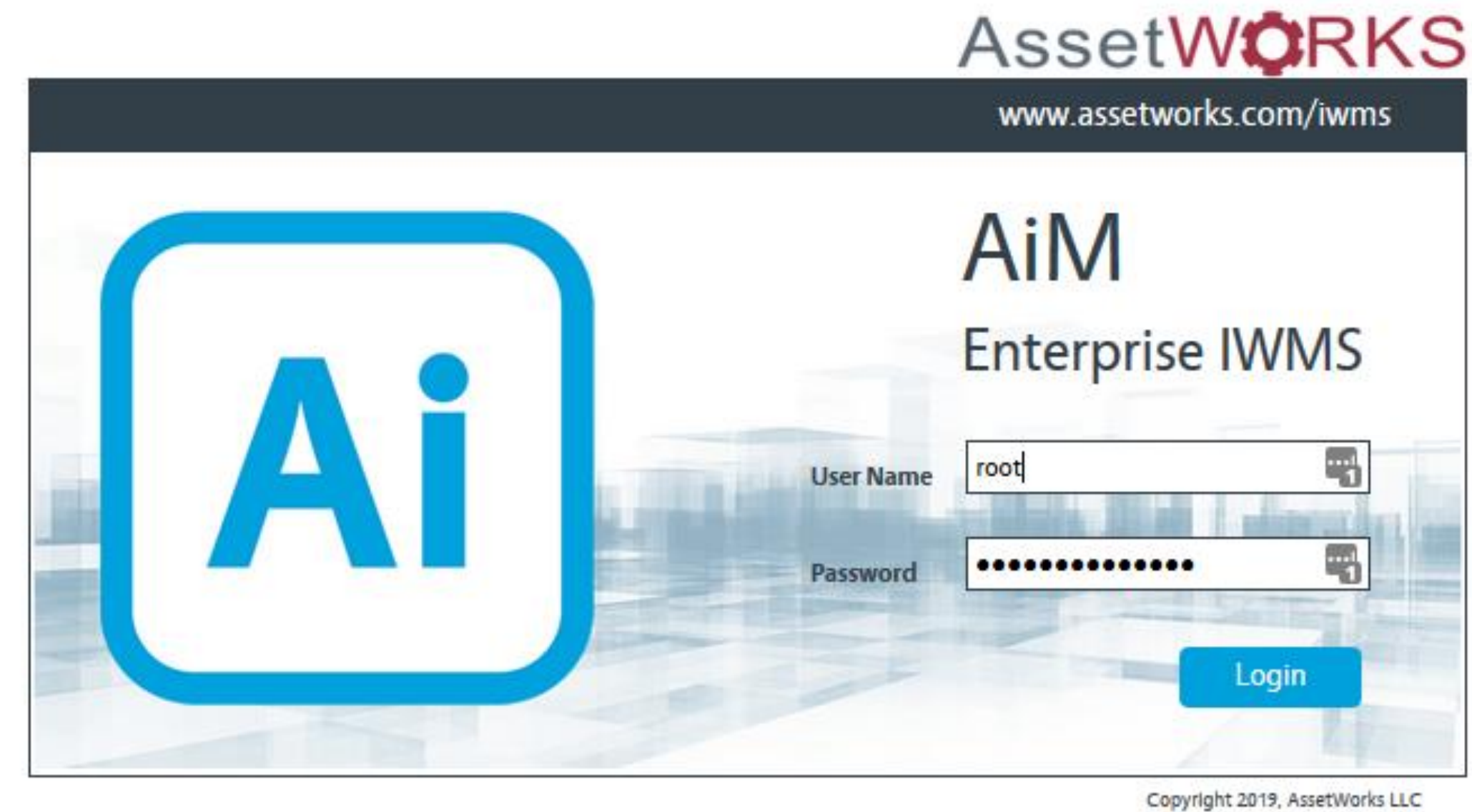
AiM has enjoyed years of success focusing on your back-office personnel

The ERP of Facilities



[www.Assetworks.com/IWMS](http://www.Assetworks.com/IWMS)

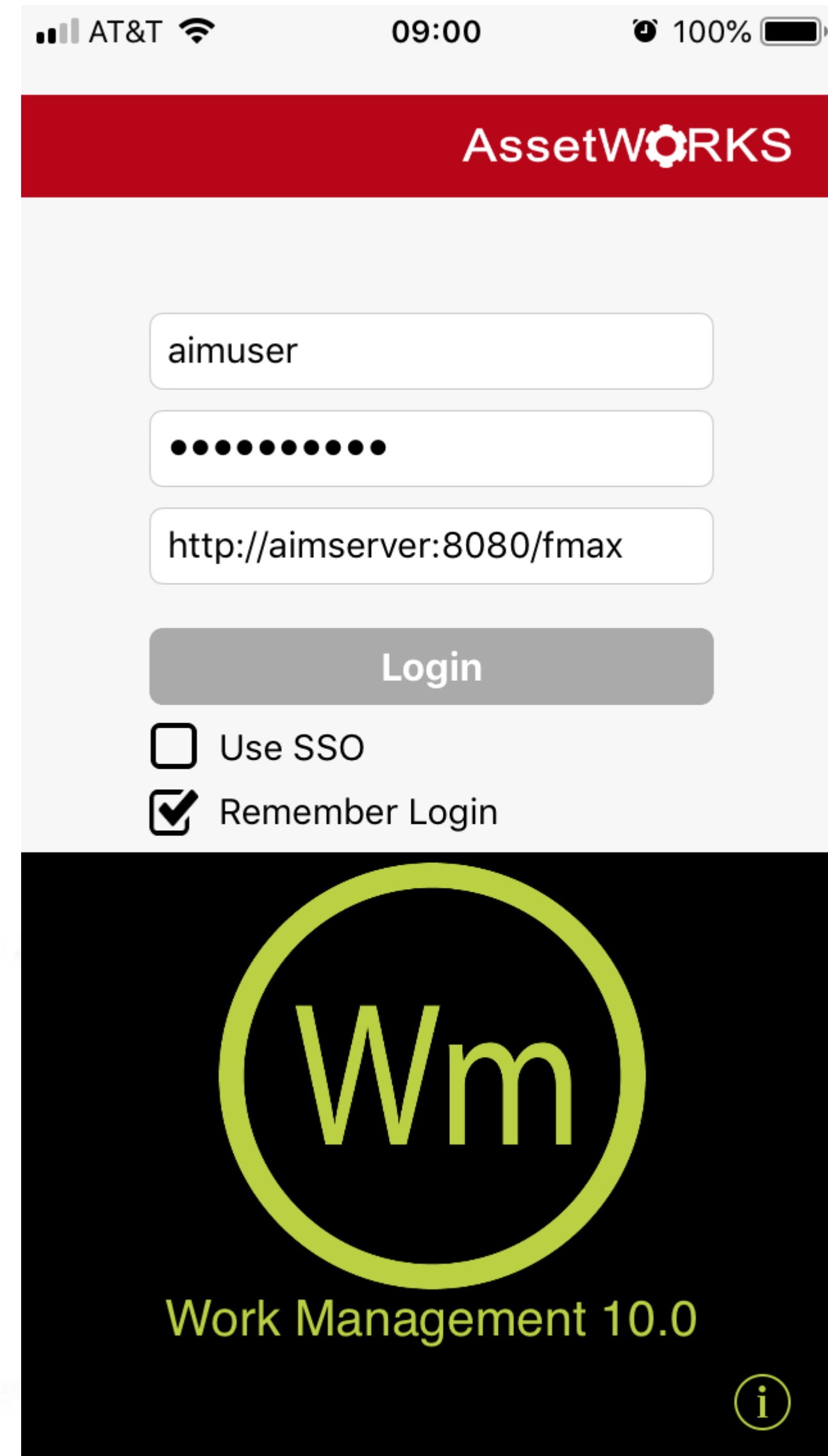
© 2019 AssetWorks LLC. Proprietary and Confidential.



*Asset* 2019  
*World*

# Go

Go is a mobile product line  
focused on the doers in your  
organization



AT&T 09:00 100%

AssetWORKS

aimuser

.....

http://aimserver:8080/fmax

Login

☐ Use SSO

☒ Remember Login

Wm

Work Management 10.0

i



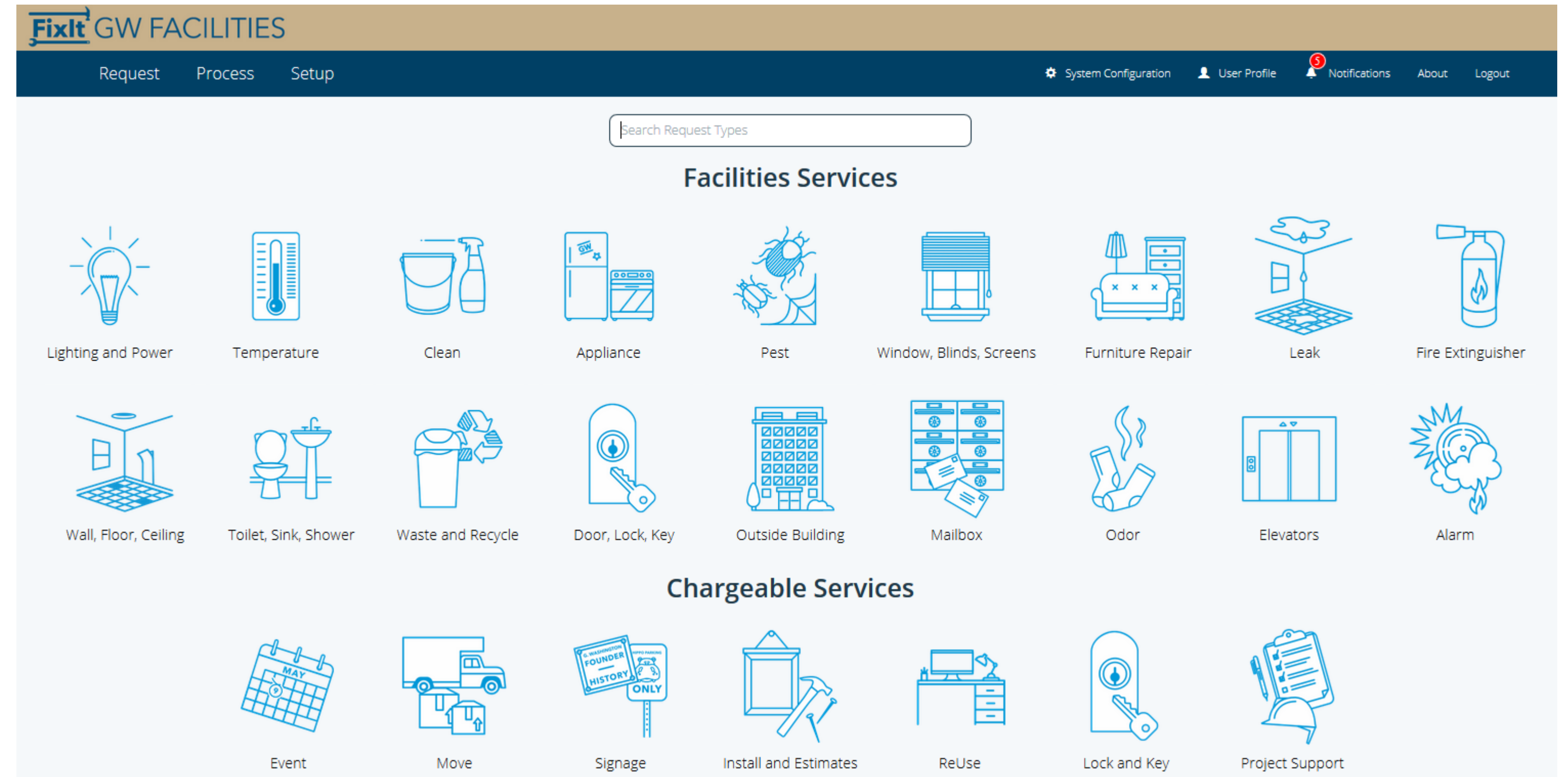
[www.Assetworks.com/IWMS](http://www.Assetworks.com/IWMS)

© 2019 AssetWorks LLC. Proprietary and Confidential.

*Asset* 2019  
*World*

# ReADY

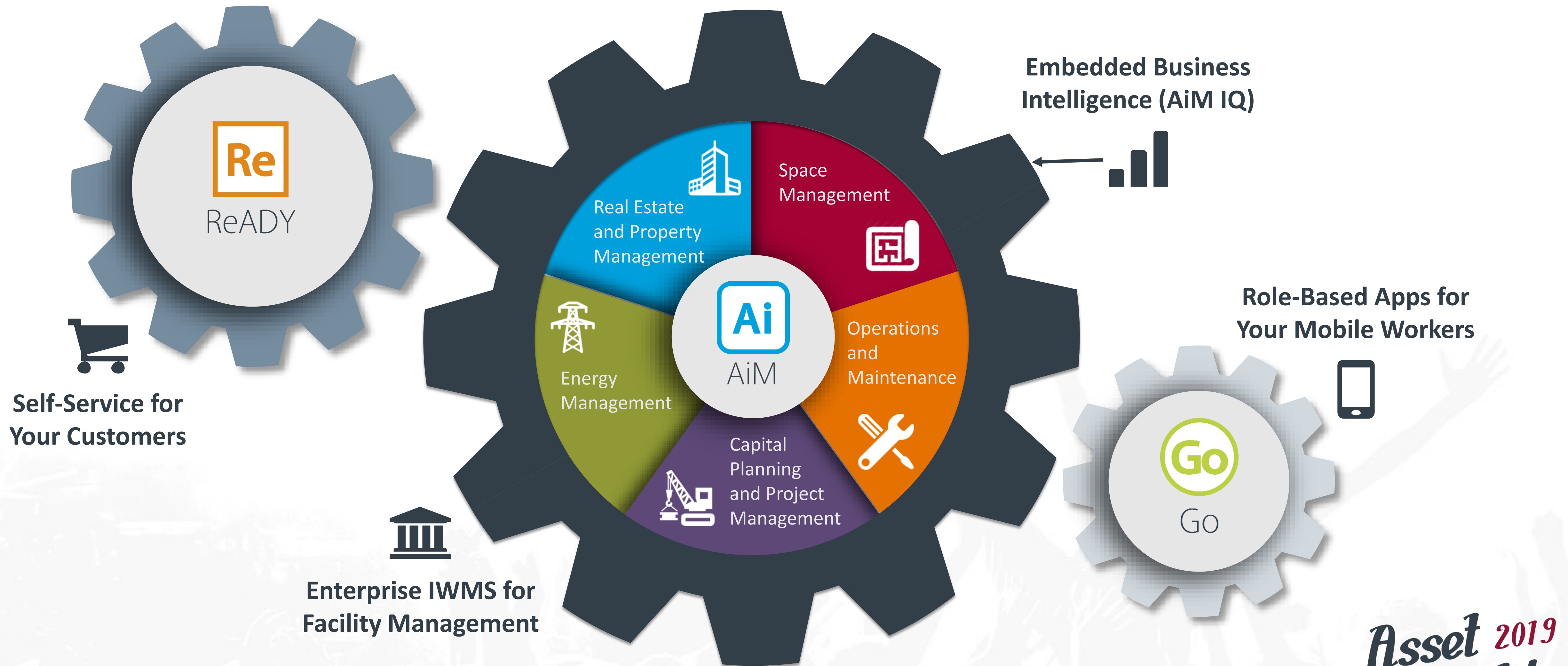
ReADY is an  
**external** facing  
product line focused  
on customer and  
vendor self-service  
interactions



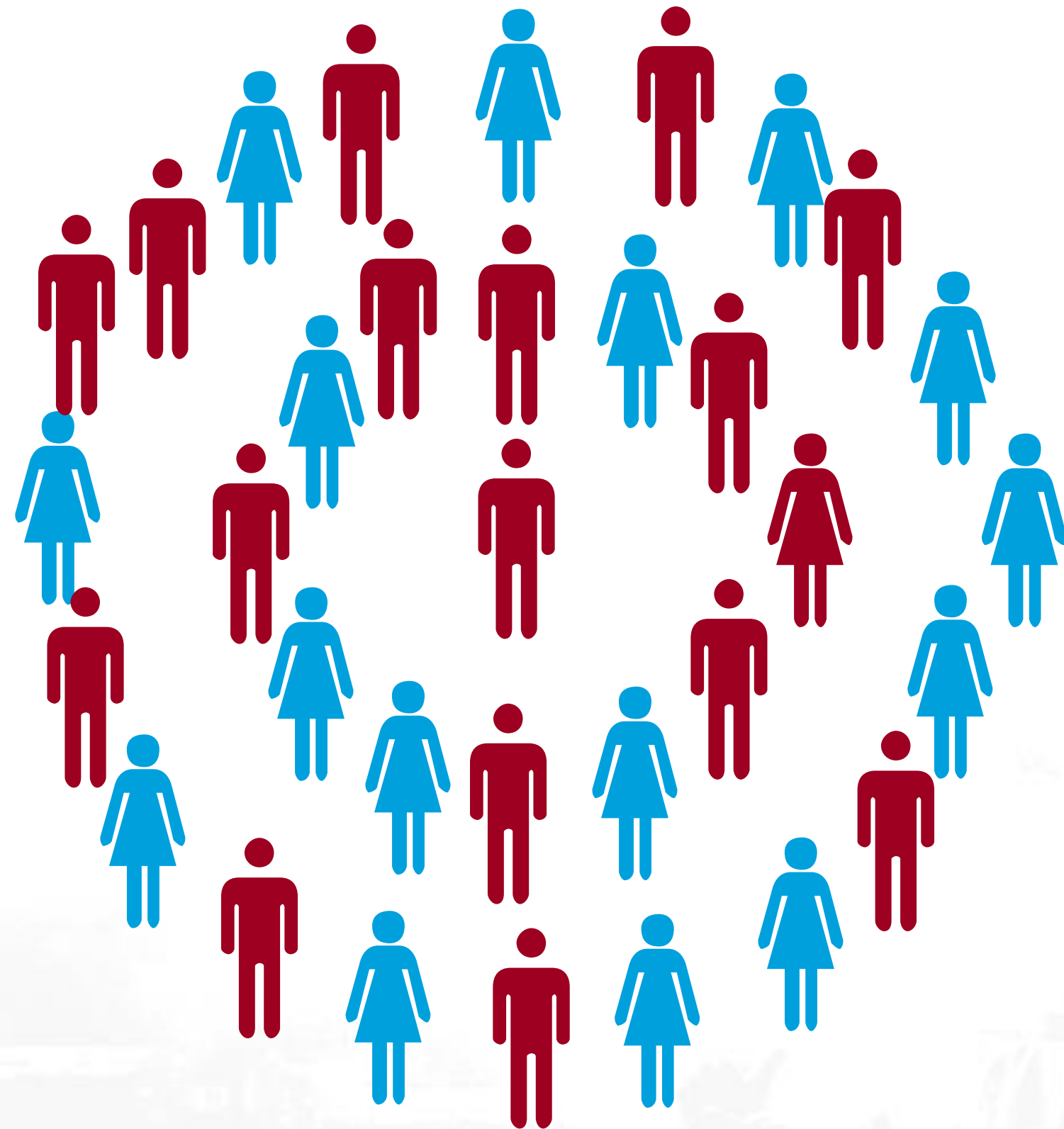


# The AiM Integrated Workplace Management System

The complete end-to-end facilities management solution for the public sector



# Special Interest Group (SIG)



A Special Interest Group (SIG) is formed to drive the features, functionality, and development of an entirely new product.

# ReADY

Five unique products and special interest groups



\* Tentative





# ReADY Core Tenants

Multiple forms of authentication

Minimum training needed for use (self-service)

Notification, authorization, funding (workflow)

Reduce paper forms (flexible design)

Improve and increase communication and collaboration





# Benefits of Participating



## **Influence Design**

The ability to directly influence the features, functionality, and development of this new product



## **Help Determine Scope**

The ability to directly influence the range and scope of capabilities to be included in this new product



## **Impact Priorities**

Anticipating a phased approach... The ability to directly influence what gets rolled out first, second, and so on



## **Collaborate with Other Stakeholders**

The ability to collaborate with other stakeholders, and identify best practices to be incorporated in the new product.







# SIG Three Step Process





# Responsibilities of SIG Members

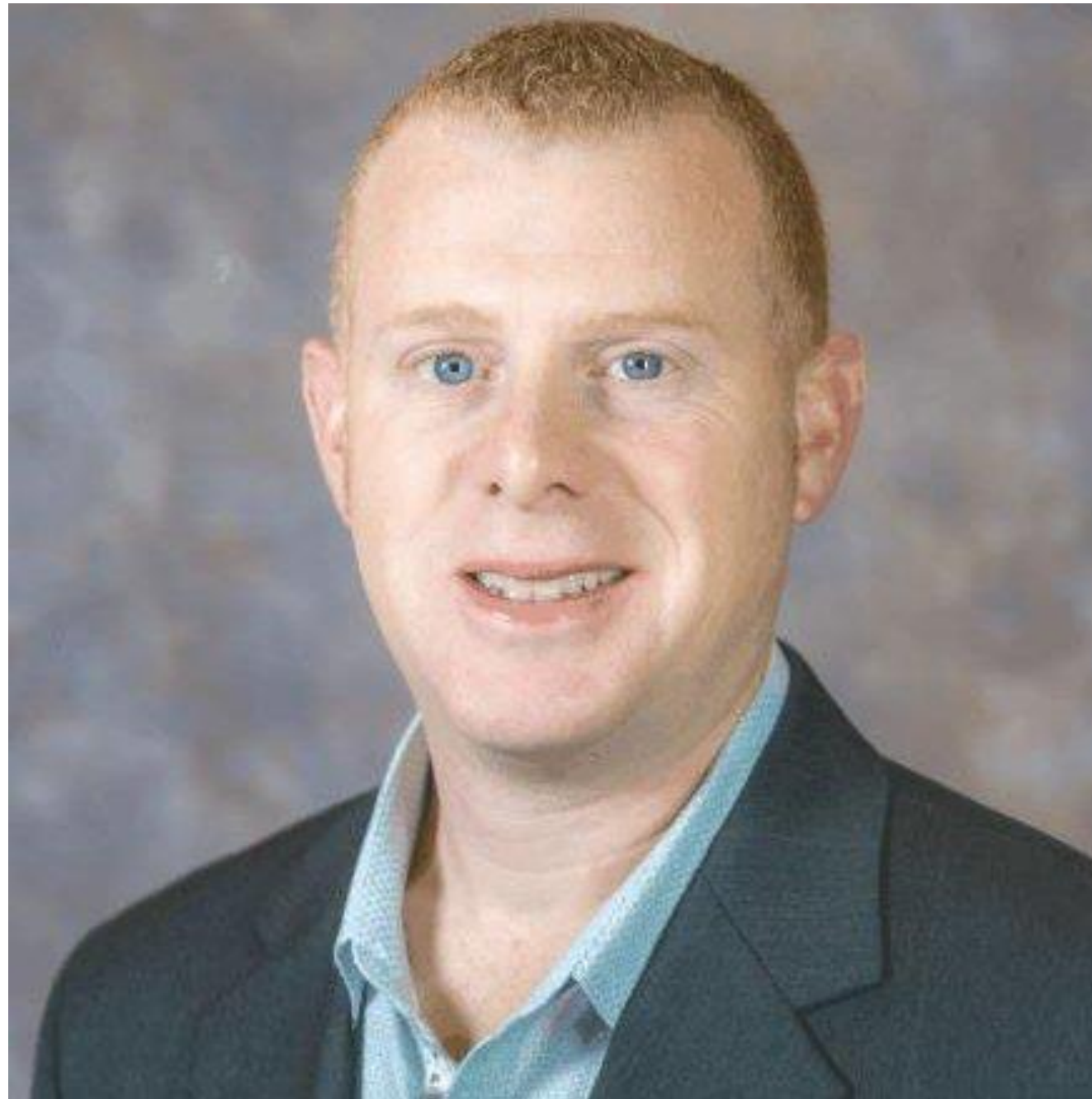


1. Product Status Review Calls
2. Provide Feedback and Testing
3. Conduct Beta Site Evaluation
4. Time Investment ~4hrs/week

**Note: Only 10 customer sites will be joining this team.**

# Keith O'Brien

Vice President of Sales



Email: [keith.obrien@assetworks.com](mailto:keith.obrien@assetworks.com)

Phone: 512-779-5056

# Questions?







# Thank You!

Glenn Adams

AssetWorks Director of Product Management

[Glenn.Adams@AssetWorks.com](mailto:Glenn.Adams@AssetWorks.com)

