



Green GUIDE



Campus Community,



The University of Illinois Urbana-Champaign is charged by our state to enhance the lives of citizens in Illinois, across the nation, and around the world through our leadership in learning, discovery, engagement, and economic development. One of the most important facets of our campus is our enduring commitment to sustainability. Through intersectional, intergenerational climate resiliency, the campus community of tomorrow can continue to prosper and enjoy the extensive network of resources that the university provides.

The first edition of the Green Guide has been designed to highlight opportunities for campus sustainability engagement. Whether you are a student, faculty, staff, or community member, information collated in this guidebook was created with you in mind. This first iteration is intended to be a non-comprehensive, high-level touch point for campus sustainability, and it will continue to improve through community feedback.

This Green Guide is a collaboration between several campus units, including the Institute for Sustainability, Energy, and Environment (iSEE); Student Affairs; and Facilities & Services. The Customer Relations & Communications team provided much of the support to make this guide a reality. Questions and/or feedback can be directed to Daphne Hulse, Zero Waste Coordinator, by emailing fscustomerrelations@illinois.edu.

INSPIRATION

On April 22, 2024, a partnership between the Student Sustainability Leadership Council; Students for Environmental Concerns; Student Sustainability Committee; Illini Union Board; Institute for Sustainability, Energy, and Environment; and Facilities & Services held the inaugural Earth Day Festival, Sustainapalooza. The event featured tabling, live music, food and craft vendors, a clothing swap, and a sustainable art show.

Sustainapalooza is an example of what is possible when students, faculty, staff, and the surrounding community are empowered to work together toward something bigger.

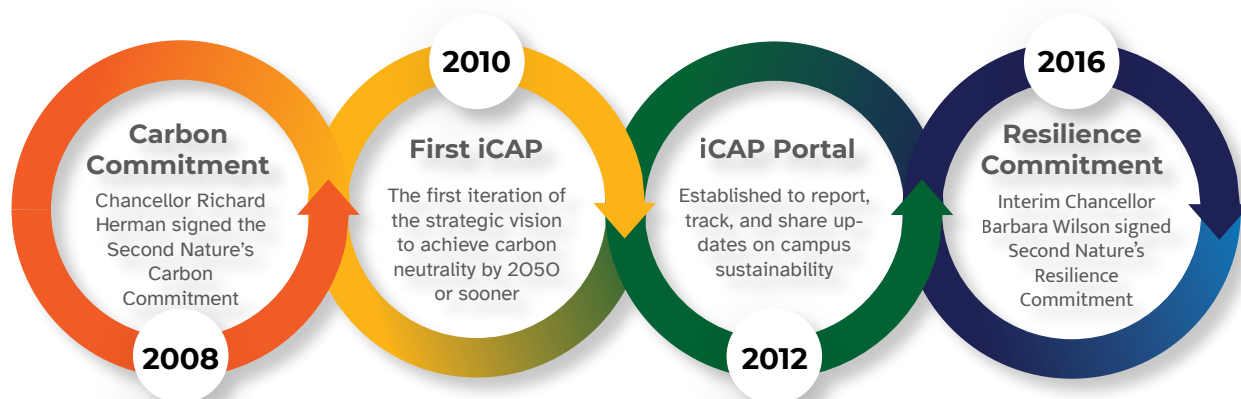
LAND ACKNOWLEDGMENT

As a land-grant institution, the University of Illinois Urbana-Champaign has a responsibility to acknowledge the historical context in which it exists. We are currently on the lands of the Peoria, Kaskaskia, Piankashaw, Wea, Miami, Mascouten, Odawa, Sauk, Meskwaki, Kickapoo, Potawatomi, Ojibwe, and Chickasaw Nations. It is necessary for us to acknowledge these Native Nations and for us to work with them as we move forward as an institution with Native peoples at the core of our efforts.

Contents

Illinois Climate Action Plan	4
The Illinois Climate Action Plan (iCAP) is the campus’ strategic vision toward carbon neutrality by 2050 or sooner.	
iCAP Stewards	5
The Institute for Sustainability, Energy, and Environment; Facilities & Services; and the iCAP Teams work synergistically to advance campus sustainability.	
Campus Programs	6
Explore student-oriented, campus-wide, and educational programming focused on sustainability.	
Student-Led Committees	10
Student-led committees play an integral role in planning events, providing input to university administrators, and leading sustainability efforts across campus.	
Cultural & Resource Centers	11
Student Success, Inclusion & Belonging units ground themselves within the principles of equity, diversity, and community building.	
Sustainability-Focused RSOs	14
From alternative proteins to ecological restoration, to nuclear energy and food recovery, registered student organizations address a variety of niches.	
Sustainable Transportation	17
The university and surrounding communities provide resources to make getting around without owning a car easy and convenient.	
Toward Zero Waste	18
Zero waste considers the entire system of how we make, consume, and dispose of stuff. “Use it up, wear it out, make it do, or do without.”	
Take a Tour	20
Visit the crème de la crème of sustainability accomplishments on the Urbana campus.	
Sixteen Sustainable Steps	22

Illinois Climate Action Plan

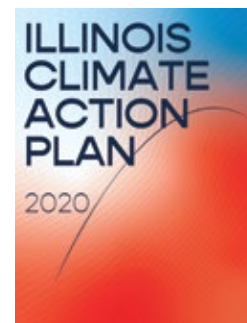


iCAP

The Illinois Climate Action Plan (iCAP) is developed under the Institute for Sustainability, Energy, and Environment (iSEE) and Facilities & Services, with broad stakeholder input and final approval by the chancellor.

On October 20, 2020, Chancellor Robert J. Jones approved and signed the iCAP 2020, the third iteration of the strategic plan. The iCAP commits the campus to carbon neutrality by 2050 and promotes zero waste, biodiversity, sustainable transportation, resource conservation, education, and engagement.

The iCAP 2020 is split into eight themes: energy, transportation, land and water, zero waste, education, engagement, resilience, and implementation. The iCAP 2025 is slated for release in October 2025. Efforts are underway to engage campus stakeholders and update our climate action objectives to reflect our campus's commitment to sustainability.



iCAP TOPICAL TEAMS

iCAP Topical Teams convene to gather information, discuss, and explore solutions to advance iCAP objectives for a specific theme. Teams are composed of students, faculty, and staff with subject matter expertise or interest in the given theme. Teams meet at least once per month during the academic year to provide informed advice on how to progress action toward iCAP objectives. Teams work with university units and departments and supply their findings and recommendations to the iCAP Working Group (iWG), which serves as a liaison to university administrators.

Read the Plan



go.illinois.edu/sustain

Explore the Portal



go.illinois.edu/iCAPupdates

iCAP Stewards

INSTITUTE FOR SUSTAINABILITY, ENERGY, AND ENVIRONMENT

iSEE fosters actionable, interdisciplinary research to tackle the core challenges in sustainability, energy, and the environment. Our commitment extends beyond research; we cultivate value-added and inclusive educational programming that nurtures the next generation of sustainability leaders. We strive to make our campus a leader in sustainability by strategically and collaboratively pursuing opportunities to become carbon neutral, eliminate waste, and sustainably manage our land, water, and other resources.

iSEE furthers sustainability on campus through its stewardship of the iCAP process, management of the iCAP teams, and implementation of three programs to embed sustainability in daily life: the green events, green office, and green chapters programs. Additionally, student programming is offered throughout the school year, including the Illini Lights Out program, trash pickup events, and annual Earth Month activities. iSEE's sustainability minor and an Environmental Leadership Program further prepare students to impact the larger community as they enter the work force equipped with environmental knowledge and tools.

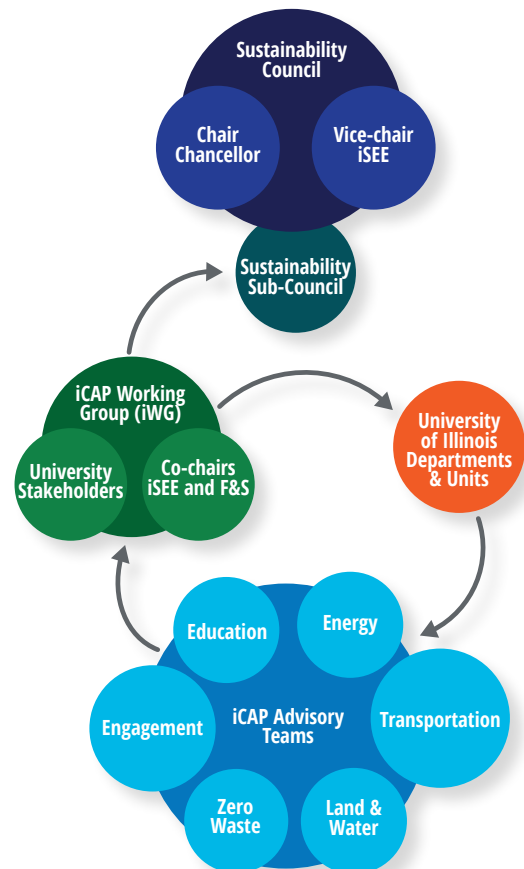
FACILITIES & SERVICES

Facilities & Services (F&S) provides all physical plant, operational, and essential services for sustaining an environment that fosters the research, teaching, and public engagement activities at Illinois:

- Sustainable transportation programming and infrastructure
- Waste management and reduction
- LEED-certified buildings
- Energy efficiency and conservation
- Grounds and landscapes resiliency
- Green stormwater infrastructure

iCAP PROCESS

Flow chart of the interface between iSEE, F&S, the iCAP Teams and iWG, and campus administrators.



iSEE



sustainability.illinois.edu

Facilities & Services



fs.illinois.edu

Campus Programs

Split among student-oriented, campus-wide, and educational programs, here you can explore a variety of sustainability work happening around campus.

STUDENT ORIENTED

CERTIFICATE IN ENVIRONMENTAL WRITING

The Certificate in Environmental Writing (CEW) is for U. of I. undergraduates who want to engage with the latest research in sustainability science and to build their skills in environmental communication.

The CEW teaches students to turn data into narrative by finding the latest scientific research on the environment and communicating that research effectively to the public. Students enrolled in the capstone course may submit their work to the iSEE publication for student environmental writing, *Q Magazine*.



go.illinois.edu/undergradcew



GOOD2GO CARRY-OUT PROGRAM

Request. Return. Repeat. Don't have time to eat in the dining hall? Grab a Good2Go box instead of dining in. Then return the dirty container to any of the dining halls. Developed in response to student requests for "food on the go" to help with their busy schedules, the Good2Go Carry-Out program provides a sustainable solution to fit the need.



go.illinois.edu/carryout



ILLINI LIGHTS OUT

Not in use? Turn off the juice! iSEE's Illini Lights Out program demonstrates the immense energy-saving impact of simply turning off the lights when you leave a classroom, lab, or study space. On a few Friday nights each month, volunteers gather to form mini lights-out brigades; they tour campus buildings recording how many lights are left on (and shutting off as many as they can, of course).



go.illinois.edu/ilo

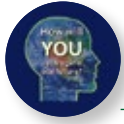


ILLINOIS GREEN FUND

Have an idea for a campus sustainability project? The Illinois Green Fund is currently the largest university sustainability funding pool in North America and is stewarded by the Student Sustainability Committee (SSC), a group of undergraduate and graduate students dedicated to building a more sustainable campus. The fund is financed through the collection of two student-initiated fees, the Cleaner Energy Technologies Fee and the Sustainable Campus Environment Fee. Project proposals can be submitted by students, faculty, or staff.



go.illinois.edu/igf



REIMAGINE OUR FUTURE

The global sustainability crisis is an opportunity for humanity to learn to flourish without compromising the natural systems upon which we depend. Your mission: develop an innovative plan that promotes one or more of the United Nations' Sustainable Development Goals. Your idea could earn you a monetary prize and have an impact on the future!



go.illinois.edu/rof

SUSTAINABILITY LIVING-LEARNING COMMUNITY

Live and learn about diverse aspects of sustainability in a variety of ways: academically, organically, and experientially. Come together with students of different backgrounds to explore your interest in and commitment to sustainable living.



go.illinois.edu/sllc

Each year, an energetic group of returning Sustainability Living-Learning Community (LLC) students plans an incredible two-day orientation program for all new Sustainability LLC residents (both new to the university and returning students who are new to the LLC). This gives residents the opportunity to move in two days early, get settled, make new friends, and participate in a variety of fun activities before campus-wide orientation begins.



Stay up to date on sustainability events, programs, and initiatives around campus by signing up for iSEE's e-newsletter!

go.illinois.edu/enewsletter

STUDENT ORIENTED

CAMPUS PROGRAMS, CONTINUED

CAMPUS SURPLUS

Units wishing to dispose of State of Illinois property must contact Surplus to facilitate the proper disposal method. Equipment still in good, working condition is stored at the campus warehouse at Orchard Downs and can be redistributed to staff, faculty, and graduate students at no cost, other than transportation. Visits to Surplus are by appointment only.



go.illinois.edu/surplus

DUMP & RUN®

Each May, thousands of students move out of the residence halls for the summer. Many students have items in good condition they no longer want. Dump & Run was initiated to collect and divert these goods away from the landfill.



go.illinois.edu/dumpandrun

Facilities and Services partners with nonprofits who take the donations and sell back to the community. The program encourages donation habits within the student population and strengthens “town and gown” relations within Champaign-Urbana.

CERTIFIED GREEN CHAPTERS, EVENTS, AND OFFICES

CHAPTERS: The Certified Green Chapter Program aspires to encourage Greek chapters to commit to sustainability.



go.illinois.edu/chapter

EVENTS: The Certified Green Event Program aims to encourage all entities to commit to more environmentally conscious choices when planning events.



go.illinois.edu/greenevent

OFFICES: The Certified Green Office Program is designed to identify simple, inexpensive actions you can take in your workspace.



go.illinois.edu/greenoffices



HYDRATION STATION LOCATIONS

Water is the healthiest drink on the planet—and it is freely available at the university! By carrying refillable bottles and using the nearly 700 hydration stations conveniently located across campus, you can stay healthy while saving yourself money. All Illini athletic events allow fans to enter with an empty refillable bottle.



go.illinois.edu/watermap

INTERNATIONAL LABORATORY FREEZER CHALLENGE

The Freezer Challenge is focused on engaging, educating, and motivating researchers, faculty, staff, and students to promote the best lab-management sample-storage practices and leadership in environmental stewardship.



go.illinois.edu/freezer



SUSTAINABLE STUDENT FARM

The Sustainable Student Farm grows 40 to 50 vegetable and fruit crops on six acres in Urbana. Student workers and volunteers plant, cultivate, and harvest produce using low-input and organic practices. The majority of the produce goes to the dining halls on campus or is sold at a stand on the Quad and through an online store. Contact illinois-ssf@illinois.edu for a tour of the farm.



go.illinois.edu/ssf

ENVIRONMENTAL LEADERSHIP PROGRAM

The Environmental Leadership Program (ELP), launched during the 2021–2022 academic year, prepares undergraduates for leadership roles in sustainability fields. Through real-world experience with legislators, nonprofits, and business leaders, this program trains students how to effectively advocate for policies that improve community sustainability and develops their communication and problem-solving skills around environmental issues. The ELP prepares students for careers in both the public and private sectors and offers valuable networking opportunities with leaders in the field.



go.illinois.edu/elp

ZERO WASTE ATHLETICS

During the academic year, zero waste events are held across various athletic venues. The purpose is to raise awareness for waste reduction and promote recycling education within the athletics community.



go.illinois.edu/zwathletics

SUSTAINABILITY, ENERGY, AND ENVIRONMENT FELLOWS PROGRAM

The purpose of the Sustainability, Energy, and Environment Fellows Program (SEE FP) is to promote systems-level thinking about energy and sustainability and foster the development of an integrated view of the economy, society, and the environment. It is a campus-wide undergraduate minor that prepares students for careers in the corporate sector, nonprofit organizations, government agencies, and environmental advocacy groups.



go.illinois.edu/seefp

The SEE FP is offered in partnership with six academic units—the Department of Agricultural and Consumer Economics; the Department of Civil and Environmental Engineering; the School of Integrative Biology; the Department of Natural Resources and Environmental Sciences; the School of Earth, Society, and Environment; and the Department of Urban and Regional Planning.



Student-Led Committees

Students are the lifeblood of any campus community. With them they bring their own life experiences, cultures, and a sense of curiosity. At Illinois, there are three distinct student-led committees concerning sustainability, and a fourth is centered around campus event planning.

ILLINI UNION BOARD

The Illini Union Board (IU Board) is the campus event-planning board. Composed of eight different planning committees, the IU Board plans hundreds of events annually. The IU Board provides a fun opportunity to gain real-world experience for students interested in improving their organizational skills and professional training.



[go.illinois.edu/
iuboard](https://go.illinois.edu/iuboard)

ILLINOIS STUDENT COUNCIL: ENVIRONMENTAL SUSTAINABILITY COMMITTEE

On behalf of the student body, Illinois Student Council advocates for the betterment of the campus community with integrity, transparency, and Illini Pride. The Environmental Sustainability Committee advocates for environmental causes and promotes the development of sustainable practices. This committee also ensures the Illinois Student Council operates environmentally and sustainably.



isc.illinois.edu

STUDENT SUSTAINABILITY COMMITTEE

The Illinois Green Fund is currently the largest university sustainability funding pool in North America and is stewarded by the SSC, a group of undergraduate and graduate students dedicated to building a more sustainable campus. With the partnership of a team of staff and faculty members, voting members of the SSC allocate \$1.5 million annually toward the development and seed funding of projects that have a social and environmental impact on the university community.



[go.illinois.edu/
igf](https://go.illinois.edu/igf)

STUDENT SUSTAINABILITY LEADERSHIP COUNCIL

The Student Sustainability Leadership Council (SSLC) is the student-led group facilitating communications between campus sustainability and the student body, as well as relationships among environmentalist student groups on campus. Made up of the leaders and representatives from numerous registered student organizations (RSOs), SSLC fosters a deeper connection between campus leadership and environmental student leaders.



[go.illinois.edu/
sslc](https://go.illinois.edu/sslc)

Cultural & Resource Centers

Cultural and resource centers aid in students' academic success, sense of inclusion, and feeling of belonging on campus. Many of the centers host their own unique programs to build community and champion sustainability.

ASIAN AMERICAN CULTURAL CENTER

The Asian American Cultural Center (AACC) provides the university community with space to gather and share the diverse and rich cultures that are a part of the Asian American and Asian international student experience.



aacc.illinois.edu

Food for Thought

The Food for Thought lunch-on-us series is a weekly noontime discussion focused on topics relevant to the Asian American community. The AACC is committed to decreasing its disposable water bottle consumption during these programs through the implementation of drink dispensers with reusable or compostable drinkware.



BRUCE D. NESBITT AFRICAN AMERICAN CULTURAL CENTER

The mission of the Bruce D. Nesbitt African American Cultural Center (BNAACC) is to provide a network of programs and support services promoting the individual, social, cultural, and academic well-being of Illinois' African American students.



bnaacc.illinois.edu

BNAACC develops sustainable initiatives that examine the Black experience in the United States and throughout the African Diaspora via critical dialogue, heritage exploration, and the performing arts. Furthermore, they challenge all Illinois students to critically assess their role as global citizens and to consciously advocate for a respectful campus environment and community.

ILLINOIS LEADERSHIP® CENTER

Leadership Labs

Leadership Labs are multi-hour interactive experiences focusing on a particular aspect of leadership practice. Leadership Labs are offered in fully in-person, online, or hybrid formats.



go.illinois.edu/ILCWebsite

Weekly Workshop Series

On Wednesday and Thursdays, the Illinois Leadership Center offers a variety of engaging, experiential 60-minute workshops based on the latest leadership research and designed to support you in your academic classes.

Leadership Certificate

The Leadership Certificate Program is a leadership development program that allows you to create a customized experience to develop your leadership competencies through leadership trainings, co-curricular involvement, and self-reflection.

CULTURAL & RESOURCE CENTERS, CONTINUED

INTERNATIONAL EDUCATION

Global Leaders Orange and Blue Engagement (GLOBE)



go.illinois.edu/internationaledu

The goal of GLOBE is to provide opportunities for domestic and international students to enhance intercultural communication skills, leadership experience, and lifelong friendships, as well as “help all students develop global awareness and cultural competency,” as outlined in the strategic plan of the University of Illinois.

Global Engagement Lounge

Meet international and domestic students, representatives from campus units, academic advisors, and members from RSOs to enjoy interactive activities and transform your Illinois experience.

LA CASA CULTURAL LATINA



lacasa.illinois.edu

Since its founding in 1974, La Casa Cultural Latina has demonstrated an unwavering commitment to Latina/o students and the campus community, as well as local and global communities. La Casa reflects the diversity of Latina/o cultures and exemplifies el éxito Latino that shapes the Americas in the contemporary world.

The mission of La Casa Cultural Latina is to promote a welcoming and dynamic atmosphere through the development of educational, cultural, sociopolitical, and social programs that lead to greater recruitment, retention, advancement, and empowerment of Latina/o students. La Casa engages current and future leaders through mentorship, civic engagement, and the promotion of social advocacy.

NATIVE AMERICAN HOUSE



nah.illinois.edu

Since its founding in 2002, the Native American House (NAH) mission has been to create an empowering university context for Native students by promoting cultural, familial, and place-based relationships as unique factors that facilitate Native student success. In keeping with its historical legacy, the NAH strives to positively impact the educational and development outcomes of Native students by fostering a sense of belonging, nurturing well-being, and encouraging retention through engagement, academic support, and advocacy. The NAH welcomes all, while centering the voices and lived experiences of Indigenous Peoples.

NEW STUDENT & FAMILY EXPERIENCES



newstudent.illinois.edu

New Student & Family Experiences is here to help students and their families as they begin their journey at Illinois. Their goal is to get you excited about your Illinois experience and connected to all the people, places, resources, and opportunities available to new students and their families.

New Student & Family Experiences is dedicated to finding innovative ways to promote sustainability in their Welcome Week programming, including a new sustainable water initiative at the Welcome Celebration that replaces individual, single-use plastic bottles with mobile water sources and aluminum bottles.



OFFICE OF CIVIC LIFE

Volunteer Matching and Project Recruitment

The Office of Civic Life (OCL) matches students' volunteer and service interests with community partner needs through the Volunteer Interest Form. Students meet with staff to discuss volunteer goals and identify various local, national, and international opportunities.



civiclfe.illinois.edu

Illini Vote

Illini Vote focuses on nonpartisan student voter engagement efforts. From programs and workshops facilitated by the Illini Vote Ambassadors, their goal is to increase civic participation by supporting students' ability to Register-Research-Vote. Illinois has been recognized as a "Most Engaged Campus" for college student voting.



civiclfe.illinois.edu/illinivote

Legacy Learning and Service Scholarship Program

Through a partnership between OCL and the Office of Financial Aid, select students with financial need are awarded this scholarship each academic year. Student cohorts complete up to 50 service hours with community organizations to mitigate social issues and address community needs. Since 2006, students at Illinois have supported the service engagement of Legacy Scholars through a student fee.

SALAAM MIDDLE EAST & NORTH AFRICA CULTURAL CENTER

The mission and vision of the Salaam Middle East & North Africa (MENA) Cultural Center are to provide a home for a border-fluid MENA community and to inspire holistic student success, inclusion, and belonging.



salaam.illinois.edu

They foster the development of critical, intercultural citizens and global leaders who are better equipped to read and engage a complex and nuanced world.

UNIVERSITY YMCA

Dump & Run®

This summer program, run by the YMCA, keeps over 30 tons of used, quality goods out of Champaign-Urbana's dumpsters each year. Collections begin in early August with a Big Sale during campus move-in weekend at the U. of I. Stock Pavilion.



go.illinois.edu/dnr

Friday Forum + Conversation Café

A weekly forum to learn about and discuss pressing public concerns while enjoying free lunch from the Y Eatery, Friday Forum has been a continually running program at the University YMCA since 1927. It is held at Latzer Hall at noon during the semester.



go.illinois.edu/cafe

Affiliated RSOs

The University Y is home to 14 RSOs, all dedicated to the mission of social justice, environmental protection, interfaith cooperation, and global engagement. Current environmental organizations include Grow2Give, vermiCULTure, and Project 4 Less.

WOMEN'S RESOURCES CENTER

Intersectional Environmental Justice Summit

The summit offers a series of public programs designed to connect social justice, environmental justice, and feminist theory. Lectures, workshops, and film screenings provide students with unique opportunities to further explore ecofeminist theory and praxis.



go.illinois.edu/womensresources



Sustainability-Focused RSOs

There are more than 800 RSOs on campus, and each has formed to fulfill a unique mission. Many of these RSOs have sustainability as a core value. All RSOs can be explored on the One Illinois website.



go.illinois.edu/campusgroups

AMERICAN NUCLEAR SOCIETY, UNIVERSITY OF ILLINOIS STUDENT SECTION

Illinois' student section of the American Nuclear Society (ANS) aims to provide opportunities to students interested in nuclear topics to further themselves professionally through the international ANS network of scientists, engineers, and other nuclear specialists.

BEEKEEPING CLUB

The Beekeeping Club serves to educate members on beekeeping methods, to foster environmental stewardship within members and the university, and to act as a social space for environmentally minded students.

CIRCULAR FASHION EXPO

Through exhibitions, events, and educational initiatives, Circular Fashion Expo strives to raise awareness about the environmental and social impact of fashion while fostering a community of like-minded individuals dedicated to creating positive change.

ECO ILLINI SUPERMILEAGE

The mission of Eco Illini Supermileage is to provide members opportunities to apply course content to real projects, develop technical and professional skills, and offer valuable experiences in engineering at the intersection of efficiency and sustainability, regardless of their major or desired career.

EMBRACE

Empowering Minorities and Building Representation Across Civil and Environmental Engineering (EMBRACE) serves to empower minorities and increase representation in Civil and Environmental Engineering at the U. of I. by encouraging diversity and inclusion, building a community, promoting academic excellence, and facilitating career development.

ENACTUS

Illinois Enactus is a social entrepreneurship organization at the university. As change makers, they are creating sustainable enterprises to address social and environmental issues in communities. The organization is made up of students from various background and majors, but with one unifying passion: to better the world through entrepreneurship.



ENGINEERS WITHOUT BORDERS

Engineers Without Borders USA at the U. of I. supports community-driven programs worldwide by collaborating with local partners to design and implement sustainable engineering projects, while creating transformative experiences and responsible leaders.

GEOCLUB

The purpose of Geoclub is to promote an environment of professional development, academic achievement, and social networking within the Department of Earth Sciences and Environmental Change.

ILLINI WILDLIFE AND CONSERVATION CLUB

The Illini Wildlife and Conservation Club is a perfect fit for any students who are interested in wildlife, conservation, the environment, or just spending time outdoors. The club is dedicated to giving back to the community and being stewards of the local environment.

ILLINOIS SOLAR DECATHALON

Illinois Solar Decathlon seeks to lead innovation in design and technology to advance toward an environmentally sustainable future. They connect the legacy of past Illinois competition projects to the development of future successful teams, aiming to elevate the standard of Solar Decathlon and ensure a true contribution to green building.

InSPIRE

The Institute for Scientific Progress, Innovation, Research, and Edu-Training (InSPIRE) is a sustainability engineering RSO dedicated to promoting a broader understanding of renewable energy to the public. They hope to inspire a new generation to continue pursuing and improving renewable energy.

MANRRS

The mission of Minorities in Agriculture, Natural Resources, and Related Sciences (MANRRS) is to promote academic and professional excellence in students of diverse backgrounds within the fields of agriculture, natural resources, and related sciences.

PROJECT 4 LESS

Project 4 Less is a student-led food recovery program whose goal is to reduce food waste in university dining halls while simultaneously reducing food insecurity in the surrounding community.

RED BISON ECOLOGICAL RESTORATION

Red Bison is dedicated to championing environmental justice and stewarding healthy ecosystems within and beyond the Urbana campus. They strive not only to restore and maintain the natural environment but also to confront systemic issues.



SUSTAINABILITY-FOCUSED RSOS, CONTINUED

STUDENTS FOR ENVIRONMENTAL CONCERNS

Students for Environmental Concerns is the oldest and largest environmental organization at the University of Illinois dedicated to environmental activism and justice. Their primary mission is to work to maintain the stability, integrity, and beauty of the natural world; promote and participate in the sustainable food revolution; and pursue clean energy on and off campus.



SUSTAINABLE SOLUTIONS

The mission of Sustainable Solutions is to challenge students to develop a stronger understanding of sustainability and, through an annual project, to learn to incorporate sustainable solutions into everyday problems that engineers may encounter.



THE ILLINOIS ALT PROTEIN PROJECT

The Alt Protein Project is inspiring the next generation of scientists and entrepreneurs to build healthy, sustainable, and just food systems through alternative protein research and innovation.

WOMEN IN NUCLEAR STUDENT CHAPTER AT THE UNIVERSITY OF ILLINOIS

The purpose of the Women in Nuclear Student Chapter is to provide students with opportunities to learn about nuclear science, participate in educational outreach programs, develop its members professionally, and to offer advocacy.



Sustainable Transportation

Champaign-Urbana's great local bus system, growing bicycle and pedestrian-friendly infrastructure, and nearby business districts with shopping, restaurants, and activities mean that traveling without a car is easy and convenient. The resources listed here help you explore public and active modes of transportation.

BIKE AT ILLINOIS

Bike at Illinois is your source for information and resources that help you have a safer, more comfortable, and more enjoyable biking experience at the University of Illinois.



bike.illinois.edu

PUBLIC AND ACCESSIBLE TRANSPORTATION

Mass Transit District

All Champaign-Urbana Mass Transit District (MTD) buses are ADA accessible and equipped with a lift and bike rack. MTD buses can get you to nearly every corner of Champaign, Urbana, and Savoy with your i-card.

Disability Resources and Educational Services (DRES)

The Urbana campus is one of the most accessible in the world. Individuals with temporary or permanent disabilities can qualify for transportation services through DRES.



go.illinois.edu/drestransport



UI Ride

UI Ride is an intercampus shuttle service connecting Urbana-Champaign and Chicago to provide an affordable, efficient, and convenient mode of transportation for the University of Illinois System faculty, staff, and students.



go.illinois.edu/UofIRide

SAFEWALKS & SAFERIDES

The Division of Public Safety employs Student Patrol Officers so you never have to walk alone at night. Call SafeWalks at 217-333-1216. SafeRides offers door-to-door rides between dusk and 6 a.m. Call MTD at 217-265-7433.



police.illinois.edu

RIDESHARE & CAR POOL

Zipcar

With a small membership fee, you can use a Zipcar by the hour or day. No need to worry about gas, insurance, or long-term parking.

F&S Car Pool

Managing more than 5,500 rentals a year, Transportation & Automotive Services provides fast and convenient full-service vehicle rental for faculty and staff.



go.illinois.edu/carpool

Toward Zero Waste

RETHINK, REDESIGN, REFUSE, REDUCE... RECYCLE

The Zero Waste International Alliance defines zero waste as, “the conservation of all resources by means of responsible production, consumption, reuse, and recovery of products, packaging, and materials without burning and with no discharges to land, water, or air that threaten the environment or human health.” The primary campus objective is to reduce landfilled waste.

UNIVERSITY WASTE STREAM PROCESS

1. Users on university property place a product in an indoor or outdoor waste receptacle.
2. Building service workers take color-coded bags to the outdoor dumpster.
3. The bags are transported by trucks back to the university’s Waste Transfer Station.
4. Recycling in blue- or clear-colored bags are manually sorted on a conveyor belt.



ZERO WASTE RESOURCES

F&S is charged with campus waste management via hauling, processing, and communications. The F&S web page hosts resources for individuals and units to engage in the waste management process:

- Recycling signage
- Bin requests
- Waste Transfer Station tour requests
- Recyclopedia: A guide to disposal
- 2014 and 2023 waste audit summaries
- Hydration station campus map
- Waste Transfer Station contact information



[go.illinois.edu/
zero-waste](https://go.illinois.edu/zero-waste)



[fs.illinois.edu/
recyclopedia](https://fs.illinois.edu/recyclopedia)

Illinois Recycling Guide



ILLINOIS RECYCLING GUIDE

CARDBOARD



ACCEPTED

- Corrugated cardboard (staples & tape are allowed)
- Pizza boxes must be predominantly free of any solid food residue and grease stains

NOT ACCEPTED

- Soiled, wet, or contaminated cardboard

PAPER



ACCEPTED

- Office paper
- Ream Wrappers
- Colored paper
- Notebook Paper
- Mail & Envelopes
- Books & Magazines
- File Folders
- Cardstock

NOT ACCEPTED

- Paper Towels
- Napkins
- Tissues
- Paper Plates
- Coffee Cups
- Soiled Paper

ALUMINUM CANS



ACCEPTED

- Aluminum Cans
- Aluminum Cups

NOT ACCEPTED

- Aluminum foil
- Foil pans and trays

PLASTIC



ACCEPTED

- Plastic #1 and #2: bottles, milk jugs, & laundry detergent containers

NOT ACCEPTED

- Glass
- Plastic #3 - #7: styrofoam, containers, clamshells, single-use utensils, grocery bags, food wrappers, chip bags

LANDFILL



ACCEPTED

- Food, glass, foil, plastic #3 - #7, soiled cardboard, tissues, paper plates, Coffee Cups, etc.



Facilities & Services

Questions? Email us at recycling@illinois.edu
fs.illinois.edu/recyclopeda/





Take a Tour

ABBOTT POWER PLANT

Originally constructed in 1940, Abbott Power Plant supplies 70 to 75 percent of the energy demand for the university. This cogeneration facility simultaneously produces both steam and electricity for campus, with an emphasis on safety, reliability, and environmental responsibility.



go.illinois.edu/abbottplant



GRIND2ENERGY

At each of the five dining halls on campus, all food waste is disposed of via Grind2Energy. The waste is transported to the Urbana-Champaign Sanitary District. From there, methane is captured and soil amendment is created. Contact dining@illinois.edu for a tour.



go.illinois.edu/grind2energy



POLLINATORIUM

The U. of I. Pollinatorium is the first free-standing science center in the nation devoted to flowering plants and their pollinators. Because so much depends on pollination, the Pollinatorium is dedicated to increasing awareness and appreciation of pollination as a remarkable ecological partnership and an essential ecosystem service.



go.illinois.edu/visitpollinatorium





RED OAK RAIN GARDEN

The Red Oak Rain Garden (ROrg) soaks up rainwater, enhances the campus and community aesthetic and educational experience, and promotes well-being for everyone who visits.



go.illinois.edu/rorgarden

As part of Illinois Extension, the RORG Team believes in providing excellence in educational programming and providing accessible programs that help people solve problems. The rain garden does both! The team creates service-learning opportunities for students and community volunteers and inspires visitors to find out how they can create healthier landscapes where they live.

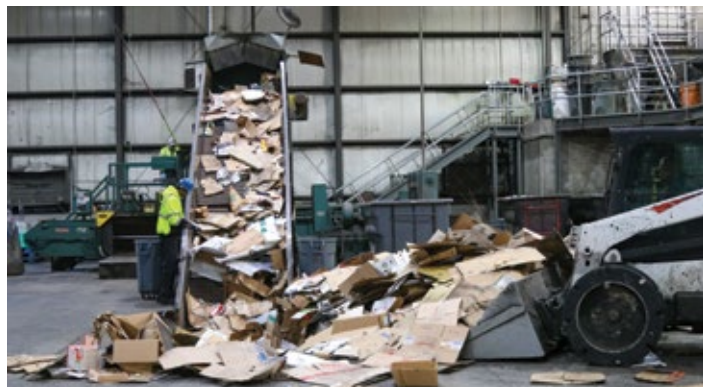


SOLAR FARM 2.0

Solar Farm 2.0 is a 54-acre, 12.32-megawatt utility-scale array energized in early 2021. This innovative project incorporates bifacial solar panels, uses a solar tracking system, and hosts pollinator-friendly plants to support the local ecosystem.



go.illinois.edu/visitsolarfarm



WASTE TRANSFER STATION

The Waste Transfer Station (WTS) is at the center of campus waste management and recycling activities. The station supports the overall campus goal to reduce the amount of material entering the waste stream. All nonregulated, municipal solid waste produced at university-affiliated buildings passes through the WTS.



go.illinois.edu/tourwts



The facility operates daily recycling routes in addition to its regular trash routes. As recyclable material arrives at the WTS, it is manually sorted. The trash is compacted and shipped to the landfill at a cost to the university. Recyclables are compressed into large bales and sold to a recycling mill.

Sixteen Sustainable Steps

1 GET RECYCLING BINS

Have a separate bin in your house, apartment, or dorm for recycling and research what can be recycled at the university and beyond.

2 GREEN YOUR COFFEE

Use a reusable coffee pod and add your own coffee grounds (we recommend looking for bulk buys). Alternatively, learn how to make French press or pour-over coffee.

3 TRY OUT SLOW FASHION

Try to maximize use of what you have, learn to sew a few simple stitches, and use thrift stores or clothing swaps instead of fast fashion brands when possible.

4 CONSERVE WATER

Turn off the water while brushing teeth or washing hands. Find toilet paper wrapped in paper instead of plastic and buy soap in bulk! Take shorter showers and run full loads of laundry to reduce water consumption.

5 REFUSE PLASTIC

You can place produce loose into a reusable bag, and the produce will still be scanned at checkout! At restaurants, refuse straws and bring your own containers or bags for leftovers. For takeout, ask for no utensils.

6 EAT THE RAINBOW


Incorporate more plant-based, whole foods products into your diet.

7 BRING YOUR OWN

Use the Good2Go Carry-Out program as a sustainable way to take food on the go. Bring an empty reusable bottle to athletic events.

8 BUY LOW-FLOW APPLIANCES

From toilets to faucets, they can get the job done with less water.



Open windows instead of turning on AC; put on a sweatshirt instead of turning up the heat.

CONTROL THE TEMPERATURE

9

Learn where your products come from! Don't buy items that endanger wildlife. Instead, look for Fair Trade certified goods.

READ LABELS & BUY LOCAL

10

Open up your blinds for some natural lighting and turn off your lamps. Not only does this save electricity, but it gives you some great vitamin D!

USE NATURAL LIGHTING

11

Almost everything is online, so take advantage! You can find books, newspapers, and magazines for free or at a discounted cost.

READ ONLINE

12

Even when not turned on, things that are plugged in are using electricity. Unplug anything that you're not using; a surge-protected power strip is our suggestion for a simple transition!

UNPLUG

13

Instead of buying artificial flowers, grow your own! Gardening is a rewarding experience; there's nothing like watching a new leaf grow! Plants are decorative and act as natural air-fresheners.

GROW YOUR OWN

14

Use the landfill as a last resort! Utilize thrift stores, online marketplaces, and resale shops for your home goods, office, and clothing needs.

UPCYCLE

15

Tell your friends about this Green Guide, and let us know if you have suggestions for the next update. Feedback is welcome at recycling@illinois.edu.

SPREAD THE WORD

16



Facilities & Services