



Facilities & Services

TRANSPORTATION CLOSURE FORM

(Streets, Sidewalks, Bike Paths & Bike Parking)

Date Submitted: 04/15/25

Street(s), Sidewalks, Bike Path or Parking to be Closed: Oak Street

Intersecting Streets which are affected or define limits of closure: Oak Street between Gregory and Armory

Reason for Closure: Excavating equipment to repair a water leak on underground valve from the North Cooling Tower to the edge of Oak Street. The street is already closed from the roofing work, and we need to extend the closure to make it safe for the excavators and valve repair team for staging of equipment. The sidewalk will be opened back up.

Project On-Site Contact Person: Stacy Smith

Phone Number: 217-714-5566

U of I Project Manager (PM): N/A

U of I PM Phone Number: N/A

Date of Closure: March 17, 2025

Expected Time of Closure: 6:00am

Date of Re-opening: May 9, 2025

Expected Time of Re-opening: 5:00pm

Work Order No. (if used):

CDB Contract No.: N/A

Is Traffic re-routing necessary? No

If so, who should be involved?

Will Pedestrian/bicycle traffic be affected? Yes

If so, will the sidewalk be closed? No

Will ADA audible/visual warnings and barriers be provided? No

Will pedestrian traffic be routed safely?

Are additional safety precautions needed? No

Please provide a diagram noting signage, re-routing, safety features, etc. with related explanations. **Diagram required.**

Yes **No**



Is barricading required? If so, indicate the barricade locations on the diagram.



Will Facility & Services staff place the barricades?

If the barricades will be placed by others, give the name of person responsible and the telephone number:



Will police be necessary to direct the traffic? If so, name jurisdiction times, dates and location of each officer needed:



Will this street closure affect University of Illinois parking meters on the street or in the parking lots in this area? If so, you **MUST** contact the Parking Department at 333-3530 as there may be a fee assessed.



Will MTD, DRES or other bus route re-locations be necessary? If so, coordinate with affected agency.

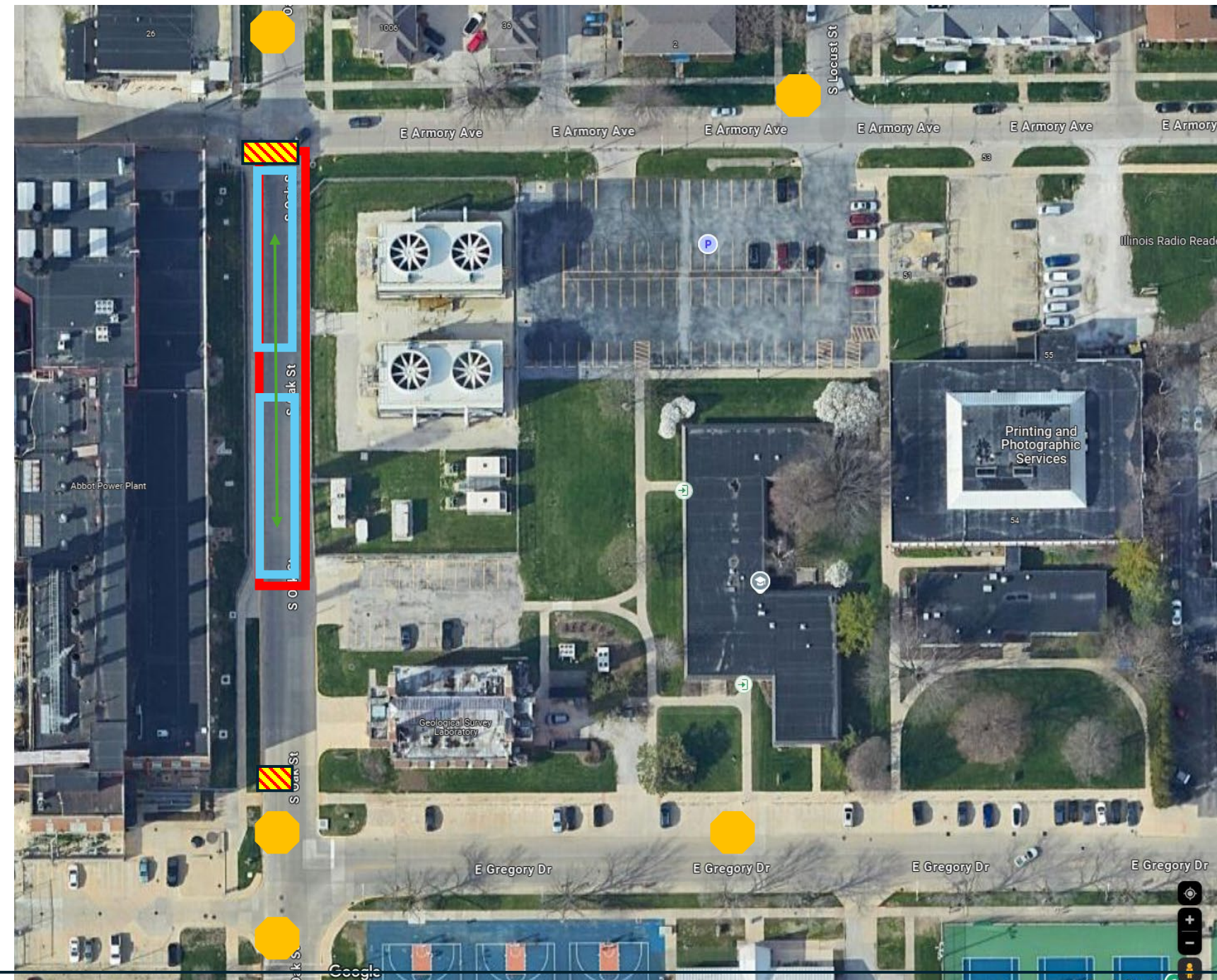
Record name and date of discussion with agency representative:



Will deliveries be permitted? **If so, how will access be controlled?** Deliveries to Abbott Power Plant will need to use the North Gate Entrance off of Armory.

Date approved: 4/16/2025 Approved By: Sarthak Prasad on behalf of Stacey DeLorenzo

Transportation Systems Manager (TSM): Stacey DeLorenzo · Phone: (217) 300-1750 · fandscampustdm@illinois.edu



Road Closed



Sign – Road closed ahead



Type III Barricade – Road
Closed to Thru Traffic



Excavator/Dump Truck
Staging



Dump trucks will move
back and forth for staging.