



TRANSPORTATION CLOSURE FORM

(Streets, Sidewalks, Bike Paths & Bike Parking)

Date Submitted: 8/7/2025

Street(s), Sidewalks, Bike Path or Parking to be Closed: Parking lot between Talbot Hall and Campus Instructional Building

Intersecting Streets which are affected or define limits of closure: N/A

Reason for Closure: Crane pick to set AHU on northwest wing of Talbot

Project On-Site Contact Person: Andy Frick
U of I Project Manager (PM): Rick Gallivan

Phone Number: 217-202-3035
U of I PM Phone Number: 217-202-5998

Date of Closure: 8/15/2025

Expected Time of Closure: 7:00 AM

Date of Re-opening: 8/15/2025

Expected Time of Re-opening: 12:00PM

Work Order No. (if used): Click or tap here to enter text.

CDB Contract No.: Click or tap here to enter text.

Is Traffic re-routing necessary? Yes

If so, who should be involved? BEC/Custom Crane

Will Pedestrian/bicycle traffic be affected? Yes

If so, will the sidewalk be closed? Yes

Will ADA audible/visual warnings and barriers be provided? No

Will pedestrian traffic be routed safely? Yes

Are additional safety precautions needed? Choose an item.

Please provide a diagram noting signage, re-routing, safety features, etc. with related explanations. **Diagram required.**

Yes No



Is barricading required? If so, indicate the barricade locations on the diagram. You must contact the F&S Service Office to submit a barricade service request.



Will Facility & Services staff place the barricades?

If the barricades will be placed by others, give the name of person responsible and the telephone number: **BEC/Custom Crane to place barricade**



Will police be necessary to direct the traffic? If so, name jurisdiction times, dates and location of each officer needed: Click or tap here to enter text.



Will this street closure affect University of Illinois parking meters on the street or in the parking lots in this area? If so, you **MUST** contact the Parking Department at 333-3530 as there may be a fee assessed.



Will MTD, DRES or other bus route re-locations be necessary? If so, coordinate with affected agency. Record name and date of discussion with agency representative: Click or tap here to enter text.



Will deliveries be permitted? If so, how will access be controlled? Loading docks to Talbot and Campus

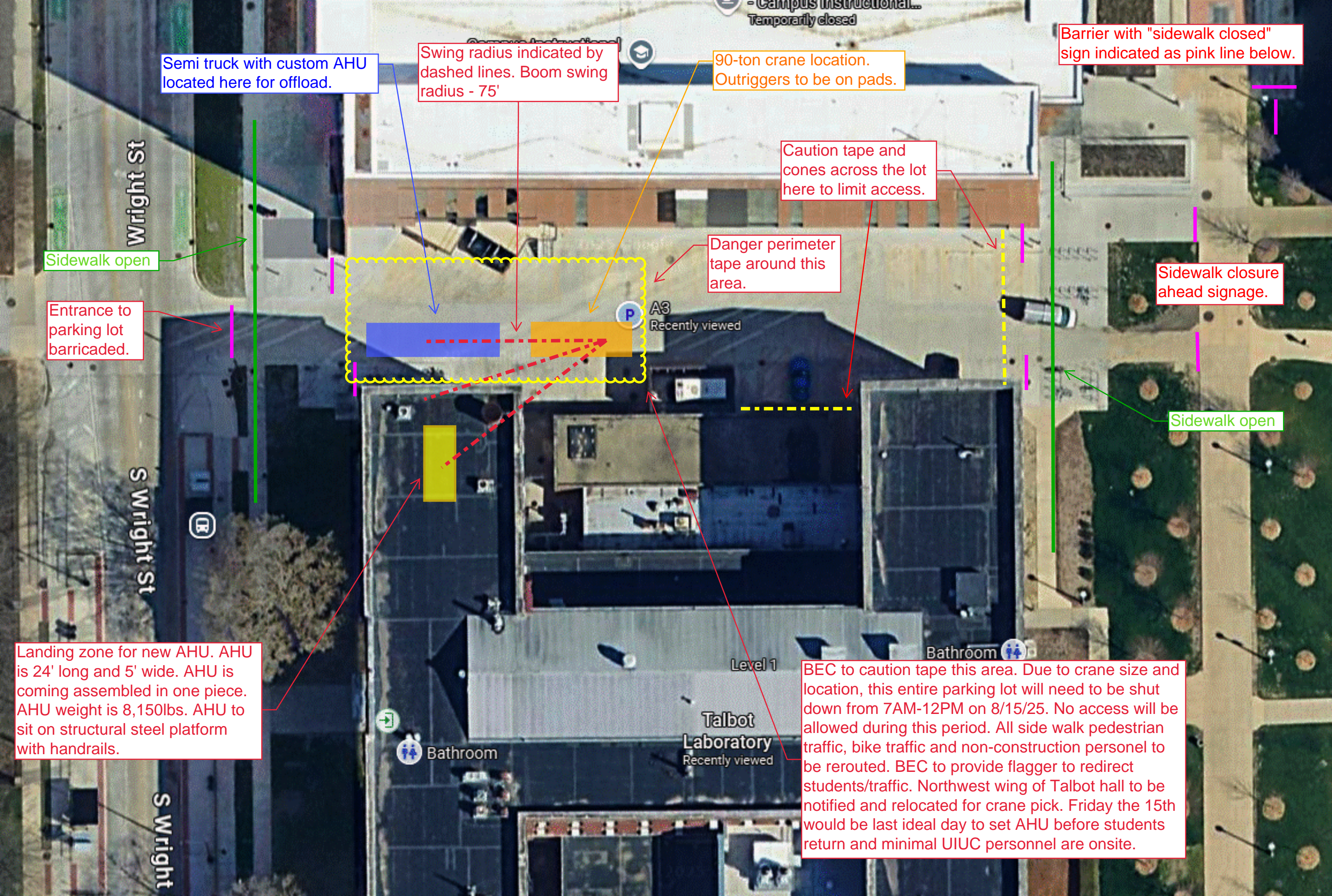
Instructional to be blocked due to location of crane.

8/12/2025

Sarthak Prasad on behalf of Stacey DeLorenzo

Date approved: Click or tap to enter a date. Approved By: Click or tap here to enter text.

Transportation Systems Manager (TSM): Stacey DeLorenzo · Phone: (217) 300-1750 · fandscampustdm@illinois.edu



Semi truck with custom AHU located here for offload.

Swing radius indicated by dashed lines. Boom swing radius - 75'

90-ton crane location. Outriggers to be on pads.

Barrier with "sidewalk closed" sign indicated as pink line below.

Caution tape and cones across the lot here to limit access.

Danger perimeter tape around this area.

Sidewalk closure ahead signage.

Sidewalk open

Entrance to parking lot barricaded.

Sidewalk open

Landing zone for new AHU. AHU is 24' long and 5' wide. AHU is coming assembled in one piece. AHU weight is 8,150lbs. AHU to sit on structural steel platform with handrails.

BEC to caution tape this area. Due to crane size and location, this entire parking lot will need to be shut down from 7AM-12PM on 8/15/25. No access will be allowed during this period. All side walk pedestrian traffic, bike traffic and non-construction personnel to be rerouted. BEC to provide flagger to redirect students/traffic. Northwest wing of Talbot hall to be notified and relocated for crane pick. Friday the 15th would be last ideal day to set AHU before students return and minimal UIUC personnel are onsite.