



Water Quality

— 2025 Report —



THIS REPORT



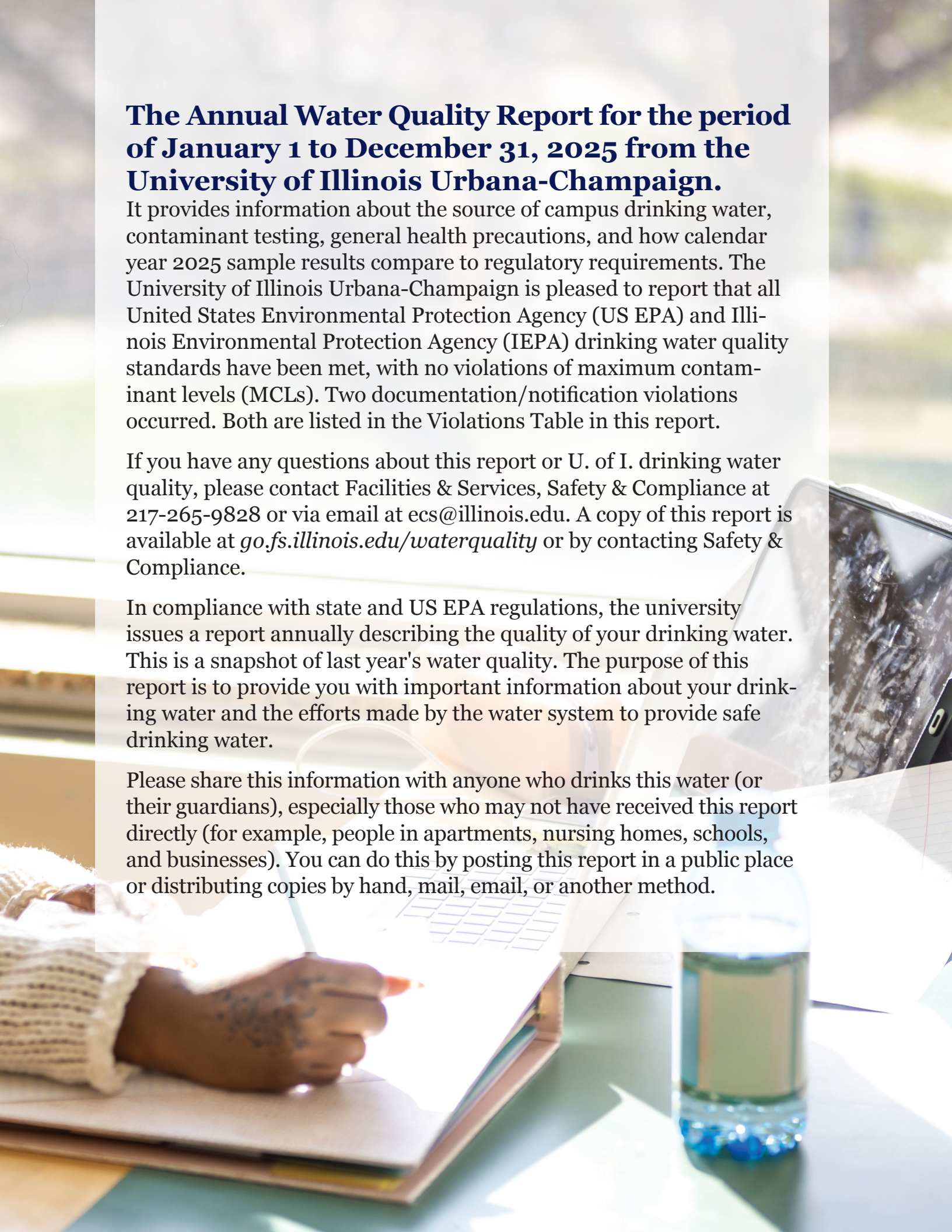
The Annual Water Quality Report for the period of January 1 to December 31, 2025 from the University of Illinois Urbana-Champaign.

It provides information about the source of campus drinking water, contaminant testing, general health precautions, and how calendar year 2025 sample results compare to regulatory requirements. The University of Illinois Urbana-Champaign is pleased to report that all United States Environmental Protection Agency (US EPA) and Illinois Environmental Protection Agency (IEPA) drinking water quality standards have been met, with no violations of maximum contaminant levels (MCLs). Two documentation/notification violations occurred. Both are listed in the Violations Table in this report.

If you have any questions about this report or U. of I. drinking water quality, please contact Facilities & Services, Safety & Compliance at 217-265-9828 or via email at ecs@illinois.edu. A copy of this report is available at go.fs.illinois.edu/waterquality or by contacting Safety & Compliance.

In compliance with state and US EPA regulations, the university issues a report annually describing the quality of your drinking water. This is a snapshot of last year's water quality. The purpose of this report is to provide you with important information about your drinking water and the efforts made by the water system to provide safe drinking water.

Please share this information with anyone who drinks this water (or their guardians), especially those who may not have received this report directly (for example, people in apartments, nursing homes, schools, and businesses). You can do this by posting this report in a public place or distributing copies by hand, mail, email, or another method.

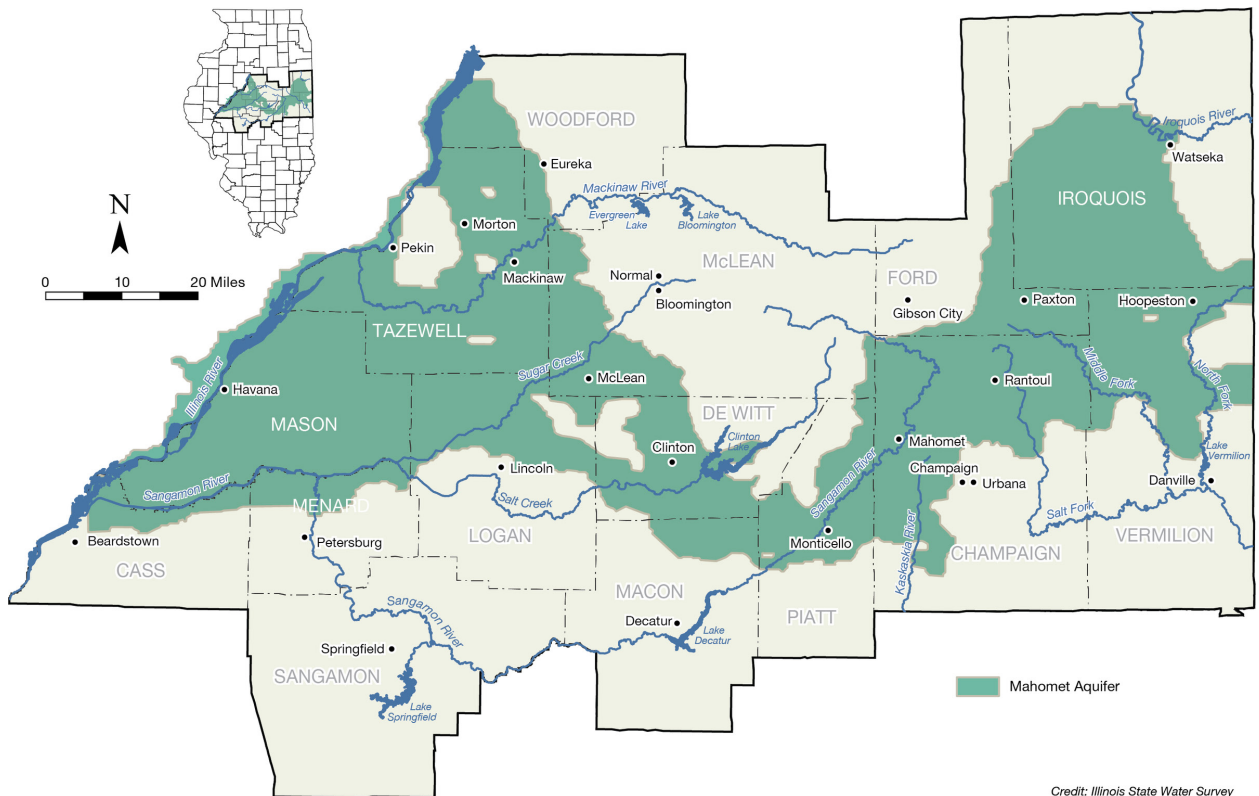


WHAT IS THE SOURCE OF UNIVERSITY DRINKING WATER?

The University of Illinois purchases drinking water from Illinois American Water (IAW), Champaign District. Water is delivered to campus via five metered locations, and this configuration is known as a consecutive water system. Therefore, the distribution system is considered a public water system. The campus system includes approximately 46 miles of water main. The university distributes this water to the vast majority of campus buildings, however some buildings are supplied directly from IAW. The following information about IAW, Champaign District water supply is from their 2025 Annual Water Quality Report and is available by calling 217-373-3273 or visiting their website at www.illinoisamerican.com.



The water source used by IAWCD is groundwater. Currently, 22¹ wells deliver water for treatment to two lime softening plants: the Mattis Avenue Plant, located in Champaign, and the Bradley Avenue Plant, located west of Champaign. The wells are primarily located in the Mahomet Sands Aquifer and supply water to both plants. The wells range from 208 to 366 feet in depth and are protected from surface contamination by geologic barriers in the aquifers. An aquifer is a porous underground formation (such as sand and gravel) that is saturated with water.



Credit: Illinois State Water Survey

1 22 wells is the number of wells listed by IEPA *Drinking Water Watch* (<https://water.epa.state.il.us/dww/index.jsp>), while 19 is the number listed by IAW Champaign (<https://www.amwater.com/ccr/champaign.pdf>).

Source Water Assessment

The Illinois Environmental Protection Agency (IEPA) has completed a source water assessment for the Champaign County system. In this report, IEPA indicates the wells supplying Champaign County are not geologically sensitive.

To determine IAW, Champaign District's susceptibility to groundwater contamination, a Well Site Survey Report from February 1991 and a source inventory conducted in 1999 by the Illinois Rural Water Association, in cooperation with the IEPA, were reviewed. Based on the information contained in these documents, nineteen potential sources of groundwater contamination are present that could pose a hazard to groundwater pumped by the IAW, Champaign District's community water supply wells.

These include three stores/sales, two printing generators/substations, three below ground fuel storages, a quarrying of material, two septic systems, and a well.

The IEPA has determined that IAW, Champaign District's wells #35, #40, #41, #42, #43, #45, #46, and #47 are susceptible to inorganic chemical (IOC), volatile organic chemical (VOC), and synthetic organic chemical (SOC) contamination. Wells #53, #54, #55, #56, #57, #58, #59, #60, #61, #62, #63, #64, #65, and #66 are not susceptible to inorganic chemical (IOC), volatile organic chemical (VOC), and synthetic organic chemical (SOC) contamination. This determination is based on a number of criteria, including monitoring conducted at the wells, monitoring conducted at the entry point to the distribution system, and the available hydrogeologic data for the wells.

To view a summary version of the completed Source Water Assessments, including Importance of Source Water; Susceptibility to Contamination Determination; and documentation/recommendation of Source Water Protection Efforts, you may access the IEPA website².



Protecting the Water You Drink

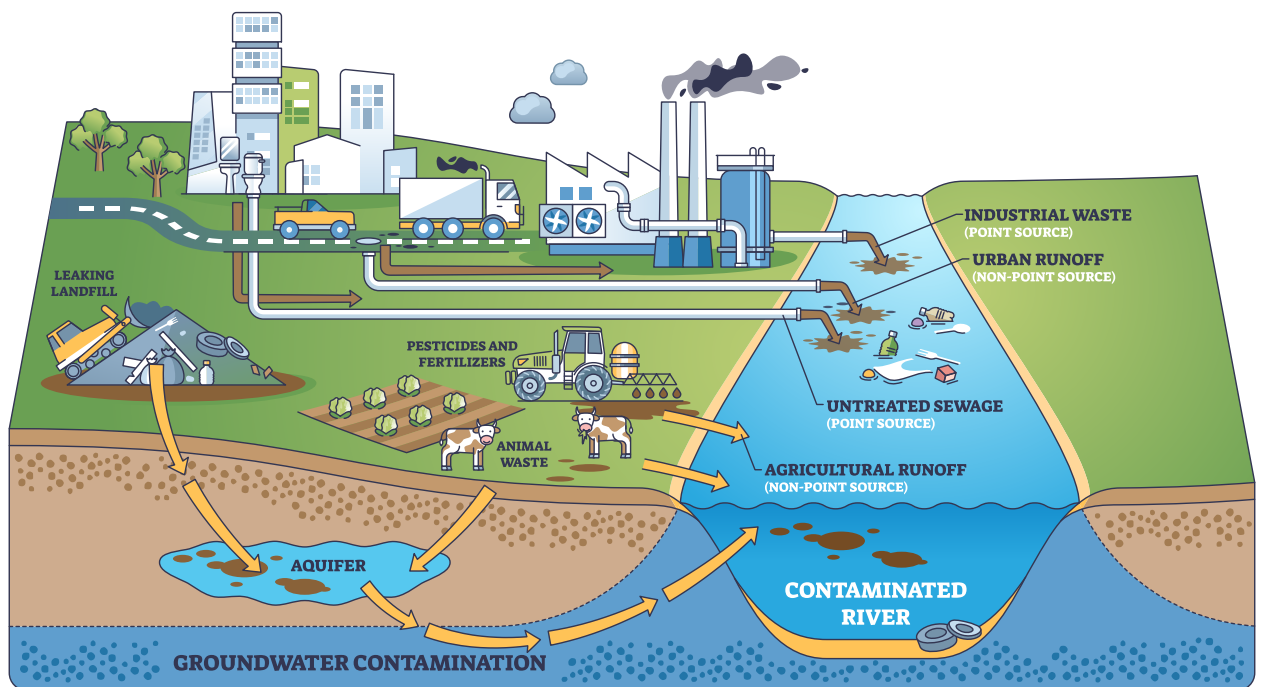
To ensure tap water is safe to drink, US EPA (United States Environmental Protection Agency) prescribes regulations that limit the amount of certain contaminants in water provided by public water systems. United States Food and Drug Administration (FDA) regulations establish limits for contaminants in bottled water, which must provide the same protection for public health as public water systems.

The university is required to test the water in its distribution system for coliform, lead, copper, total trihalo-methanes (TTHM), and haloacetic acids (HAA5). IEPA requires 15 samples per month to be analyzed for coliform. In 2025, normal operations of the U. of I. water distribution system resulted in approximately 16 samples per month for coliform. The most recent testing results for coliform, lead, copper, haloacetic acids, and TTHM are provided in the Data Summary table at the end of this report.

General Information About All Drinking Water

The sources of drinking water (both tap and bottled water) include rivers, lakes, streams, ponds, reservoirs, springs, and groundwater wells. As water travels over the surface of the land or through the ground, it dissolves naturally occurring minerals and, in some cases, radioactive material, and can pick up substances resulting from the presence of animals or human activity. Contaminants that may be present in source water include:

- Microbial Contaminants, such as viruses and bacteria, which may come from sewage treatment plants, septic systems, agricultural livestock operations and wildlife;
- Inorganic Contaminants, such as salts and metals, which may be naturally occurring or result from urban stormwater runoff, industrial or domestic wastewater discharges, oil and gas production, mining, or farming;
- Pesticides and Herbicides, which may come from a variety of sources, such as agriculture, urban stormwater runoff, and residential uses;
- Organic Chemical Contaminants, including synthetic and Volatile Organic Compounds, which are by-products of industrial processes and petroleum production, and may also come from gas stations, urban stormwater runoff and septic systems; and
- Radioactive Contaminants, which can be naturally-occurring or be the result of oil and gas production and mining activities.



Drinking water, including bottled water, may reasonably be expected to contain at least small amounts of some contaminants. The presence of contaminants does not necessarily indicate that water poses a health risk.

More information about contaminants and potential health effects can be obtained by calling the US EPA's Safe Drinking Water Hotline at 1-800-426-4791.

IAW's advanced water treatment processes are designed to reduce any such substances to levels well below any health concern.

All sources of drinking water contain some naturally occurring contaminants. At low levels,

these substances are generally not harmful in our drinking water. Removing all contaminants would be extremely expensive and, in most cases, would not provide increased protection of public health. A few naturally occurring minerals may actually improve the taste of drinking water and have nutritional value at low levels.

Some people may be more vulnerable to contaminants in drinking water than the general population. Immuno-compromised persons, such as persons with cancer undergoing chemotherapy, persons who have undergone organ transplants, people with HIV/AIDS or other immune system disorders, some elderly, and infants can be particularly at risk from infections. These people should seek advice about drinking water from their health care providers.

US EPA and Centers for Disease Control and Prevention (CDC) guidelines on appropriate means to lessen the risk of infection by cryptosporidium and other microbial contaminants are available from the US EPA Safe Drinking Water Hotline at 1-800-426-4791.

PFAS

Per- and polyfluoroalkyl substances (PFAS) are manufactured chemicals used in many household products including nonstick cookware (e.g., Teflon), stain repellents (e.g., Scotchgard), and waterproofing (e.g., GORE-TEX). They are also used in industrial applications such as in firefighting foams and electronics production. There are thousands of PFAS chemicals, and they persist in the environment. Two well-known PFAS chemicals are perfluorooctanoic acid (PFOA) and perfluorooctane sulfonic acid (PFOS). These were phased out of production in the United States and replaced by hexafluoropropylene oxide-dimer acid (commonly known as GenX), perfluoro butane sulfonic acid (PFBS) and others.

IAW has performed sampling to better understand occurrence of certain PFAS in drinking water sources. This sampling allows IAW to be better prepared as US EPA has finalized drinking water standards for six PFAS chemicals. For more information on the PFAS drinking water standards, please visit the EPA site³. The science and regulation of PFAS and other contaminants is always evolving. PFAS contamination is one of the most rapidly changing areas in the drinking water field.

Additionally, in 2024 and 2025, U. of I. tested campus drinking water for 29 PFAS chemicals through our participation in the US EPA Unregulated Contaminant Monitoring Rule program, or UCMR. Through the UCMR program, water systems collect data on a group of contaminants that are currently not regulated in drinking water at the federal level. U.S. EPA uses this information when deciding if it needs to create new drinking water limits. Testing results for all 29 PFAS chemicals were below detection levels in October 2024 and April 2025. Testing results are available for review on the F&S Water Quality page⁴.

IL EPA established Health Advisory Levels for several PFAS analytes. For more information about PFAS health advisories check their website⁵.

Coliforms

Coliforms are bacteria that are naturally present in the environment and are used as an indicator that other, potentially harmful, waterborne pathogens may be present or that a potential pathway exists through which contamination may enter the drinking water distribution system. We found coliforms which indicates the need to look for potential problems in water treatment or distribution. When this occurs, we are required to conduct assessments to identify problems and to correct any problems that were found during the assessment.

During the past year, one Tier 1 Treatment Technique was triggered, therefore we were required to conduct one Level 1 assessment. One Level 1 assessment was completed. In addition, we were required to complete line

3 <https://www.epa.gov/sdwa/and-polyfluoroalkylsubstances-pfas>

4 F&S Water Quality page: <https://fs.illinois.edu/water-quality/>

5 <https://epa.illinois.gov/topics/water-quality/pfas/pfashealthadvisory.html>

flushing. This line flushing was completed. No other corrective actions were required.

During the past year, one Tier 2 Treatment Technique was triggered, therefore we were required to conduct one Level 2 assessment. One Level 2 assessment was completed. In addition, we were required to complete line flushing. This line flushing was completed. No other corrective actions were required.

Lead

If present, elevated levels of lead can cause serious health problems, especially for pregnant women and young children. Lead in drinking water is primarily from materials and components associated with service lines and home plumbing.

The University of Illinois Urbana-Champaign is responsible for providing high quality drinking water and removing lead pipes, but cannot control the variety of materials used in plumbing components in your home. You share the responsibility for protecting yourself and your family from the lead in your plumbing. You can take responsibility by identifying and removing lead materials within your home plumbing and taking steps to reduce your family's risk. Before drinking tap water, flush your pipes for several minutes by running your tap, taking a shower, doing laundry or a load of dishes. You can also use a filter certified by an American National Standard Institute accredited certifier to reduce lead in drinking water.

The U. of I. has developed a service line inventory of the water service lines on campus. There are no known lead service lines or galvanized lines requiring replacement. There are a small number of service lines with unknown materials. We have been actively working to identify the materials in all of these unknown lines. Twelve previously unknown service lines have been positively identified as not being lead or galvanized requiring replacement in the last year. The university plans to identify as many of the remaining unknown service lines as possible within the next year. All public water suppliers in Illinois are required to identify all unknown service lines and replace any found to be lead or galvanized requiring replacement.⁶ To obtain a copy of the service line inventory, visit the F&S Water Quality Page⁷.

In accordance with IEPA requirements, a service line replacement plan has been developed. The U. of I. plan includes visually inspecting all unknown service lines within the next year. Any line found to be lead or galvanized requiring replacement will be replaced. To see the written Replacement Plan, please visit the F&S Water Quality Page.

Lead and copper sampling takes place every three years. To obtain a copy of the system's most recent lead tap sampling data, please visit the F&S Water Quality page. If you are concerned about lead in your water, you may wish to have your water tested. For university-owned facilities, you can call the Service Office and put in a request by calling 217-300-0340. Information on lead in drinking water, testing methods, and steps to take to minimize exposure is available by calling the US EPA Safe Drinking Water Hotline at 1-800-426-4791 or at www.epa.gov/safewater/lead.

Additionally, in 2025 the U. of I. was required to sample for lead in a portion of the schools and childcare facilities. All required schools and childcare facilities were tested in 2025. Please contact your school or childcare facility for further information about sampling results.

Arsenic

While your drinking water meets the US EPA's standard for arsenic, it does contain low levels of arsenic. The US EPA's standard balances the current understanding of arsenic's possible health effects against the costs of removing arsenic from drinking water. The US EPA continues to research the health effects of low levels of arsenic, which is a mineral known to cause cancer in humans at high concentrations and is linked to other health effects, such as skin damage and circulatory problems.

⁶ <https://ilga.gov/documents/legislation/ilcs/documents/041500050K17.12.htm>

⁷ F&S Water Quality page: <https://fs.illinois.edu/water-quality/>

VIOLATION SUMMARY

We are happy to announce no monitoring, maximum residual disinfectant level, or maximum contaminant level violations were recorded during 2025. There was one Consumer Confidence Rule violation and one Lead and Copper Rule violation.

Consumer Confidence Rule

The Consumer Confidence Rule requires community water systems to prepare and provide to their customers annual consumer confidence reports on the quality of the water delivered by the systems.

Violation Type: CCR Adequacy/Availability/Content

Violation Began: 07/01/2025

Violation End: 2025

Violation Explanation: We inadvertently omitted some of the requirements in last year's CCR. All of the requirements are included in this year's CCR, and will be included in all CCRs moving forward.

Lead and Copper Rule

The Lead and Copper Rule protects public health by minimizing lead and copper levels in drinking water, primarily by reducing water corrosivity. Lead and copper enter drinking water mainly from corrosion of lead and copper containing plumbing materials.

Violation Type: Notification, Known or Potential LSL

Violation Began: 07/02/2025

Violation End: 2025

Violation Explanation: We failed to certify to the IEPA that we delivered annual notifications and information to affected consumers with lead, galvanized requiring replacement, or lead status unknown service lines as required. These notifications have since been sent to the affected facilities, and the certification was sent to IEPA. The notifications and certification will be done by the required deadlines moving forward.

The required Tier 3 Public Notice related to this Non-Compliance Advisory violation is at the end of this document.

Infants and children who drink water containing lead in excess of the action level could experience delays in their physical or mental development. Children could show slight deficits in attention span and learning abilities. Adults who drink this water over many years could develop kidney problems or high blood pressure.

Additional Concerns

Due to positive coliform samples, one Tier 1 treatment technique and one Tier 2 treatment technique were triggered. These triggered Level 1 and Level 2 Assessments and water line flushing, but are not violations. We had zero positive E. coli tests.

WATER QUALITY DATA

Detected Contaminants

The U. of I. samples were collected by the university within the campus distribution system. IAW samples were collected within the parent water supply by Illinois American Water.

2025 Data Summary

The table below lists the contaminants that were detected in your water. The presence of contaminants does not necessarily indicate that the water poses a health risk. The data in this table represents a combination of the testing results on finished water from the distribution system and its parent supply, IAW, Champaign District. The university monitors water daily at five separate metered feeds. Additionally, the university monitors water at eight points within the campus distribution system. IAW monitors the parent water supply at points prior to entering the campus distribution system.

Coliform Bacteria								
Contaminant (Units)	Sampled by	Total Coliform MCLG	Total Coliform MCL	Highest # Positive	Fecal Coliform or E. Coli MCL	Total # of positive E. Coli or Fecal Coliform samples	Violation	Likely Source of Contamination
Coliform Bacteria	U. of I.	0	1 positive monthly sample	2	A routine sample and a repeat sample are total coliform positive, and one is also fecal coliform or E. coli positive	1	No	Naturally present in the environment.

Lead and Copper								
Contaminant (Units)	Sampled by	MCLG	AL	90th Percentile	Range	# Sites Exceeding AL	Violation	Typical Source of Contaminant
Copper (ppm)	U. of I.; 2023*	1.3	1.3	0.044	0 - 0.062	0	No	Erosion of natural deposits; Leaching from wood preservatives; Corrosion of household plumbing systems.
Lead (ppb)	U. of I.; 2023*	0	15	1	0 - 8.8	0	No	Corrosion of household plumbing systems; Erosion of natural deposits.

* The State of Illinois requires monitoring for certain contaminants less than once per year because the concentrations of these contaminants do not vary significantly from year to year, or the system is not considered vulnerable to this type of contamination. As such, some of the data, though representative, is more than one year old.

1 Chlorine and Chloramines are disinfecting agents added to control microbes that otherwise could cause waterborne diseases or other water quality concerns. Most water systems in Illinois are required by law to add either chlorine or chloramines. Levels well in excess of the MRDL could cause irritation of the eyes or nose in some people. The values reported reflect multiple locations in the service area. Data represents the highest monthly average of chlorine residuals measured throughout the U. of I. Distribution System.

Disinfectants & Disinfection Byproducts

Disinfectants & Disinfection By-Products	Sampled by	MCLG	MCL	Highest Level Detected	Range of Detections	Violation	Typical Source of Contaminant
Chlorine (ppm) ¹	U. of I.	MRDLG=4	MRDL=4	1.6	1.5 - 2	No	Water additive used to control microbes.
Haloacetic Acids (HAA5) (ppb)	U. of I.	No goal for the total	60	25	12.5 - 23.3	No	By-product of drinking water disinfection.
Total Trihalomethanes (TTHM) (ppb)	U. of I.	No goal for the total	80	67	28.2 - 79.3	No	By-product of drinking water disinfection.

NOTE: HAA5 and TTHM Compliance is based on the locational running annual average. The Highest Level Detected reflects the highest locational running annual average at any location and the Range Detected reflects the range of individual sample results for all monitoring locations from this year.

Inorganic Contaminants

Contaminant (Units)	Sampled by	MCLG	MCL	Highest Level Detected	Range of Detections	Violation	Typical Source of Contaminant
Arsenic (ppb)	IAW; 2024*	0	10	2	0 - 2	No	Erosion of natural deposits; runoff from orchards; runoff from glass and electronics production wastes.
Fluoride (ppm) ²	IAW; 2024*	4	4.0	0.66	0.61 - 0.66	No	Erosion of natural deposits; water additive that promotes strong teeth; discharge from fertilizer and aluminum factories.

State Regulated Contaminants

Contaminant (Units)	Sampled by	MCLG	MCL	Highest Level Detected	Range of Detections	Violation	Typical Source of Contaminant
Sodium (ppm) ³	IAW; 2024*	NA	NA	46.7	38.2 - 46.7	No	Erosion of natural deposits; used in water softener regeneration.

Unregulated Contaminants

Unregulated contaminants are those for which the EPA has not established drinking water standards. The purpose of unregulated contaminant monitoring is to assist the EPA in determining the occurrence of unregulated contaminants in drinking water and whether future regulation is necessary. Every five years, the EPA issues a new list of no more than 30 unregulated contaminants to be monitored. The MCL for these substances has not been established by either state or federal regulations, nor has mandatory health effects language. The table below provides information on the unregulated contaminants that were detected in the water system under the current round of monitoring. There were some unregulated contaminants that were not found in samples collected from this drinking water system.

Parameter	Sampled by	Average Result	Range Detected	Typical Source
Lithium (ppb)	U. of I.	ND	Only 1 sample taken	Naturally-occurring metal that may concentrate in brine waters; lithium salts are used as pharmaceuticals, used in electrochemical cells, batteries, and in organic syntheses.
PFAS	U. of I.	ND	Only 1 sample of each taken	Only 1 sample of each PFAS/PFOA analyte was taken in 2025. All 29 analytes were non-detect. All PFAS sampling results are available on the F&S Water Quality website: https://fs.illinois.edu/water-quality/

² Fluoride is added to the water supply to help promote strong teeth. The Illinois Department of Public Health recommends a fluoride level of 0.7 mg/L (ppm).

³ For healthy individuals the sodium intake from water is not important because a much greater intake of sodium takes place from salt in the diet. However, sodium levels above the recommended upper limit may be of concern to individuals on a sodium restricted diet.

DEFINITIONS

AL: Action Level. The concentration of contaminant that, when exceeded, triggers treatment or other required actions by the water supply.

ALG: Action Level Goal. The level of a contaminant in drinking water below which there is no known or expected risk to health. ALGs allow for a margin of safety.

Avg: Regulatory compliance with some MCLs are based on running annual averages of monthly samples.

Contaminant: Any physical, chemical, biological, or radiological substance or matter in the water.

Date Sampled: If the sample date appears, the IEPA requires monitoring for the contaminant less than once per year because the concentrations do not frequently change. If sample date does not appear, monitoring was conducted in 2024.

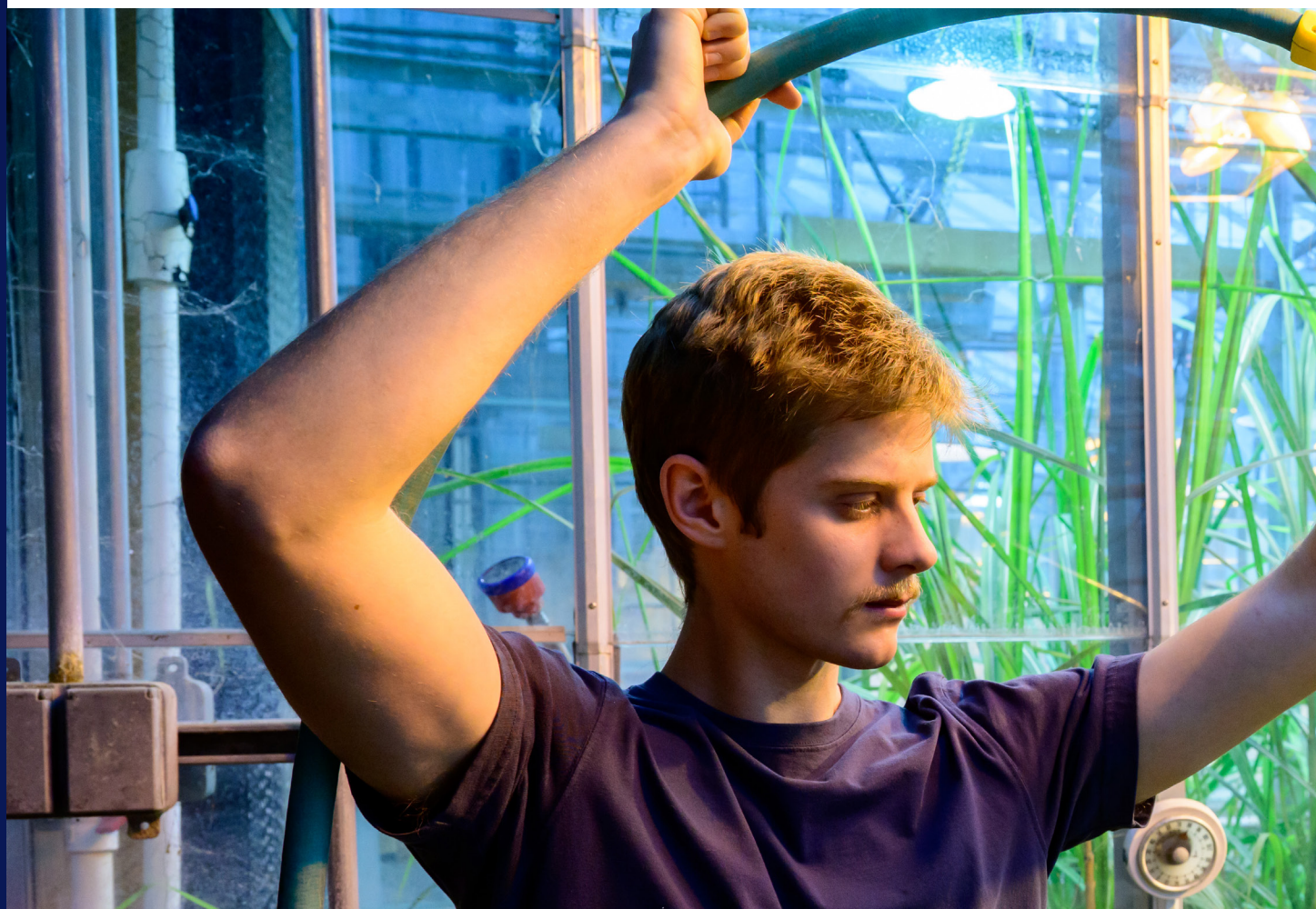
Herbicide: Any chemical(s), used to control undesirable vegetation.

Highest Level Detected: In most cases this column is the highest detected level unless compliance is calculated on a Running Annual Average or Locational Running Annual Average. If multiple entry points exist, the data from the entry point with the highest value is reported.

Level 1 Assessment: A Level 1 Assessment is a study of the water system to identify potential problems and determine (if possible) why total coliform bacteria have been found in our water system.

Level 2 Assessment: A Level 2 Assessment is a very detailed study of the water system to identify potential problems and determine (if possible) why an E. coli MCL violation has occurred and/or why total coliform bacteria have been found in our water system on multiple occasions.

Level Found: This column represents an average of sample result data collected during the sample period. In some cases, it may represent a single sample if only one sample was collected. For lead and copper, the level found equals the 90th percentile of all samples taken.



LSL: Lead service line.

MCL: Maximum Contaminant Level. The highest level of a contaminant that is allowed in drinking water. MCLs are set as close to the MCLGs as feasible, using the best available technology.

MCLG: Maximum Contaminant Level Goal. The level of contaminant in drinking water, below which there is no known or expected risk to health. MCLGs allow for a margin of safety.

MRDL: Maximum Residual Disinfectant Level. The highest level of a disinfectant allowed in drinking water. There is convincing evidence that a disinfectant is necessary for control of microbial contaminants.

MRDLG: Maximum Residual Disinfectant Level Goal. The level of a drinking water disinfectant below which there is no known or expected risk to health. MRDLGs do not reflect the benefits of the use of disinfectants to control microbial contaminants.

MREM: Millirems per year (a measure of radiation absorbed by the body).

NA: Not applicable.

ND: Not detectable at testing limits.

pCi/L: Picocuries per liter. A measurement of the natural rate of disintegration of radioactive contaminants in water.

Pesticide: Generally, any substance or mixture of substances intended for preventing, destroying, repelling, or mitigating any pest.

ppb: Parts per billion. Also micrograms per liter—or one ounce in 7,350,000 gallons of water.

ppm: Parts per million. Also milligrams per liter—or one ounce in 7,350 gallons of water.

Range of Detections: This column represents a range of individual sample results, from lowest to highest, that were collected during the sample period.

TT (Treatment Technique): A required process intended to reduce the level of a contaminant in drinking water.



IMPORTANT INFORMATION ABOUT YOUR DRINKING WATER

Reporting Requirements Not Met for University of Illinois Urbana-Champaign
Public Water System

Our water system violated a drinking water standard over the past year. Even though this was not an emergency, as our customers/users, you have a right to know what happened and what we did to correct the situation.

The University of Illinois Urbana-Champaign public water supply failed to submit the Service Line Notice Certification form to IEPA. A Service Line Notice was required to be sent to all customers with a Lead, Galvanized Requiring Replacement, or Unknown service line. Then a form certifying those letters had been sent was required to be submitted to IEPA. Failure to submit the Service Line Notice Certification form by July 1, 2025 has resulted in a reporting violation.

What should I do?

There is nothing you need to do at this time.

What happened? What is being done?

This report meets the corrective action requirements.

This is not an emergency. If it had been, you would have been notified immediately. The required Service Line notice was sent to all customers with unknown service line types on October 27, 2025. If you did not receive this notice, your service line has been positively identified and is neither lead nor galvanized requiring replacement.

The required certification form was mailed to IEPA on October 30, 2025 to bring the system back into compliance.

For more information, please contact Safety & Compliance at 217-265-9828 or via email at ecs@illinois.edu.

Infants and children who drink water containing lead in excess of the action level could experience delays in their physical or mental development. Children could show slight deficits in attention span and learning abilities.

Please share this information with all the other people who drink this water, especially those who may not have received this notice directly (for example, people in apartments, nursing homes, schools, and businesses). You can do this by posting this notice in a public place or distributing copies by hand or mail.

This notice is being sent to you by the University of Illinois Urbana-Champaign. Water System ID# IL0195500
Date Distributed: June 2026





Facilities & Services